



ILMATIETEEN LAITOS
METEOROLOGISKA INSTITUTET
FINNISH METEOROLOGICAL INSTITUTE



H2020 iSCAPE: Urban AQ control tools

Athanasios Votsis

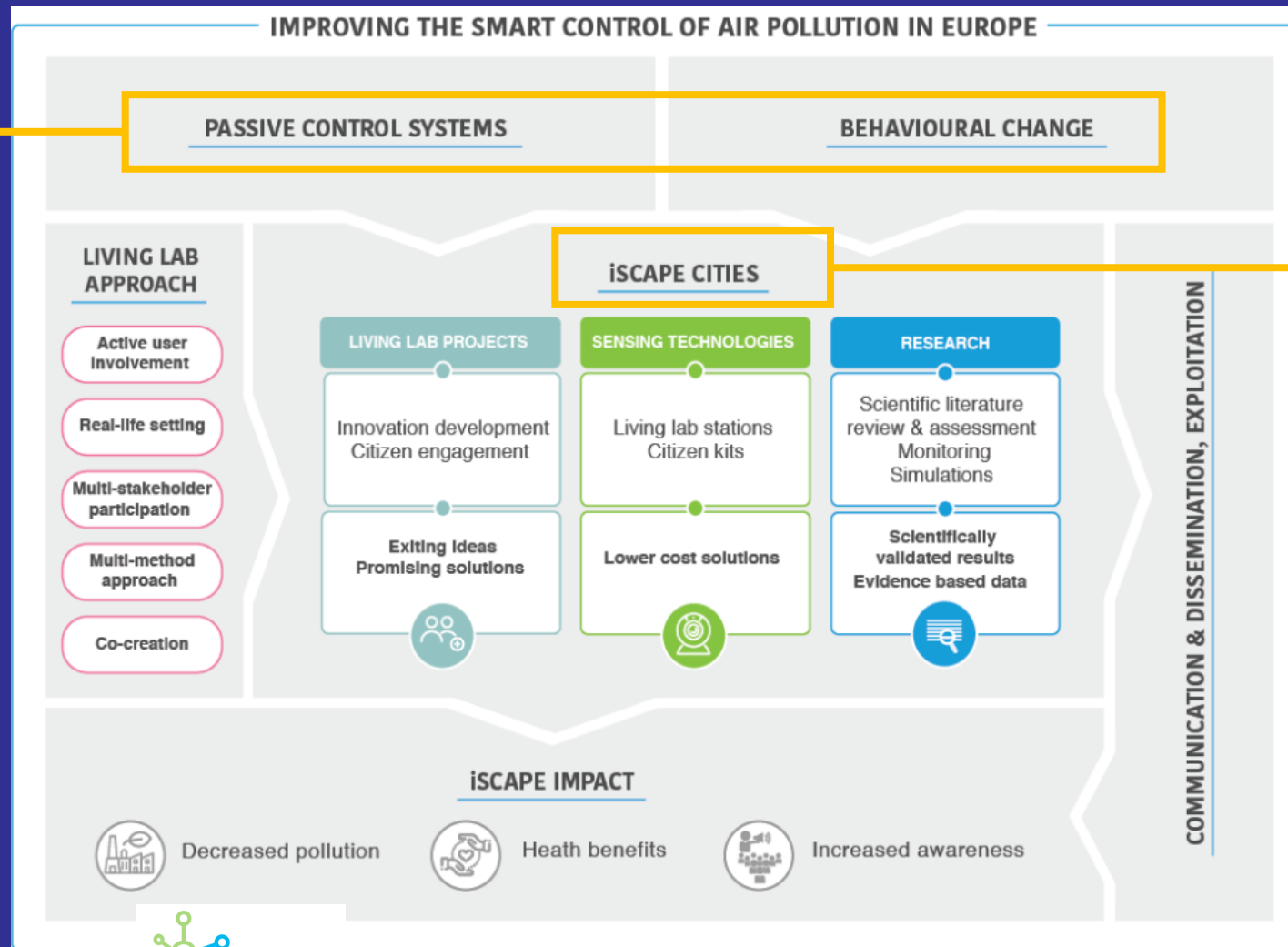
Riina Haavisto

Väinö Nurmi



iSCAPE: Improving the Smart Control of Air Pollution in Europe

- Green roofs
- Green land patches
- Travelling trees
- Mobility behaviour
- Low boundary walls
- Photocatalytic painting



- Bologna (IT)
- Lazaretto (IT)
- Bottrop (DE)
- Dublin (IE)
- Guildford (UK)
- Hasselt (BE)
- Vantaa (FI)



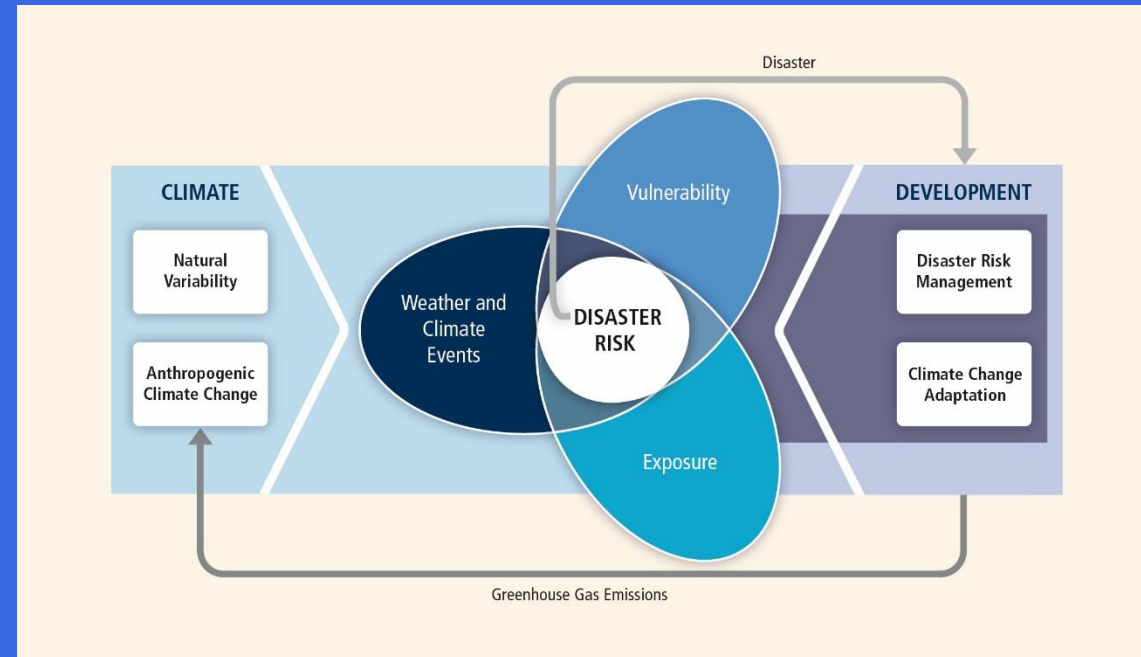
ILMATIETEEN LAITOS
METEOROLOGISKA INSTITUTET
FINNISH METEOROLOGICAL INSTITUTE



...if hazards & solutions are identified, what next?

What planning/policy interventions could be effective?

(for controlling vulnerability/exposure to climate and weather impacts)



(IPCC SREX & AR5)



ILMATIETEEN LAITOS
METEOROLOGISKA INSTITUTET
FINNISH METEOROLOGICAL INSTITUTE



Tinbergen's rule

...there should be at least the same number of policy instruments as there are targets.

otherwise some targets will not be achieved = **trade-offs unavoidable**



Overview of the economic assessments

Interventions

Passive control systems (PCS's)
Behavioural change

- Green roofs
- Green infrastructure
- Travelling trees
- Mobility behaviour
- Low boundary walls
- Photocatalytic paint
- Living Labs
- Citizen sensor kits

Effects

- Reduced exposure to air pollution
- Regulation of Urban Heat Island effect



Economic Assessment

Non-market economic impacts:

- Health
(reduced mortality/morbidity)

Market economic impacts:

- Housing prices
- Willingness to Pay for citizen kits

Portfolio analysis:

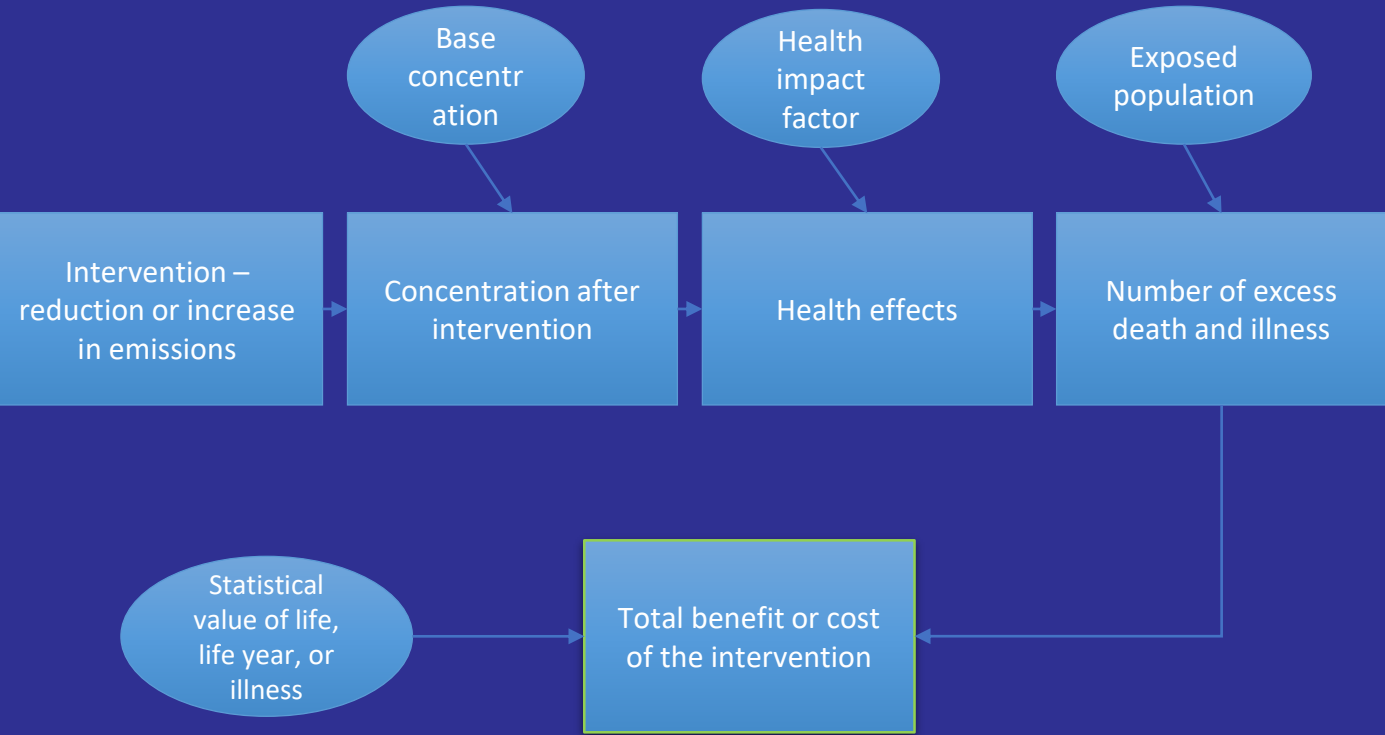
- Accounting for uncertainty of economic impacts.



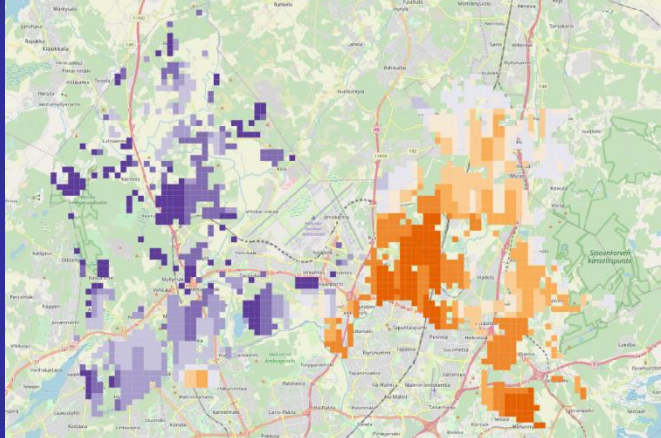
ILMATIETEEN LAITOS
METEOROLOGISKA INSTITUTET
FINNISH METEOROLOGICAL INSTITUTE



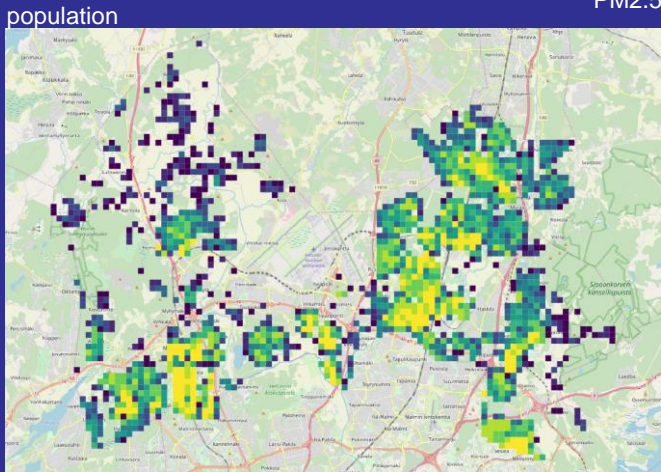
Impact pathway approach



In practice: GIS data + detailed response functions, e.g.:



PM2.5



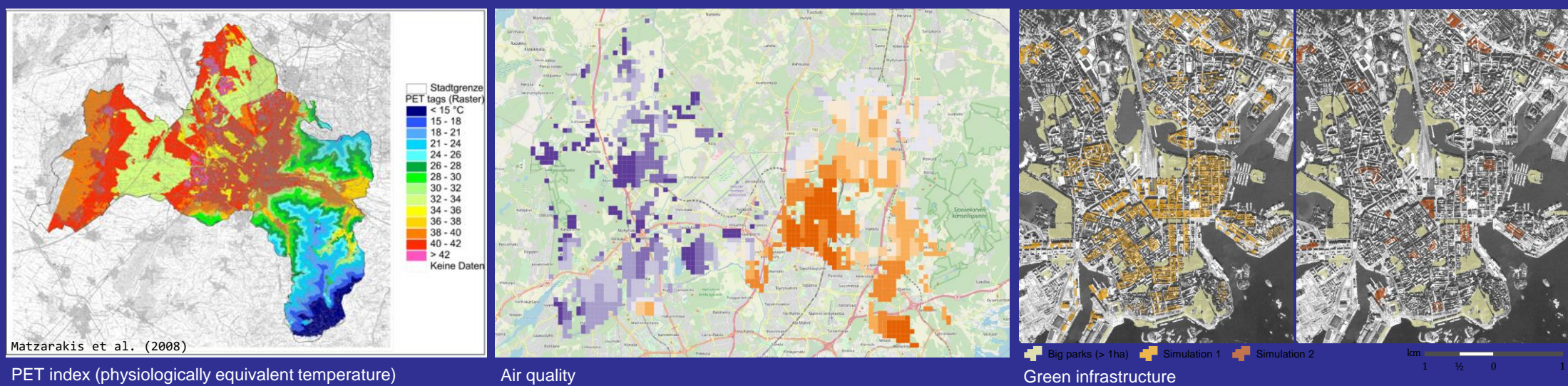
population



ILMATIETEEN LAITOS
METEOROLOGISKA INSTITUTET
FINNISH METEOROLOGICAL INSTITUTE



Hedonic price approach



$$Price/m^2 = f(\text{structural, locational, neighborhood attributes of properties})$$



We get “shadow prices” for AQ, PET, interventions: indicators for costs/benefits to households and the city



ILMATIETEEN LAITOS
METEOROLOGISKA INSTITUTET
FINNISH METEOROLOGICAL INSTITUTE





ILMATIETEEN LAITOS
METEOROLOGISKA INSTITUTET
FINNISH METEOROLOGICAL INSTITUTE



Thank you 😊

athanasios.votsis@fmi.fi

riina.haavisto@fmi.fi

vaino.nurmi@fmi.fi

