



**Barcelona
Supercomputing
Center**

Centro Nacional de Supercomputación



EXCELENCIA
SEVERO
OCHOA

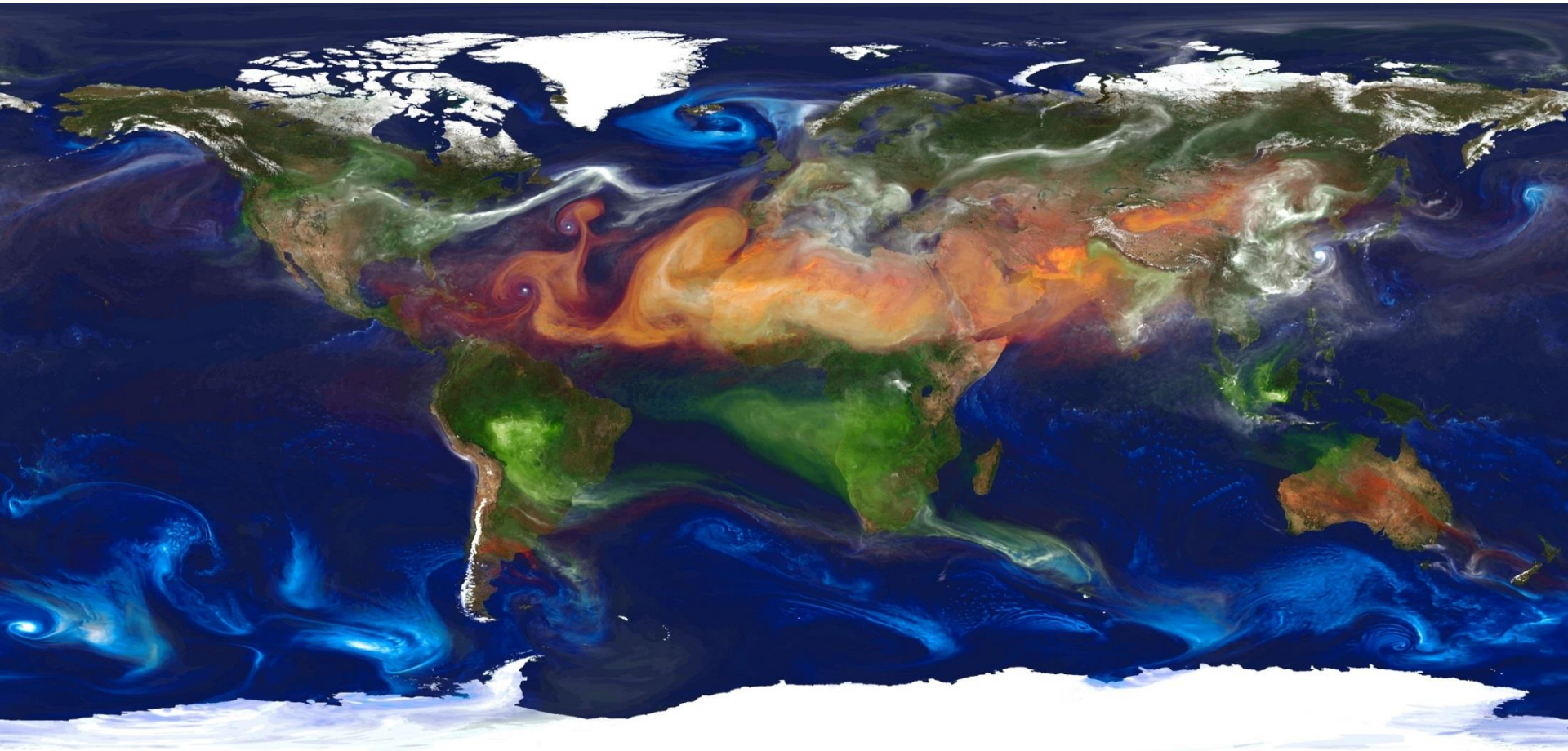
Modelling and forecasting Sand and Dust Storms

Sara Basart (sara.basart@bsc.es)

*Earth Sciences Department,
Barcelona Supercomputing Center (BSC)*

*inDust User Workshop on Air Quality, 11th March
2019, Rome, Italy*

Dust cycle and its extension



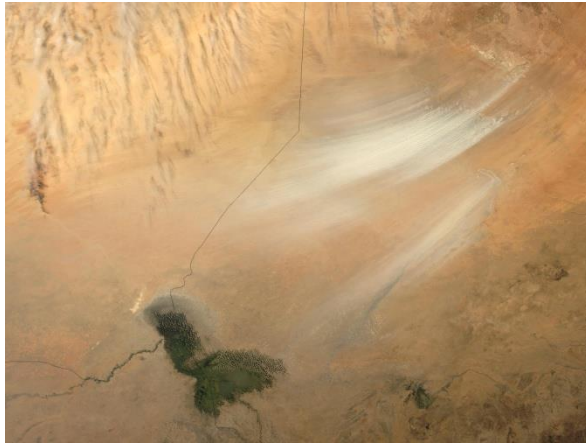
Organic Carbon + Elemental carbon

Dust

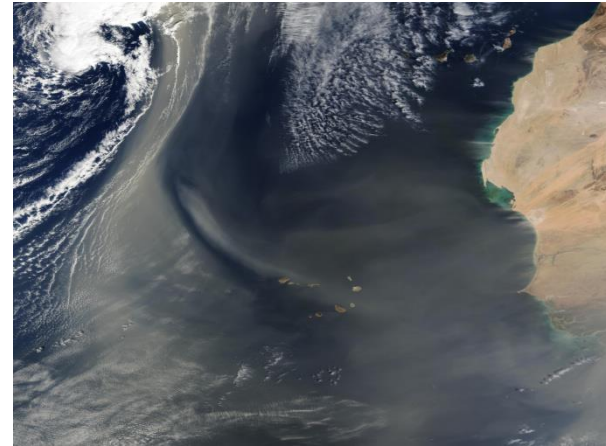
Sulfate

Sea salt

Dust cycle and associated processes



MODIS true colour composite image for March 2005 depicting a dust storm initiated at the Bodélé Depression (Chad Basin)

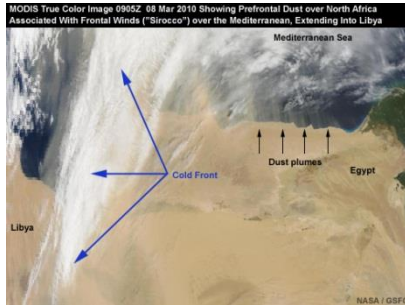


MODIS True color Western Africa – Atlantic Ocean

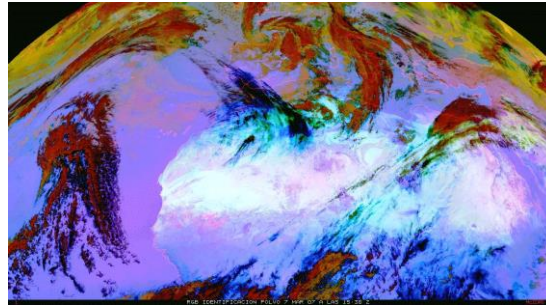
Dust transport is a global phenomenon. However, dust emission is a threshold phenomenon, sporadic and spatially heterogeneous, that is locally controlled on small spatial and temporal scales.

Dust cycle and associated processes

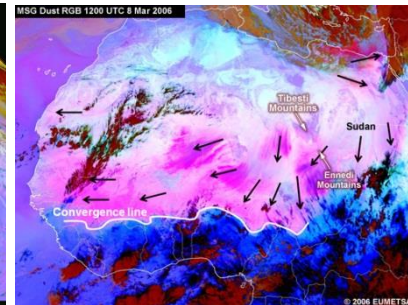
Synoptic dust storms (large scale weather systems)



Pre-frontal winds

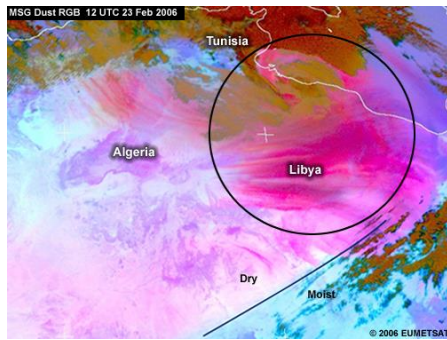


Post-frontal winds

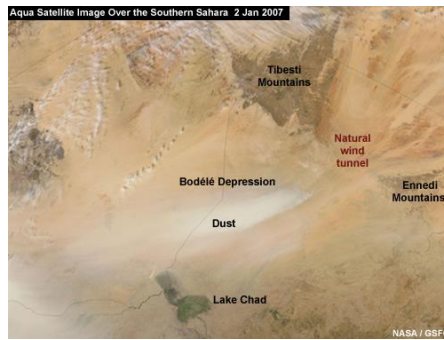


Large-scale trade winds

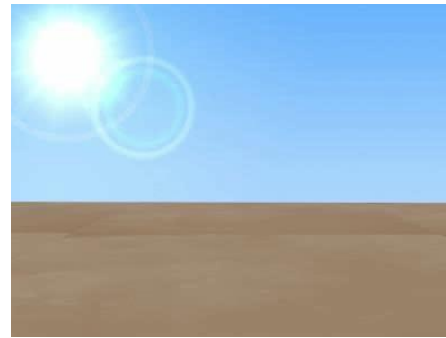
Mesoscale dust storms



Downslope winds



Gap flow



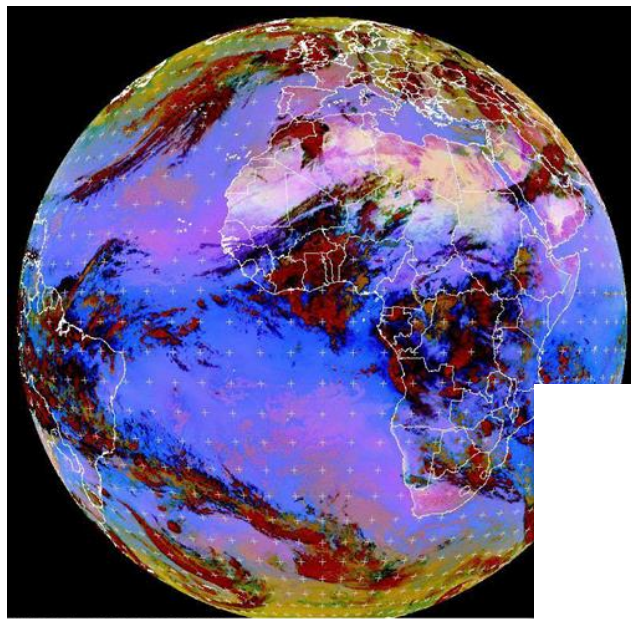
Dust devils



Haboobs

Dust forecasting models

Dust models are a **mathematical representation** of atmospheric dust cycle.

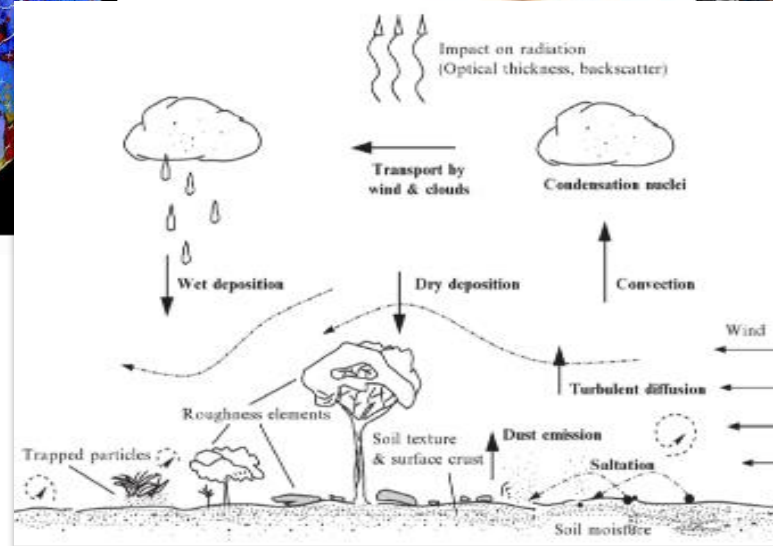
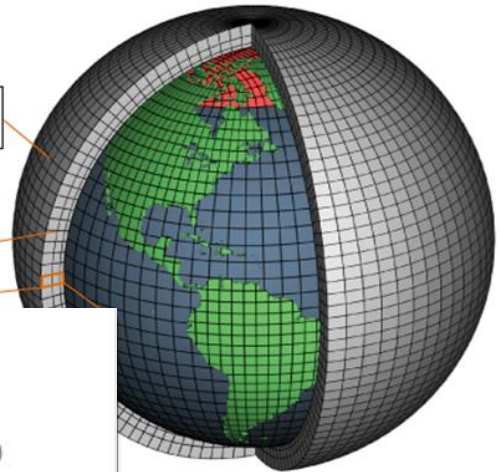


MET9 RGB-Dust 2011-04-05 00:00 UTC



Horizontal Grid
(Latitude-Longitude)

Vertical Grid
(Height or Pressure)



Dust forecasting models

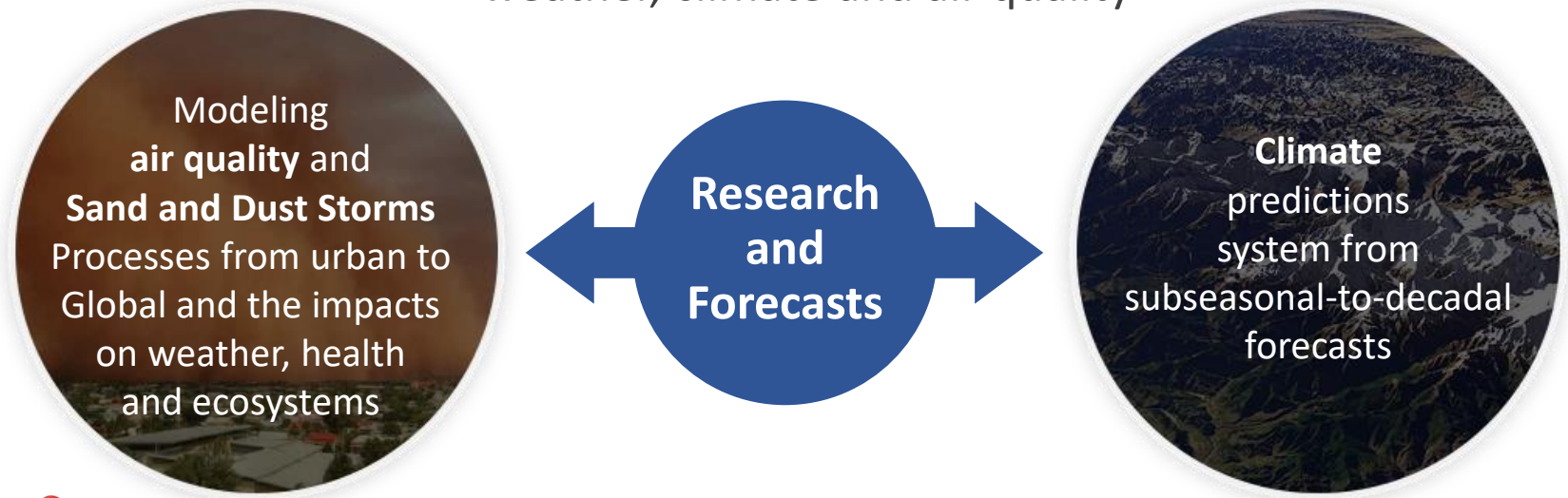
Dust forecasting models do **not** take account dust **resuspension**



Kathmandu, Nepal, March 2017

Earth Sciences Department at BSC

Environmental modelling and forecasting, with a particular focus on weather, climate and air quality



AXA
Research Fund

Service Users Sectors



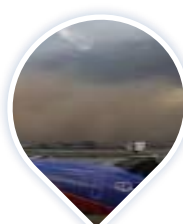
Infrastructures



Solar
Energy



Urban
development



Transport



Wind
Energy



Agriculture



Insurance

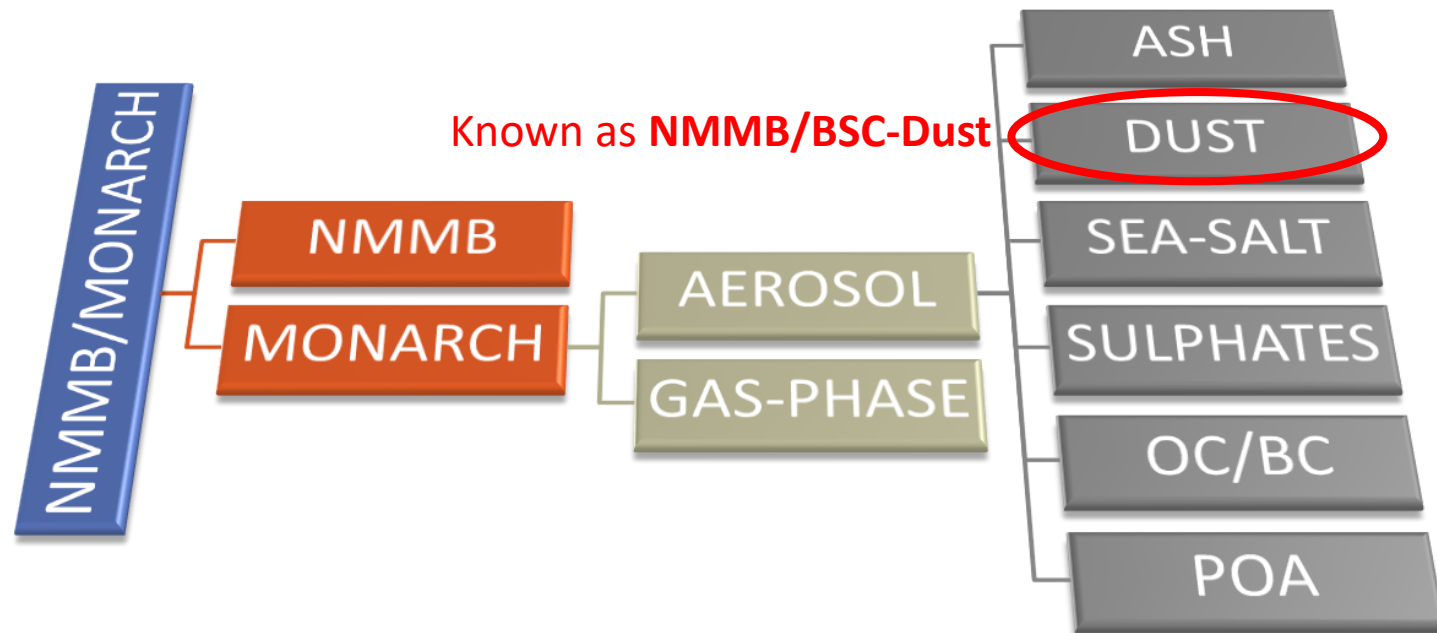


Barcelona
Supercomputing
Center
Centro Nacional de Supercomputación

www.bsc.es/ess/

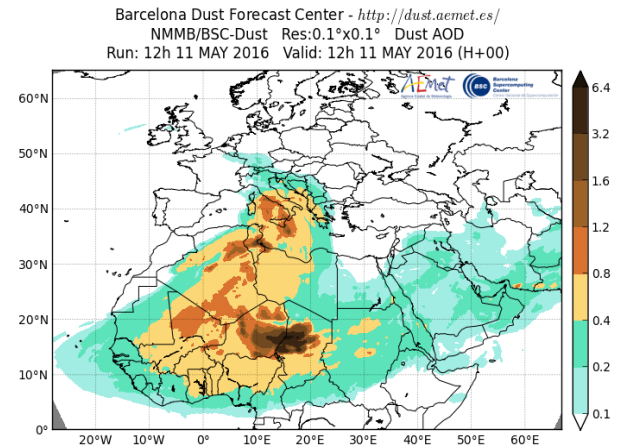
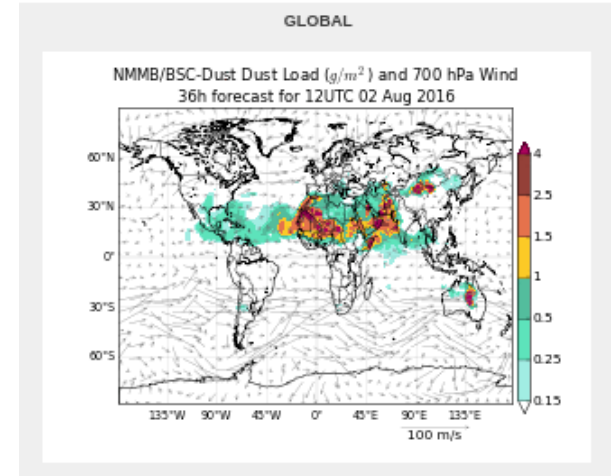
NMMB-MONARCH: Atmospheric Composition and Air Quality

- The main system is build on the **meteorological driver NMMB**
- **Multiscale**: global to regional scales allowed (nesting capabilities)
- **Nonhydrostatic** dynamical core: single digit kilometre resolution allowed
- Fully **on-line** coupling: weather-chemistry feedback processes allowed
- Enhancement with a **data assimilation** system



Mineral Dust Services




- **BSC dust operational forecast** (global and regional domains)
 - Contribution to the **SDS-WAS** (regional) and **ICAP** (global) multi-model ensembles
- **WMO Dust Regional Centers**
 - **Barcelona Dust Forecast Center.** First specialized WMO Center for mineral dust prediction. Started in 2014 - **Operational**
 - <http://dust.aemet.es>
 - @Dust_Barcelona
 - **SDS-WAS Regional Center.** Sand and Dust Storm Warning Advisory and Assessment System. Started in 2010 – **Research**
 - <http://sds-was.aemet.es>



Barcelona Dust Forecasting Center

Log in

BARCELONA DUST FORECAST CENTER



[HOME](#) [ABOUT US](#) [FORECAST](#) [EVALUATION](#) [METHODS](#) [NEWS](#) [EVENTS](#) [CONTACT](#)

NEWSLETTER

Keep up to date with our activities!

Full Name

Your email

Subscribe

SEARCH

Search Site

Search

HOME


- [About us](#)
- [Forecast](#)
- [Evaluation](#)
- [Methods](#)
- [News](#)
- [Events](#)
- [Contact](#)

LATEST NEWS

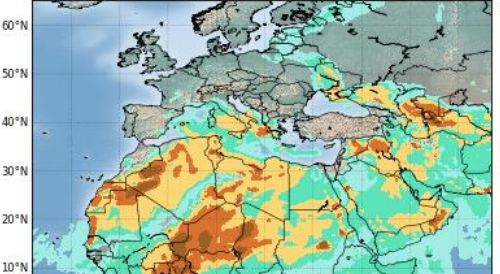
Barcelona Dust Forecast Center starts operations

The Center will release operational dust forecasts for Northern Africa, Middle East and Europe

[Read More](#)




Barcelona Dust Forecast Center
NMMB/BSC-Dust Res: 0.1°x0.1° Dust Surface Conc. (µg/m³)
Run: 12h 19 MAY 2014 Valid: 18h 20 MAY 2014 (H+30)





Dust forecast


Latest dust forecast for Northern Africa, Middle East and Europe

[Check it here](#)

 **Barcelona Supercomputing Center**
Centro Nacional de Supercomputació

 **Aemet**
Agencia Estatal de Meteorología

 **World Meteorological Organization**

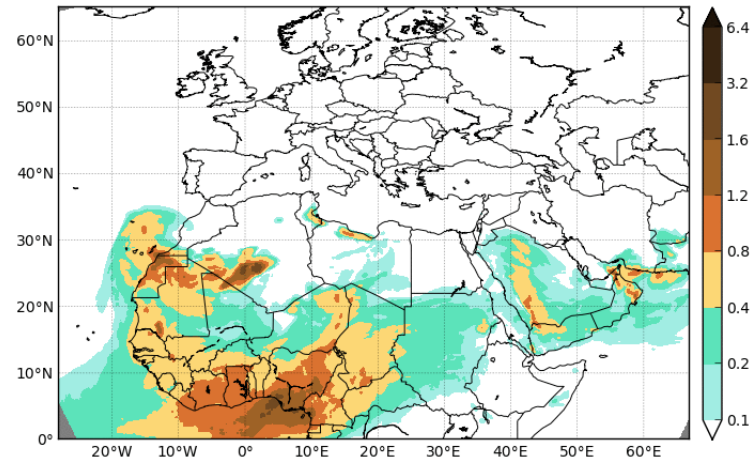
 **@Dust_Barcelona**
<http://dust.aemet.es/>

Barcelona Dust Forecasting Center

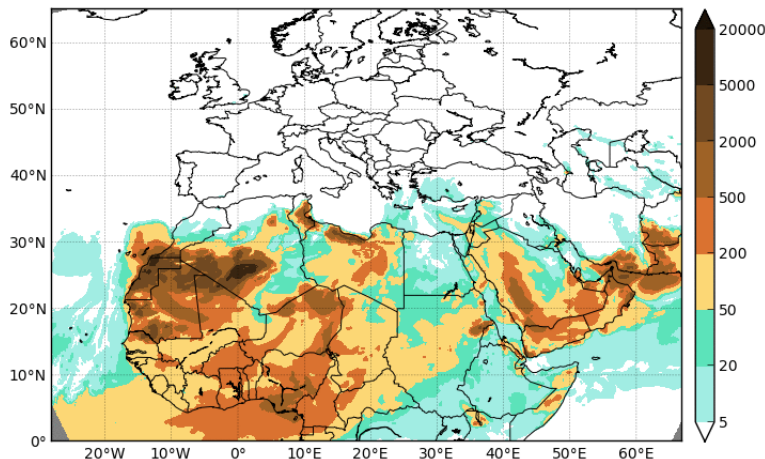
72-hours forecasts of:

- *Dust Optical Depth at 550nm*
- *Dust Dry and Wet Deposition*
- *Dust Load*
- *Dust Surface Concentration*
- *Dust Surface Extinction at 550nm*

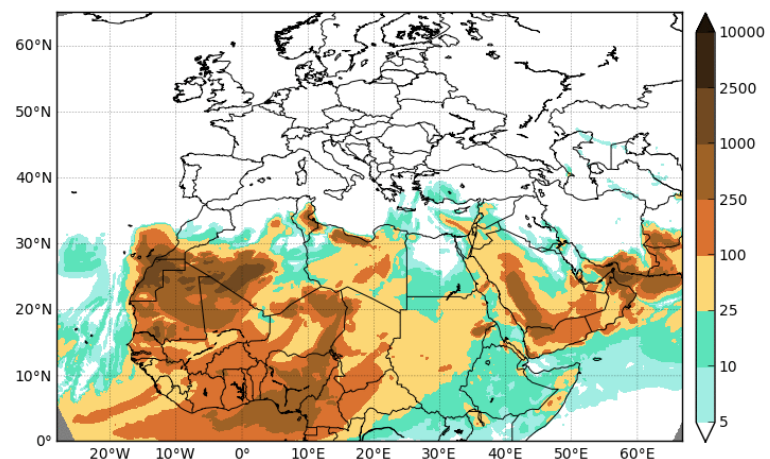
Barcelona Dust Forecast Center
NMMB/BSC-Dust Res:0.1°x0.1° Dust AOD
Run: 12h 07 MAR 2015 Valid: 12h 07 MAR 2015 (H+00)



Barcelona Dust Forecast Center
NMMB/BSC-Dust Res:0.1°x0.1° Dust Surface Conc. ($\mu\text{g}/\text{m}^3$)
Run: 12h 07 MAR 2015 Valid: 12h 07 MAR 2015 (H+00)



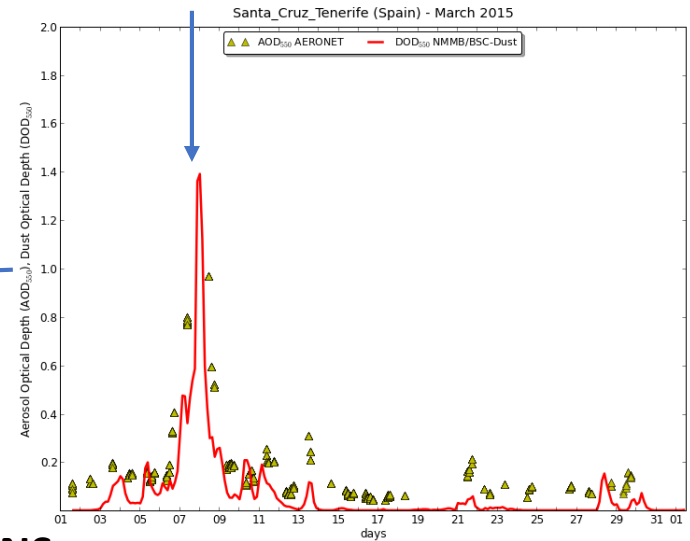
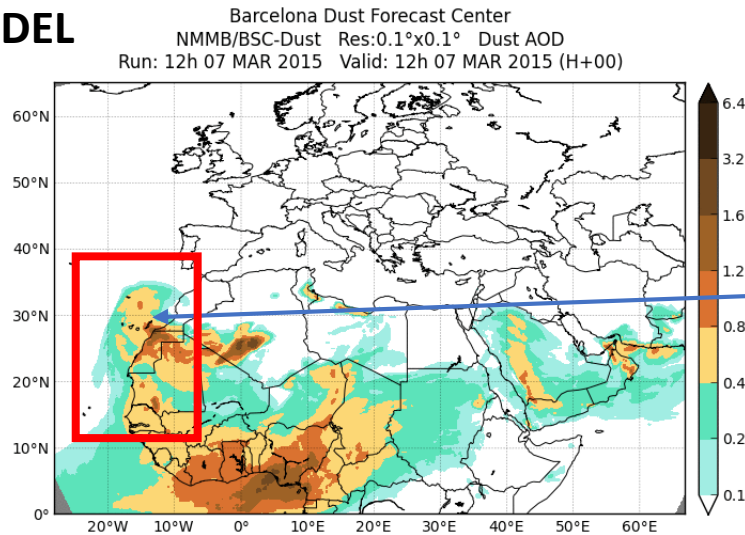
Barcelona Dust Forecast Center
NMMB/BSC-Dust Res:0.1°x0.1° Dust Surface Ext. (Mm^{-1})
Run: 12h 07 MAR 2015 Valid: 12h 07 MAR 2015 (H+00)



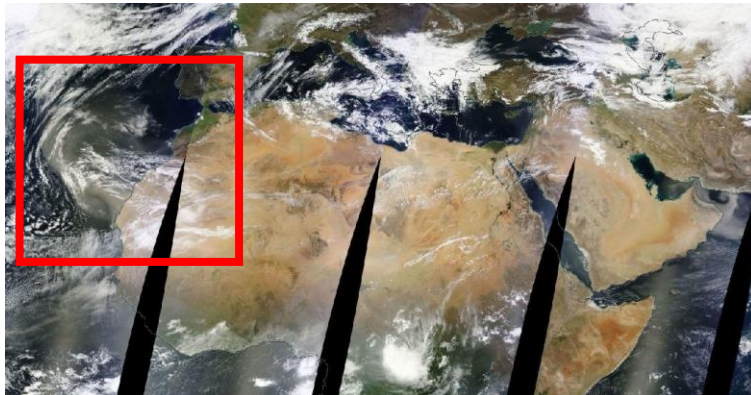
Barcelona Dust Forecasting Center

— Model
▲ AERONET Obs.

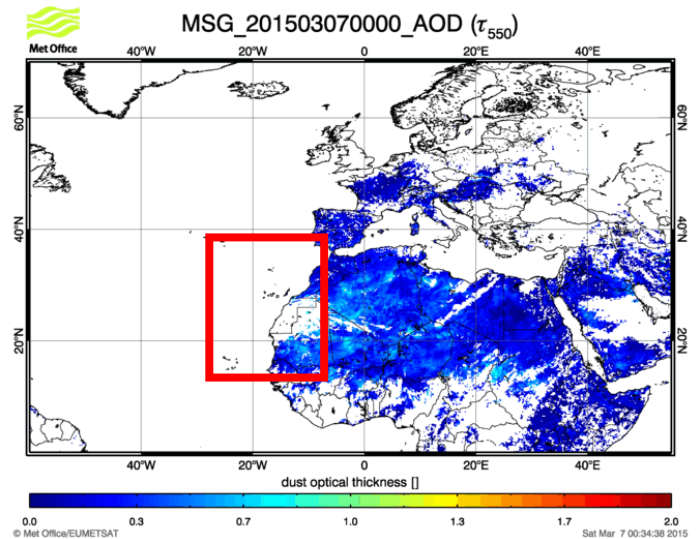
MODEL



OBSERVACIONES




MODIS composite 8th March
from EOSDIS World Viewer




SDS-WAS and the NAMEE Regional Center

<http://sds-was.aemet.es/>




World
Meteorological
Organization
Weather • Climate • Water


NORTHERN AFRICA-MIDDLE EAST-EUROPE (NA-ME-E) REGIONAL CENTER
WMO Sand and Dust Storm Warning Advisory and Assessment System (SDS-WAS)



GOBIERNO DE ESPAÑA



AEMet
Agencia Estatal de Meteorología



Barcelona
Supercomputing
Center
Centro Nacional de Supercomputación

WMO SDS WAS || Asia Regional Center || America Regional Center

[HOME](#) | [ABOUT US](#) | [FORECAST & PRODUCTS](#) | [PROJECTS & RESEARCH](#) | [MATERIALS](#) | [NEWS](#) | [EVENTS](#) | [CONTACT US](#)

Home

You are here: Home

- About us
- Forecast & Products
- Projects & Research
- Materials
- News
- Events

Search

Search Site

Latest News

[Paper on statistical evaluation of dust events in West Asia](#)
May 08, 2018

[CAMS releases first five years of new global reanalysis data](#)

Northern Africa-Middle East-Europe (NA-ME-E) Regional Center

by [Francesco Benincasa](#) — last modified May 29, 2012 03:33 PM

Outstanding

[The InDust COST Action website has been launched](#)

[RGB dust product from Himawari-8 and GOES-16](#)

[Training Workshop on Sand and Dust Storms in the Arab Region](#)

[The 9th International Workshop on Sand / Dust storm and Associated Dustfall. Call for Abstracts](#)

[InDust](#)

Subscribe to the Public Newsletter!

To be informed about our activities, news and events related to dust. Frequency is almost monthly.

Portal manual

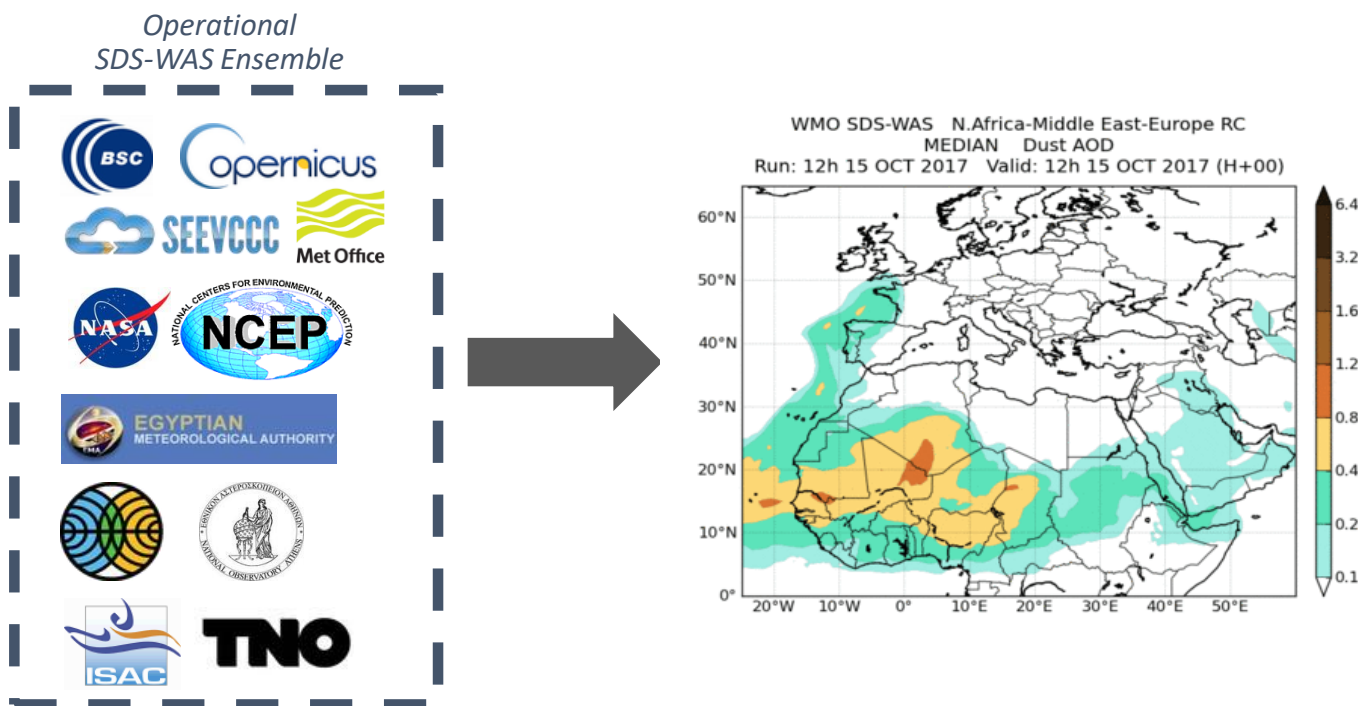
Please find a brief manual [here](#).

Dust forecasts

WMO SDS-WAS N.Africa-Middle East-Europe RC MEDIAN Dust Surface Concentration ($\mu\text{g}/\text{m}^3$)	Dakar (Senegal) - April 2018
--	------------------------------

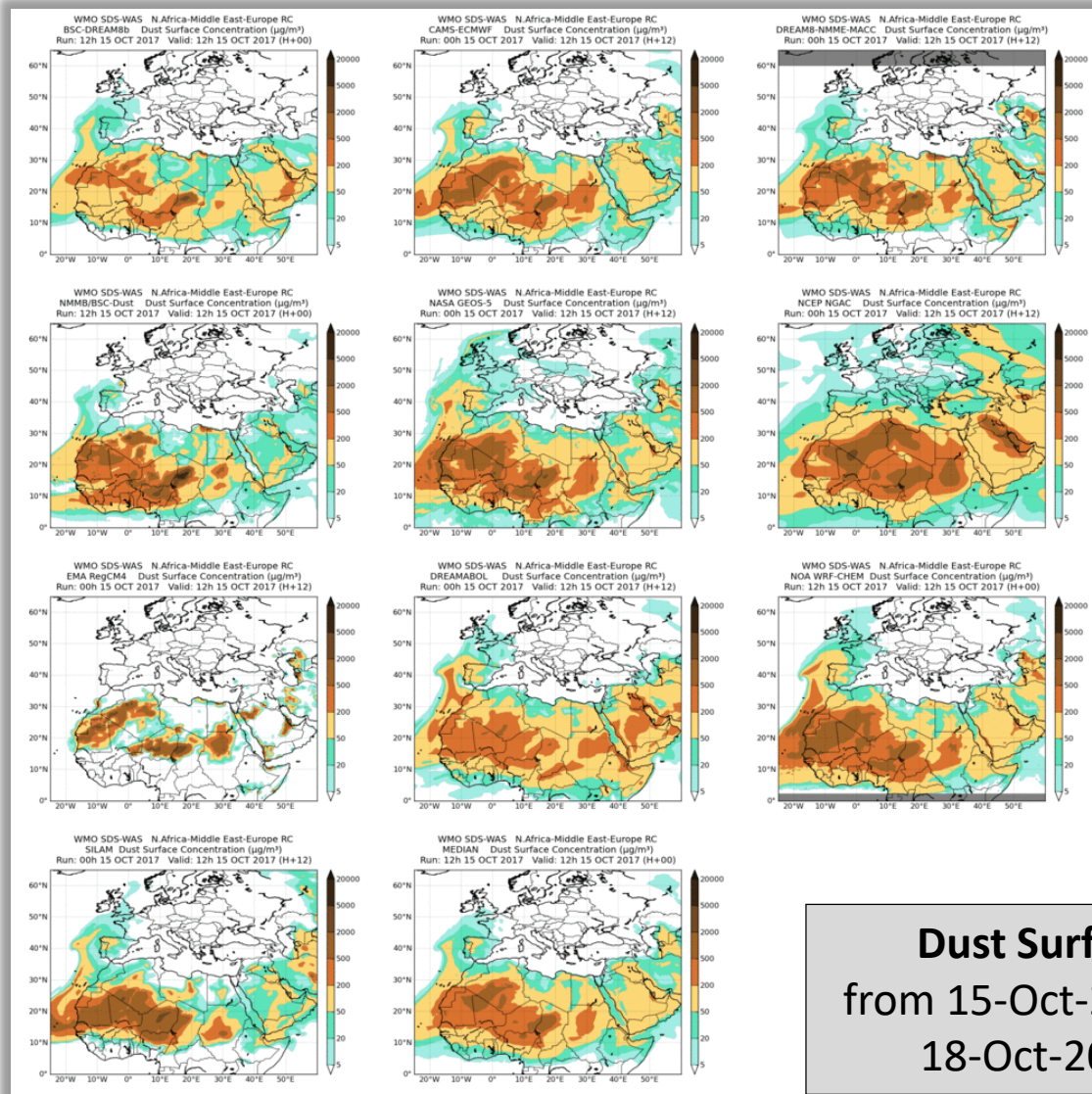
SDS-WAS NAMEE: Modelling

Products: surface concentration and DOD maps, the SDS-WAS multi-model product



12 Global – Regional models from ~ 100 to 10 km

SDS-WAS NAMEE: Joint Visualization



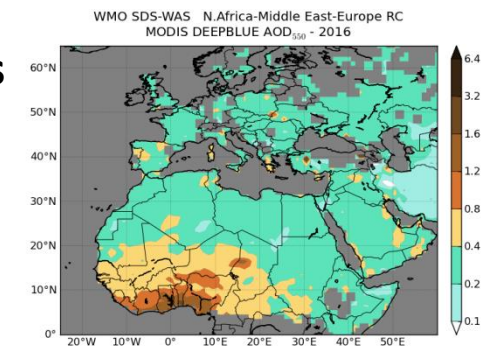
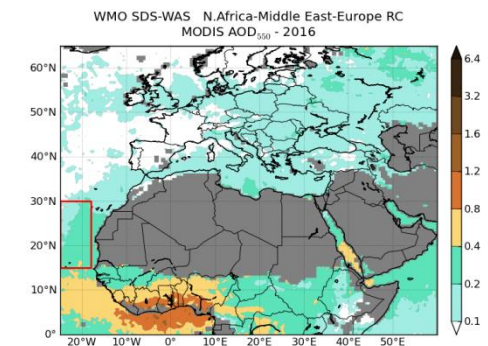
Dust Surface Conc.
from 15-Oct-2017 12:00 to
18-Oct-2017 00:00

SDS-WAS NAMEE: DOD Model Evaluation

- **Evaluation with AERONET data**
 - Graphical NRT Evaluation by site
 - Evaluation scores monthly/seasonal/annual and sites
- **Evaluation with MODIS data onto the Atlantic**
 - Evaluation scores monthly/seasonal/annual



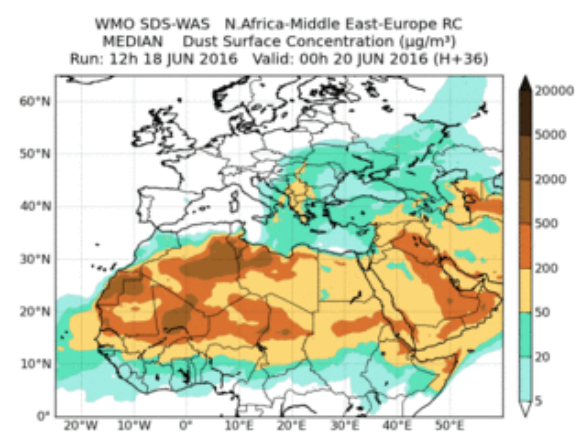
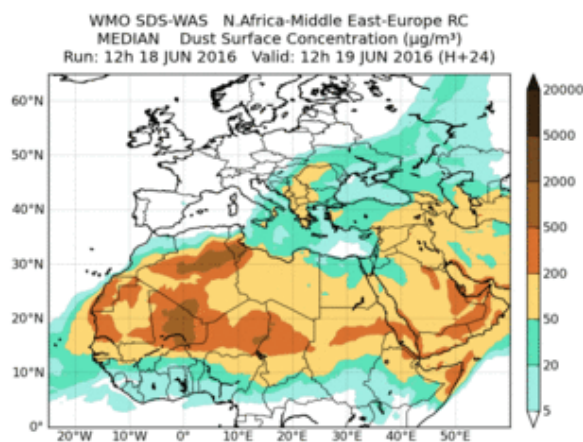
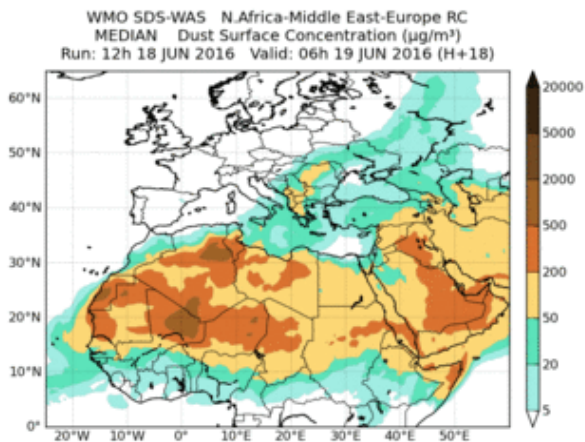
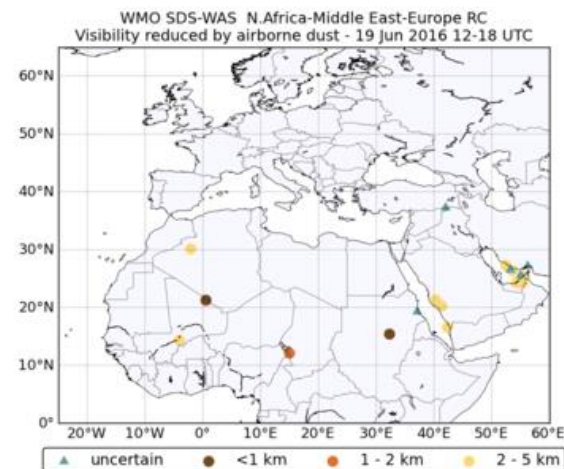
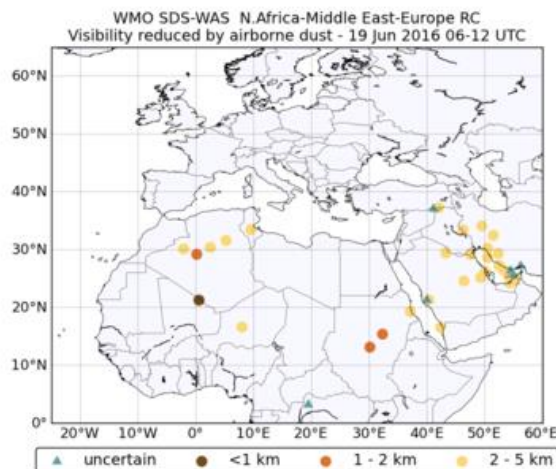
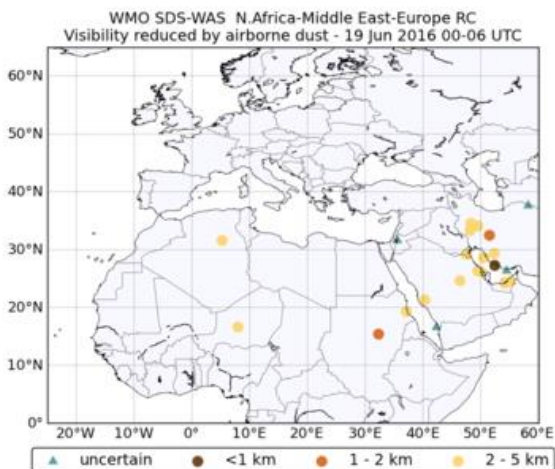
- **Evaluation of dust models with MODIS Deep Blue retrievals**
 - Evaluation scores monthly/seasonal/annual



<http://sds-was.aemet.es/forecast-products/forecast-evaluation>

SDS-WAS NAMEE: Visibility vs Surf. Conc.

NRT visibility evaluation: 19th june 2016

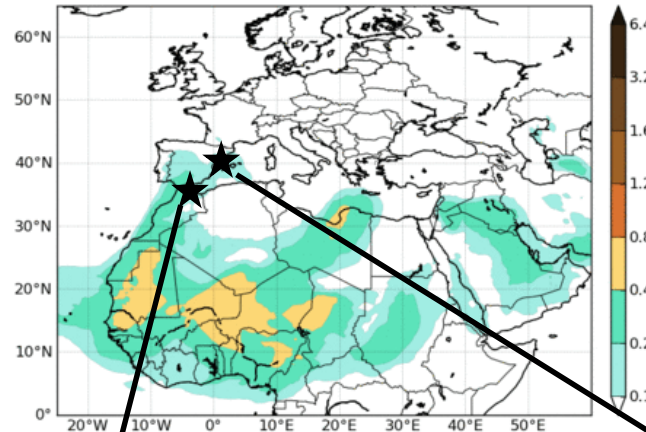


SDS-WAS NAMEE: Dust Profiles Evaluation

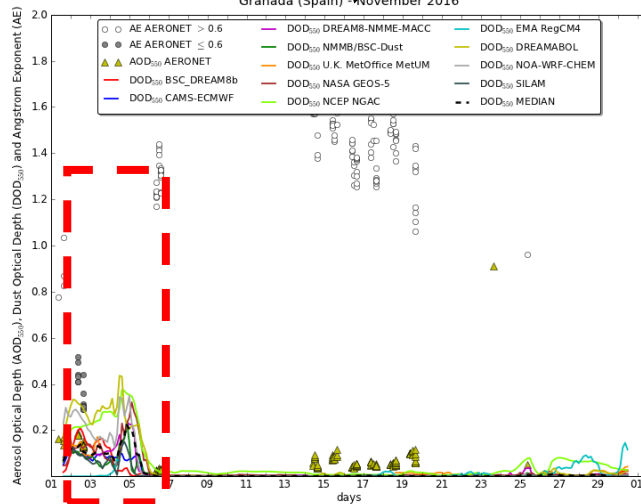
W. Mediterranean dust event: 2 - 5 November 2016



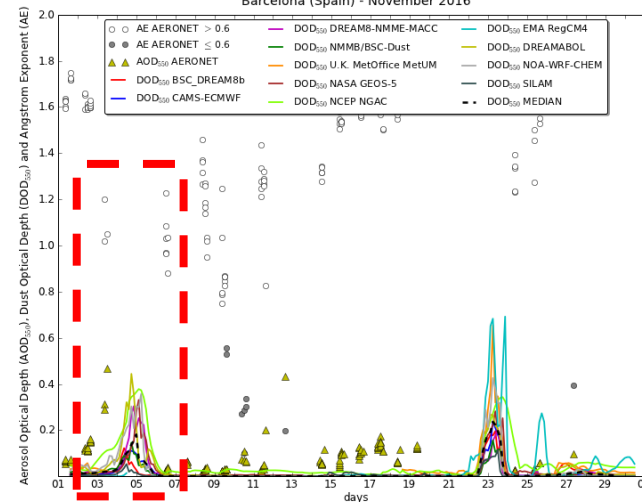
WMO SDS-WAS N.Africa-Middle East-Europe RC
MEDIAN Dust AOD
Run: 12h 04 NOV 2016 Valid: 12h 04 NOV 2016 (H+00)



Granada (Spain) - November 2016



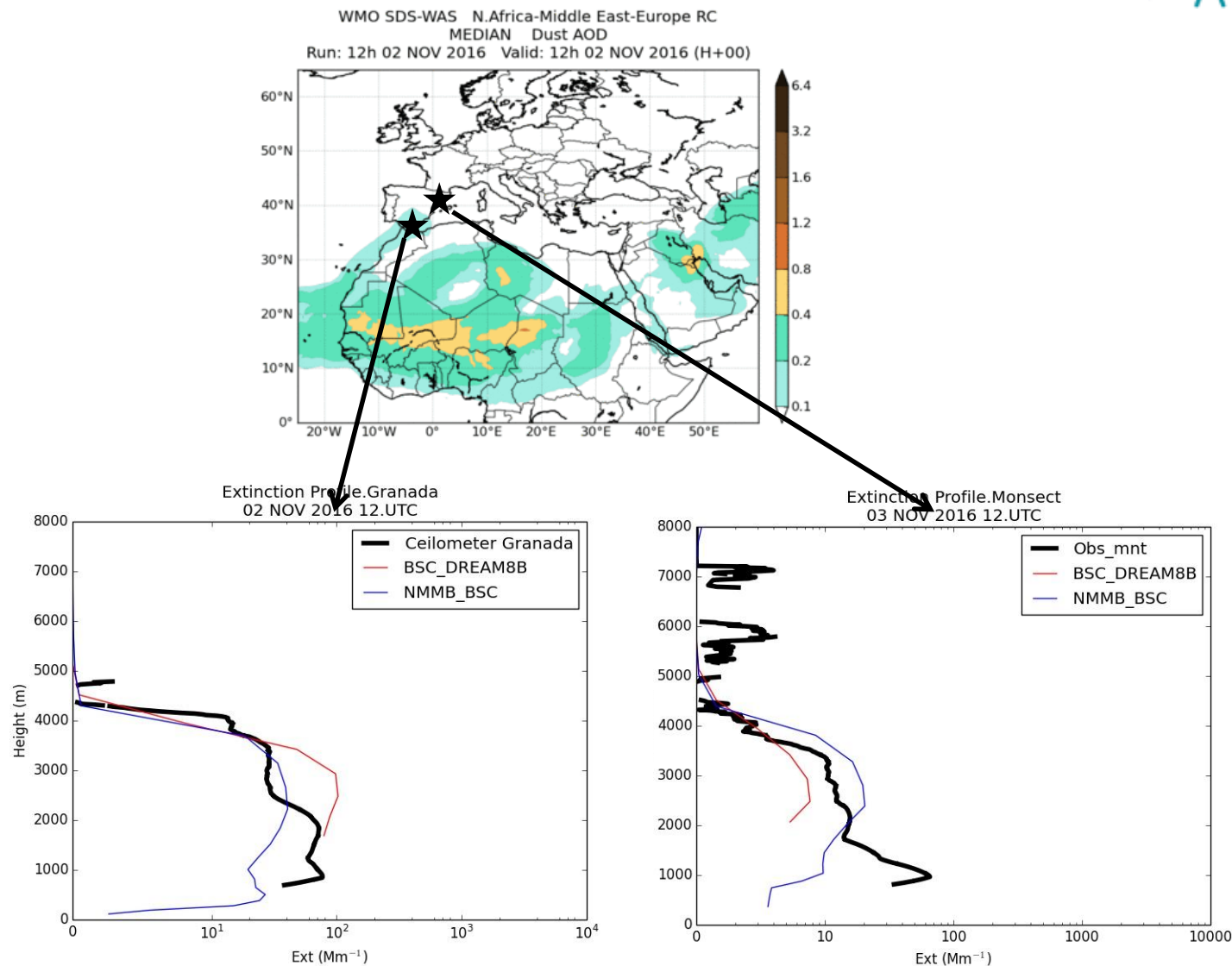
Barcelona (Spain) - November 2016



AERONET

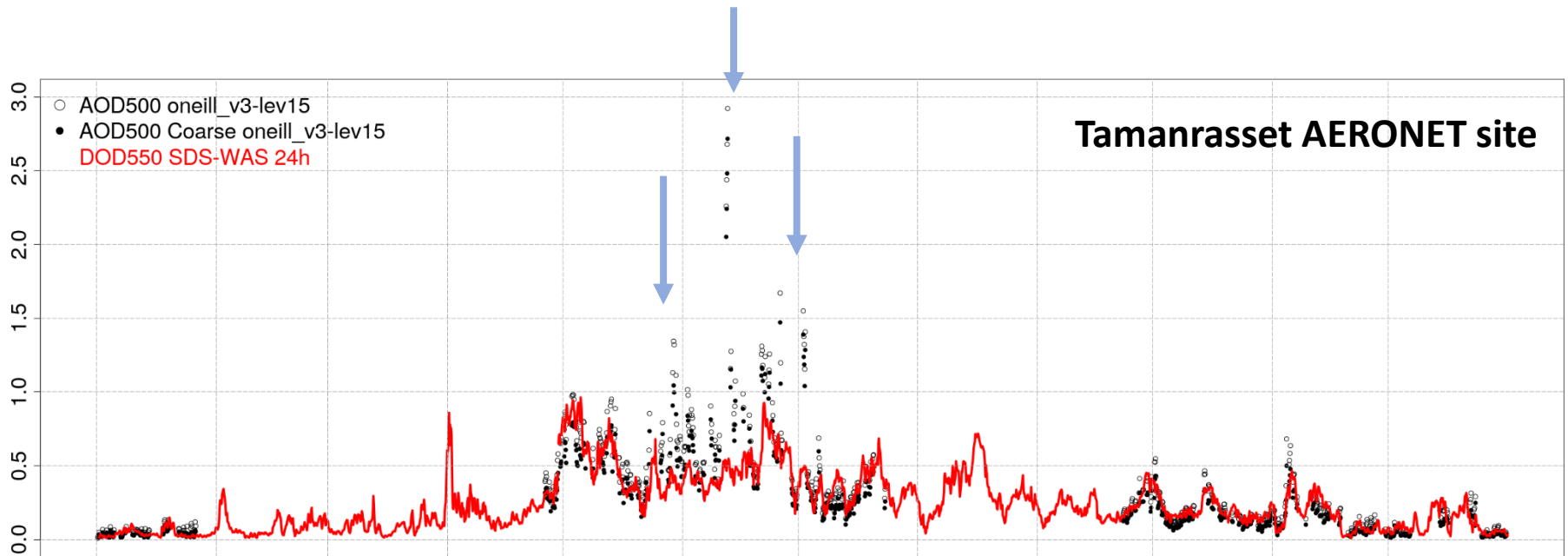
SDS-WAS NAMEE: Dust Profiles Evaluation

Atlantic dust event: 2 - 5 November 2016

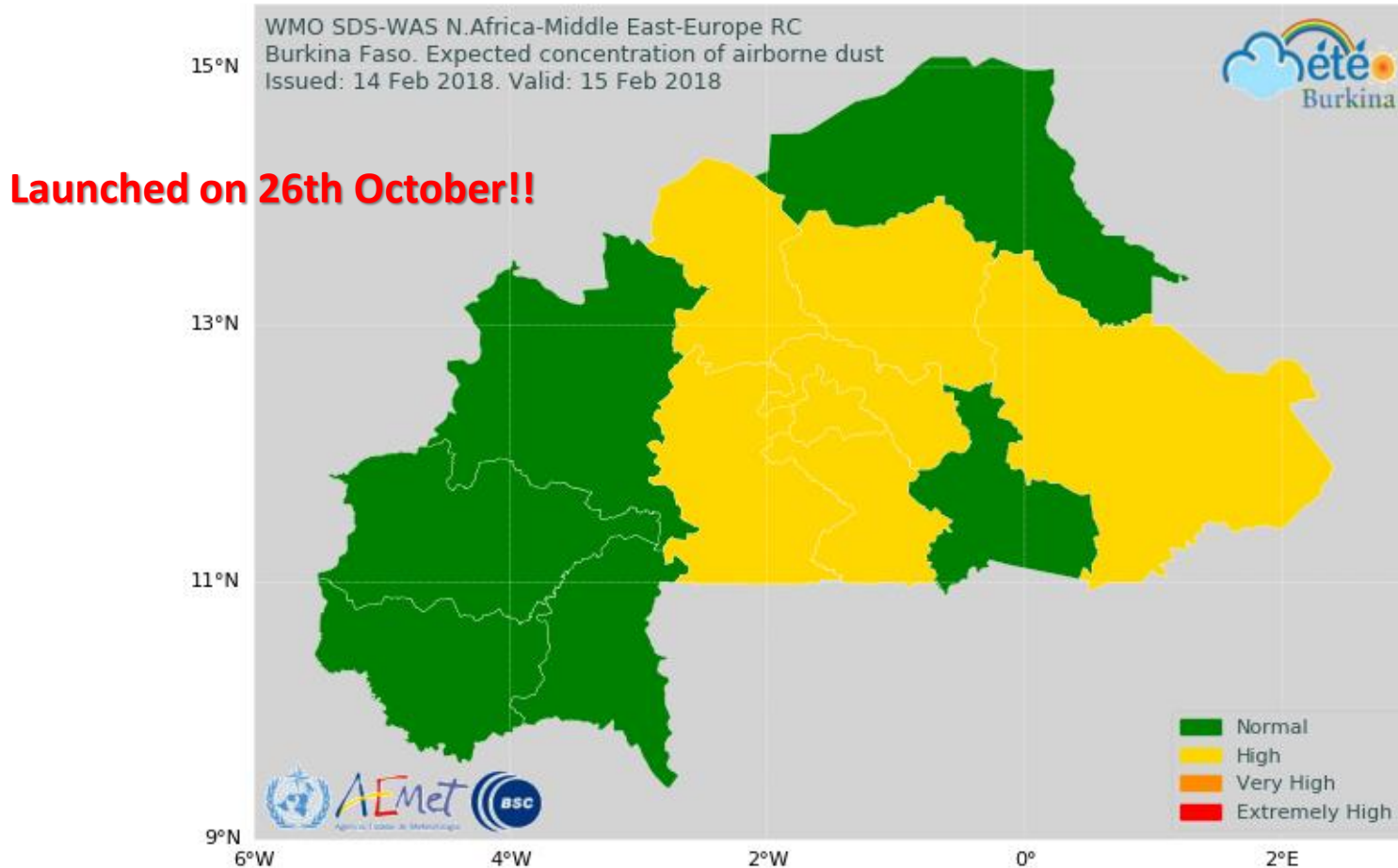


SDS-WAS NAMEE: DOD Model Evaluation

- **Evaluation results**
 - The current state-of-the art operational dust models are not able to reproduce **smaller scale SDS** → High-resolution simulations



SDS-WAS NAMEE: Early Warning System for Burkina Faso



<https://sds-was.aemet.es/forecast-products/burkina-faso-warning-advisory-system>



Barcelona
Supercomputing
Center
Centro Nacional de Supercomputació



Studies on Air Quality

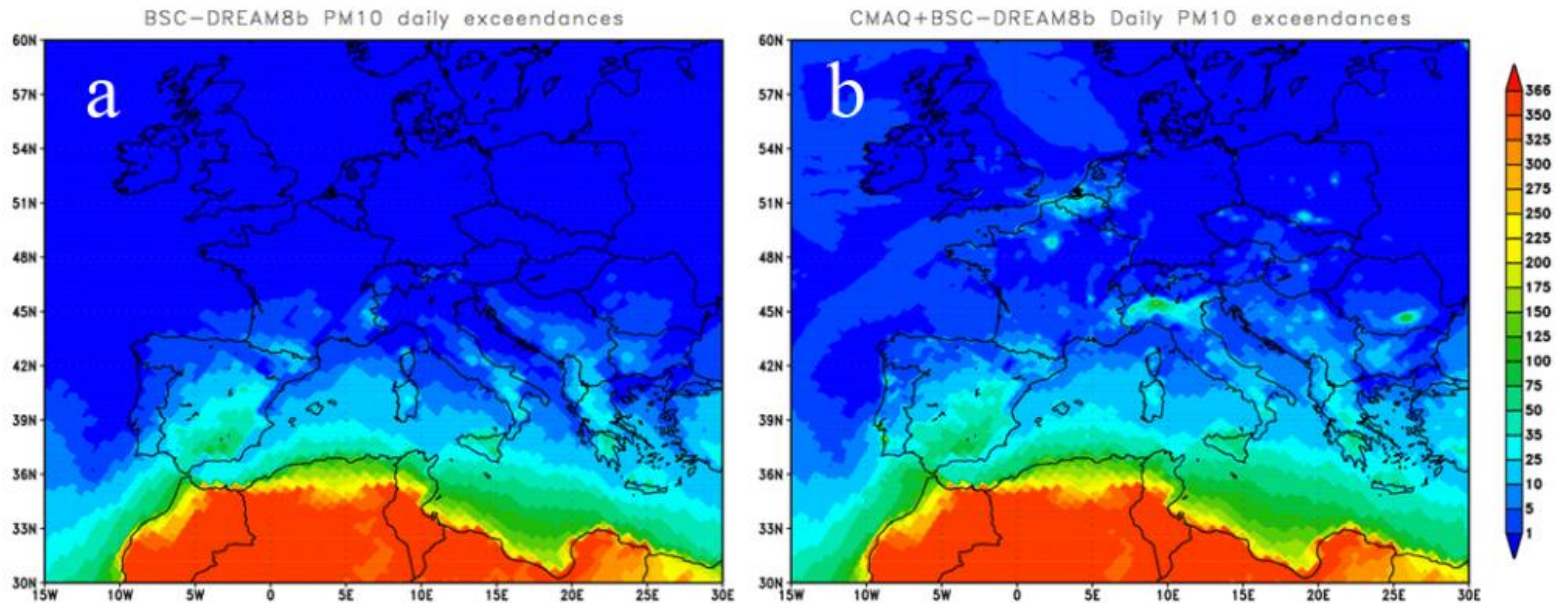
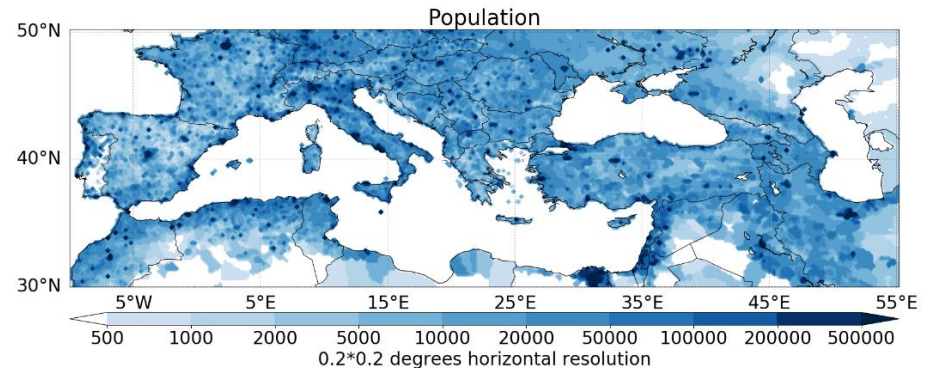
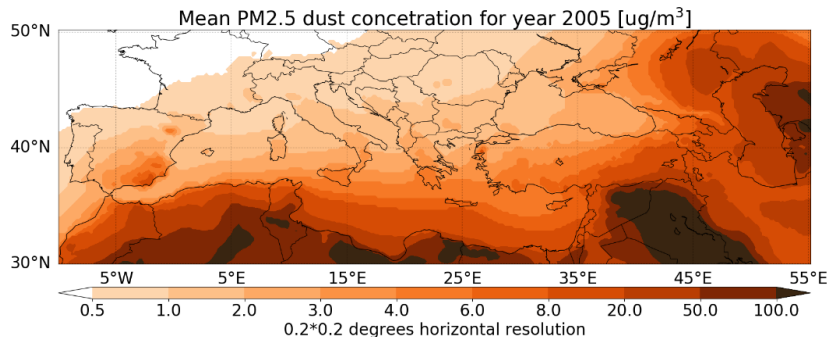


Fig. 11. Number of the days exceeding the EU PM₁₀ daily limit value ($>50 \mu\text{g m}^{-3}$) for **(a)** BSC-DREAM8b and **(b)** BSC-DREAM8b + CMAQ derived aerosol. Correction factors are applied to sulphate, nitrate, ammonium and EC + OC in CMAQ model outputs.

Pilot studies on health impact

NMME-DREAM model simulations



CRF functions

$$\Delta \text{Mort} = y_0 * (1 - e^{-\beta \Delta X}) * \text{Population}$$

where ΔMort is the change in annual mortality due to a pollutant, y_0 the baseline mortality rate (BMR) for a given population, β the concentration–response function (CRF), ΔX the change in concentration of a given pollutant X relative to clean conditions

- Concentration response function describes increased risk of a population to certain diseases when exposed to a particular pollutant
- The CRFs used in this study (Krewski et al. (2009), Lelieveld et al. (2013)) based on American Cancer Society (ACS) Cancer Prevention Study II (CPS-II). **CRFs used may not be representative for all regions**

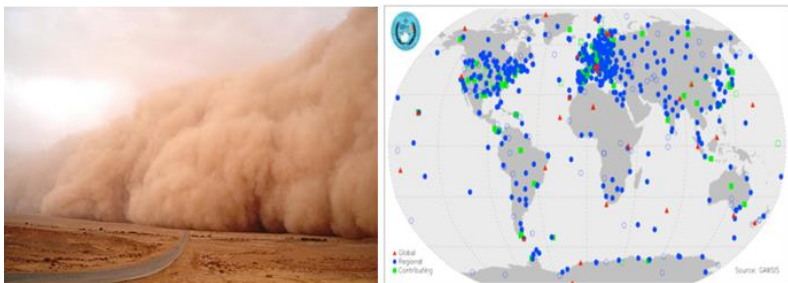
Pilot studies on health impact

Cardio Pulmonary Diseases Mortality with dust

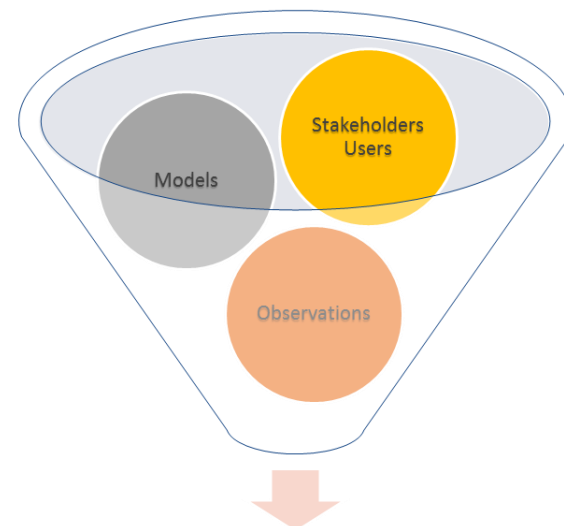


Dust Storms Assessment for the development of user-oriented **C**limate Services in Northern Africa, Middle East and Europe

- SDS is a serious hazard for life, health, environment and economy
- Lack of dust observations (past trends and current conditions)



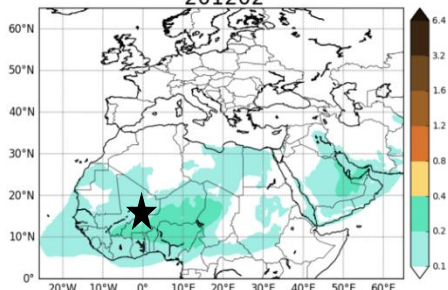
GOAL: Develop **dust-related services** to specific socio-economic sectors based on an advanced **dust reanalysis** for the NAMEE region



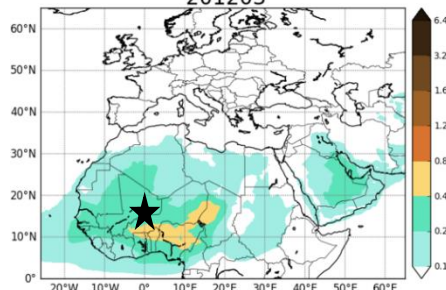
Dust-related Climate Services



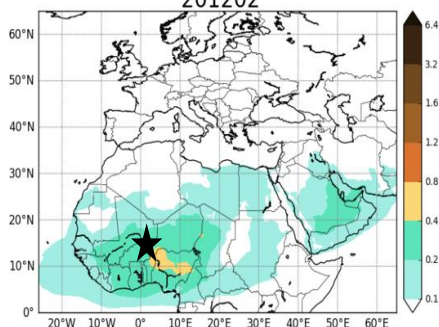
Dust AOD (550nm), ctl_forecast
201202



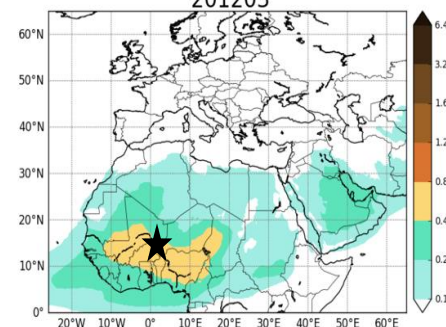
Dust AOD (550nm), ctl_forecast
201203



Dust AOD (550nm), ens_analysis
201202



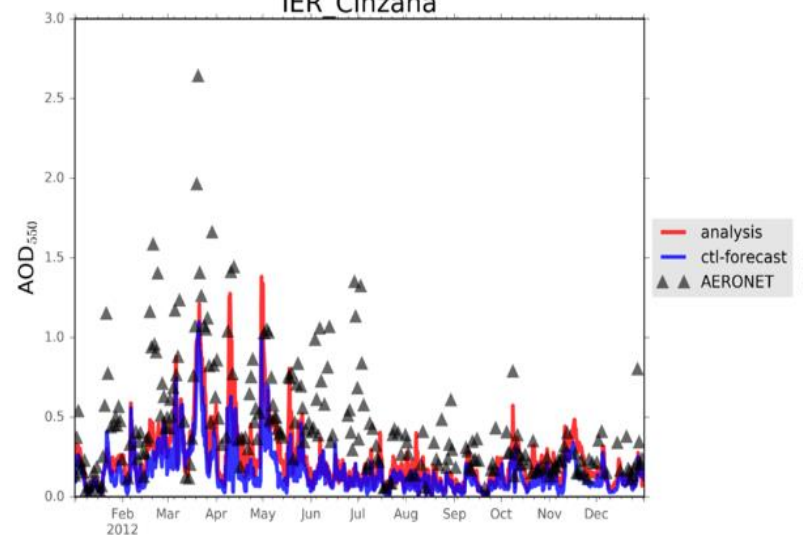
Dust AOD (550nm), ens_analysis
201203



Assimilating MODIS DOD Land product (Courtesy P. Ginoux, NOAA)

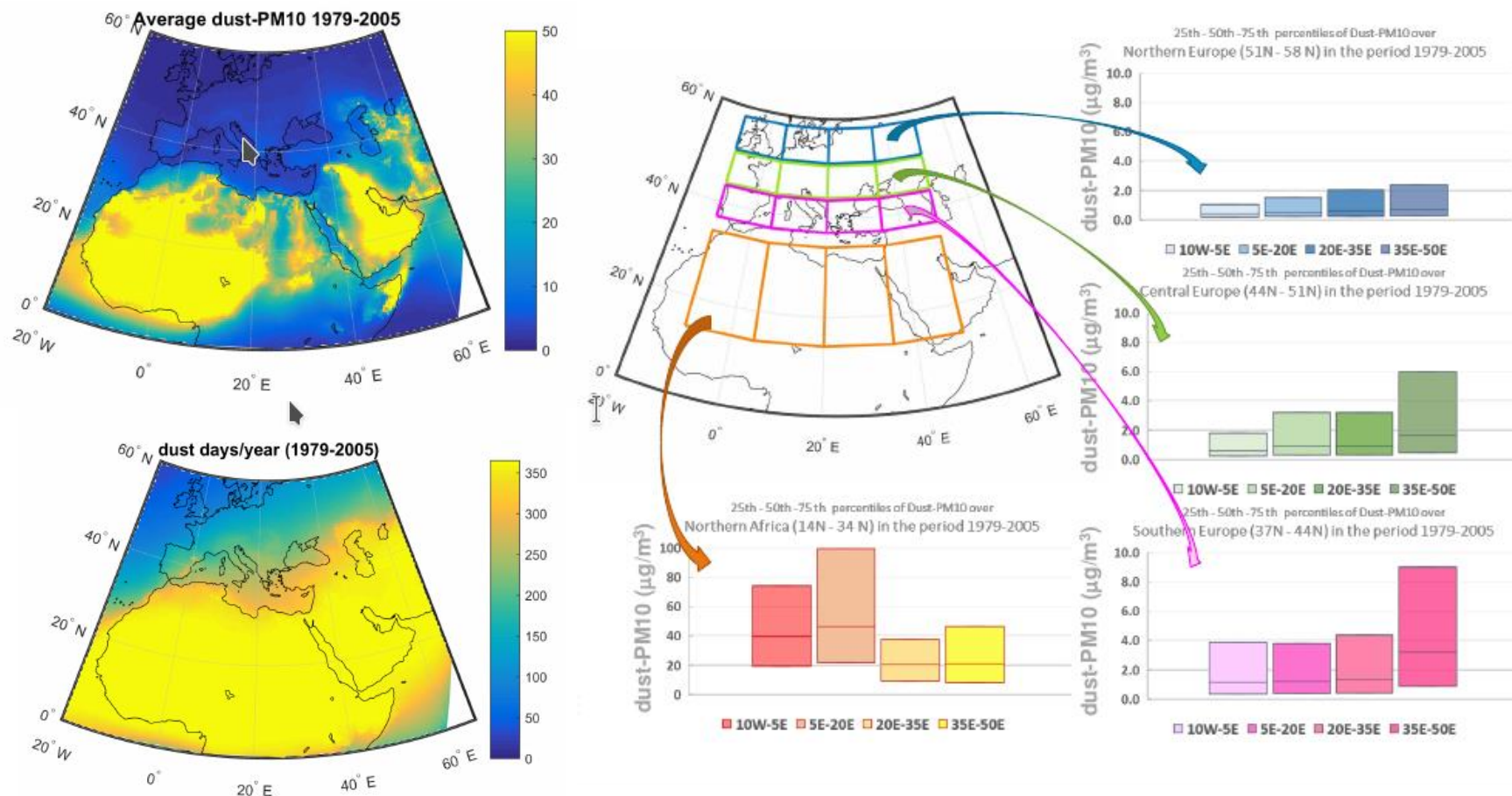
2012

IER Cinzana



(Courtesy E. Di Tomaso, BSC)

AIR QUALITY: Design of AQ Early warning systems – First tests based on NMMB-MONARCH simulations



Number of days that exceed the EU limit of PM10 (i.e 50 $\mu\text{g}/\text{m}^3$)

(Courtesy F. Barnaba, CNR-ISAC)

Summary

Dust Models

- ✓ To complement dust-related observations, filling the temporal and spatial gaps of the measurements.
- ✓ To help us to understand the dust processes and their interaction with climate, weather ecosystems and help.
- ✓ To predict the impact of dust on surface level concentrations used as **SHORT-TERM FORECASTING TOOLS** (3-5 days ahead)



**Barcelona
Supercomputing
Center**

Centro Nacional de Supercomputación



**EXCELENCIA
SEVERO
OCHOA**



AXA

Research Fund

Thanks!



European Research Area
for Climate Services

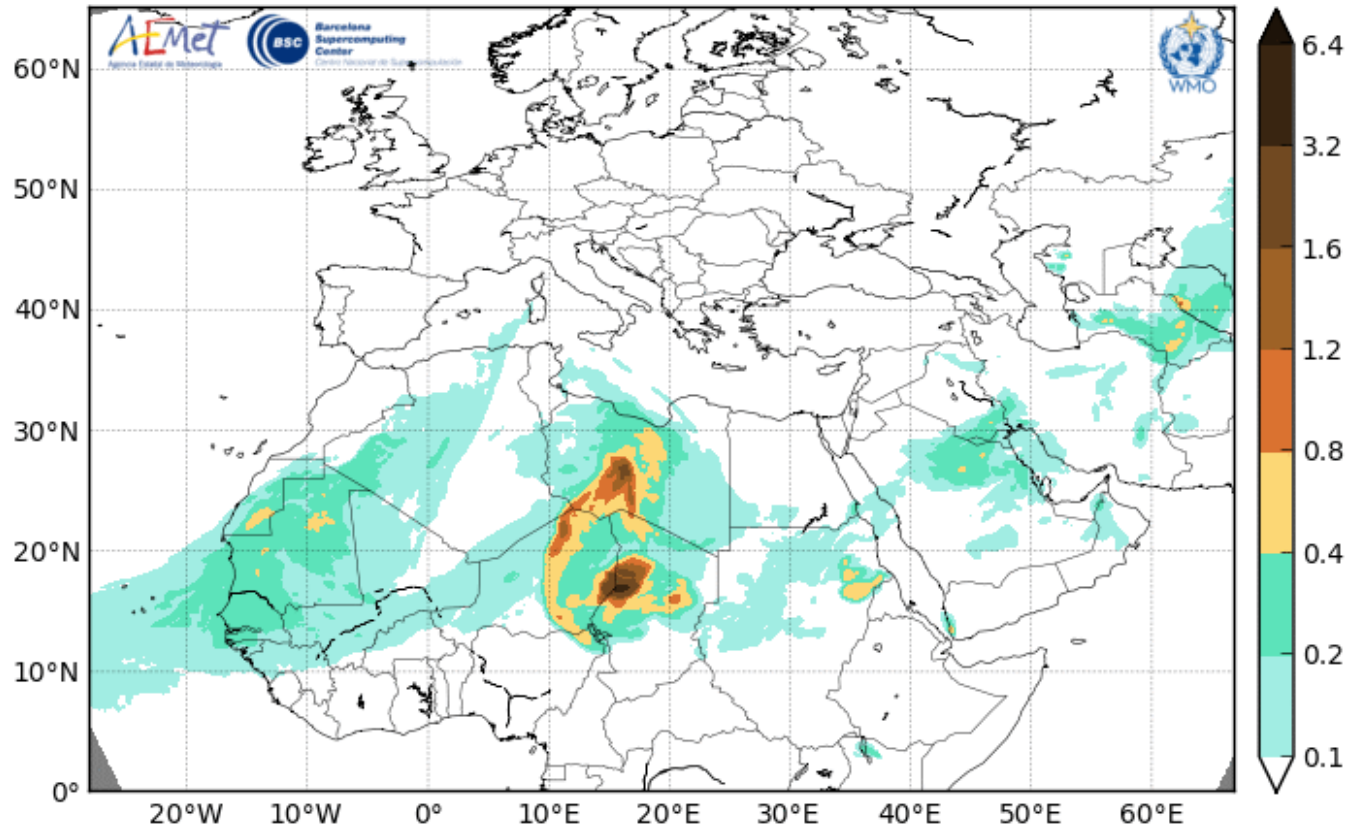
Acknowledge to AERONET, MODIS, U.K. Met Office MSG, MSG Eumetsat and EOSDIS World Viewer principal investigators and scientists for establishing and maintaining data used in the present contribution. Also special thank to all researchers, data providers and collaborators of the WMO SDS-WAS NA-ME-E Regional Node.

InDust (COST Action CA16202, www.cost-indust.eu) and ERA4CS are gratefully acknowledged. Also thanks to AXA Research Fund for funding aerosol research at the Barcelona Supercomputing Center through the AXA Chair on Sand and Dust Storms.

sara.basart@bsc.es

Barcelona Dust Forecasting Center

Barcelona Dust Forecast Center - <http://dust.aemet.es/>
NMMB/BSC-Dust Res:0.1°x0.1° Dust AOD
Run: 12h 27 OCT 2018 Valid: 12h 27 OCT 2018 (H+00)



**Barcelona
Supercomputing
Center**
Centro Nacional de Supercomputación

