

SDS-WAS products

Enric Terradellas, AEMET, Barcelona, eterradellasj@aemet.es
chair of the WMO SDS-WAS Steering Committee



Barcelona Dust Forecast Center

Log in Register

BARCELONA DUST FORECAST CENTER

WMO SDS-WAS | NA-ME-E Regional Center

HOME ABOUT US FORECAST FORECAST 10KM EVALUATION METHODS NEWS EVENTS CONTACT

NEWSLETTER

Keep up to date with our activities!

Subscribe

SEARCH

HOME

- > About us
- > Forecast
- > Forecast 10km
- > Evaluation
- > Methods
- > News
- > Events
- > Contact

LATEST NEWS

[Establishing a WMO SDS-WAS Regional Node for West Asia](#)

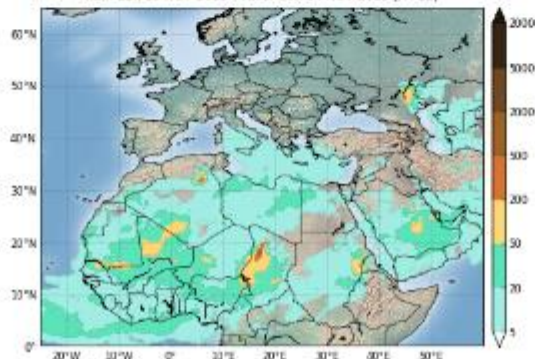
Training events in Muscat, Oman

Dust-related training events organized by the Regional Center for Northern Africa, Middle East and Europe of WMO SDS-WAS

[Read More](#)



Barcelona Dust Forecast Center
NMMB/BSC-Dust Res: 0.1°x0.1° Dust Surface Conc. (µg/m³)
Run: 12h 13 NOV 2013 Valid: 00h 14 NOV 2013 (H+12)



Dust forecast

Latest dust forecast for Northern Africa, Middle East and Europe

[Check it here](#)

<https://dust.aemet.es>
dust.aemet.es

Barcelona Dust Forecast Center

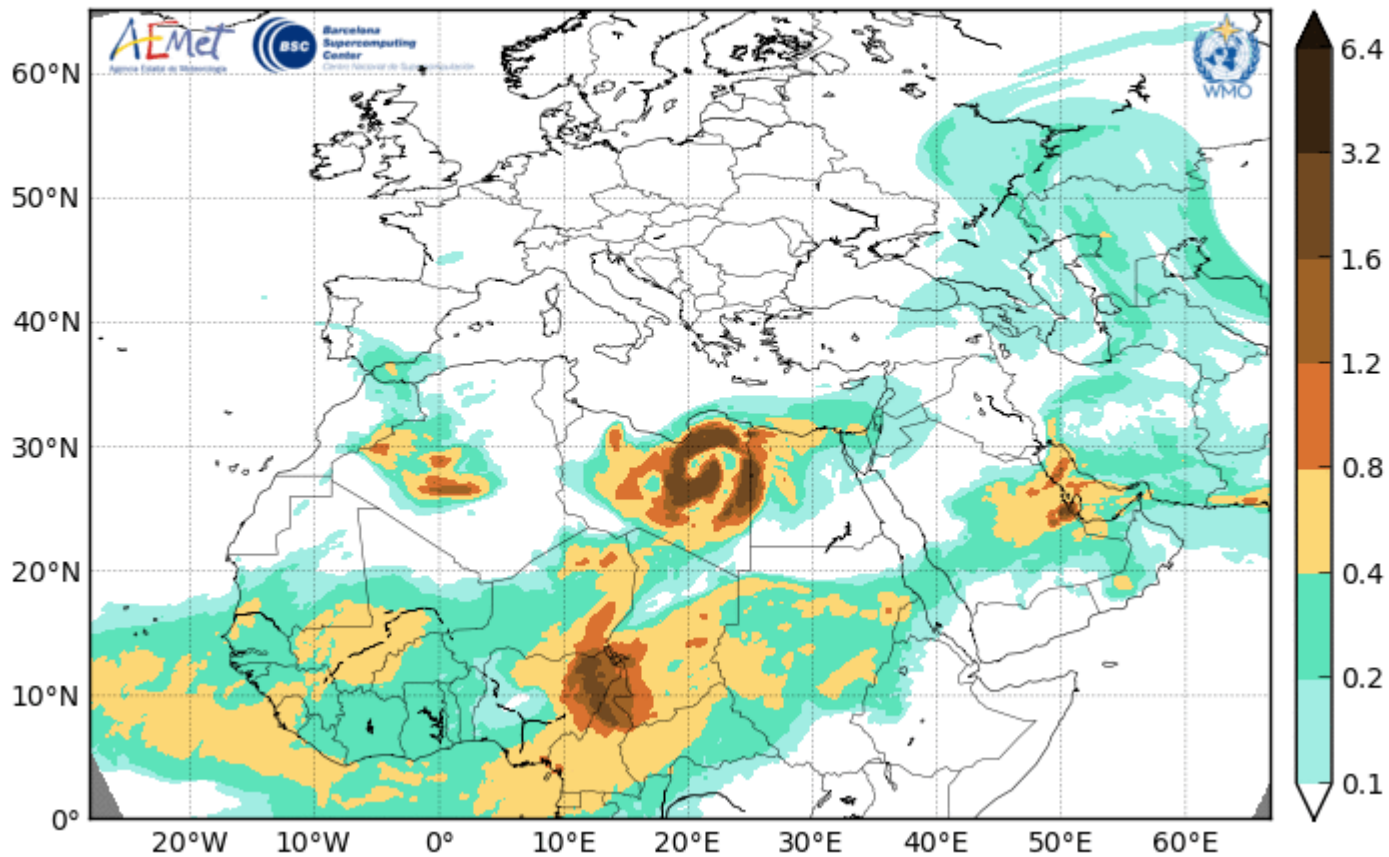
FORECAST

Barcelona Dust Forecast Center

Barcelona Dust Forecast Center - <http://dust.aemet.es/>

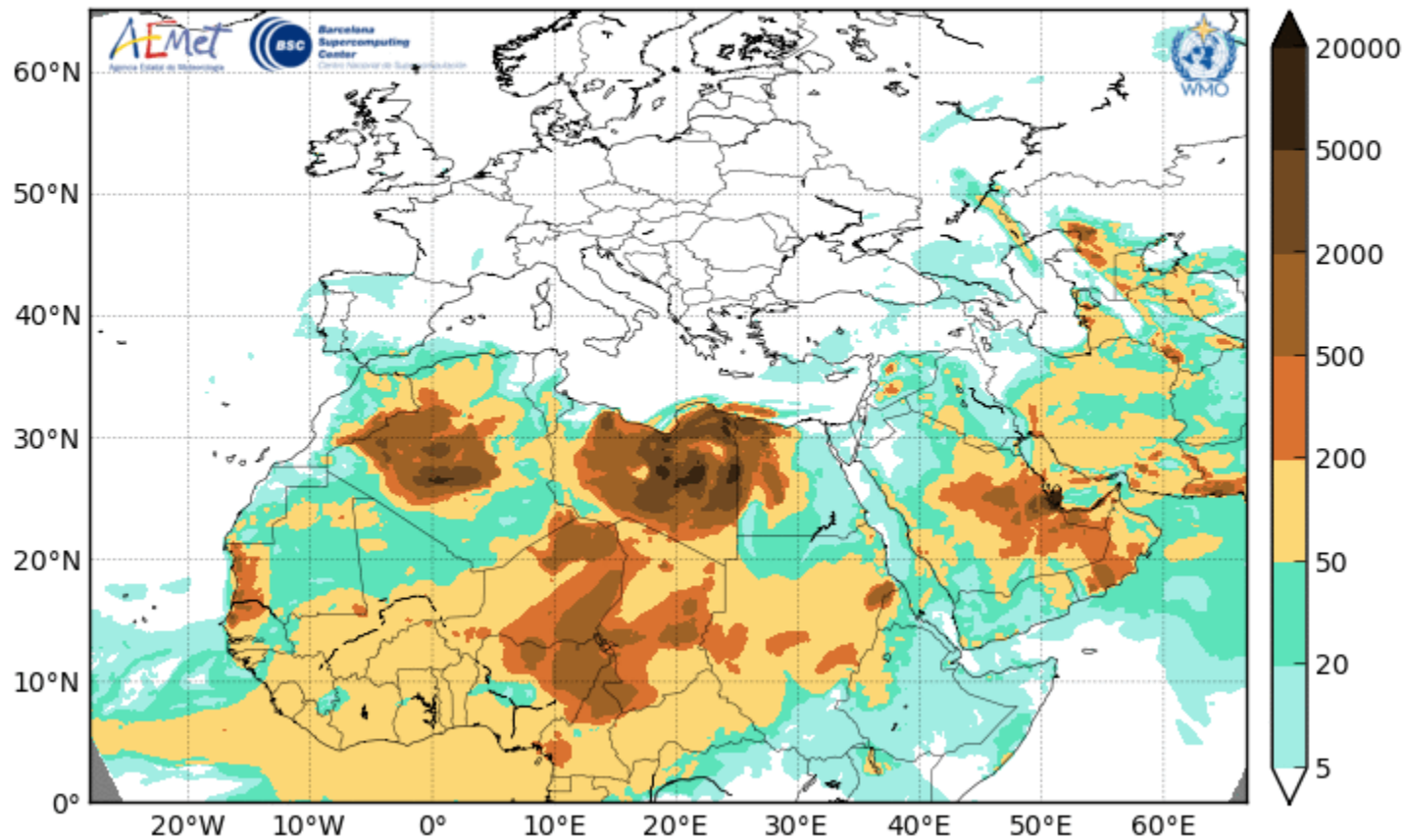
NMMB/BSC-Dust Res:0.1°x0.1° Dust AOD

Run: 12h 17 MAR 2017 Valid: 12h 17 MAR 2017 (H+00)



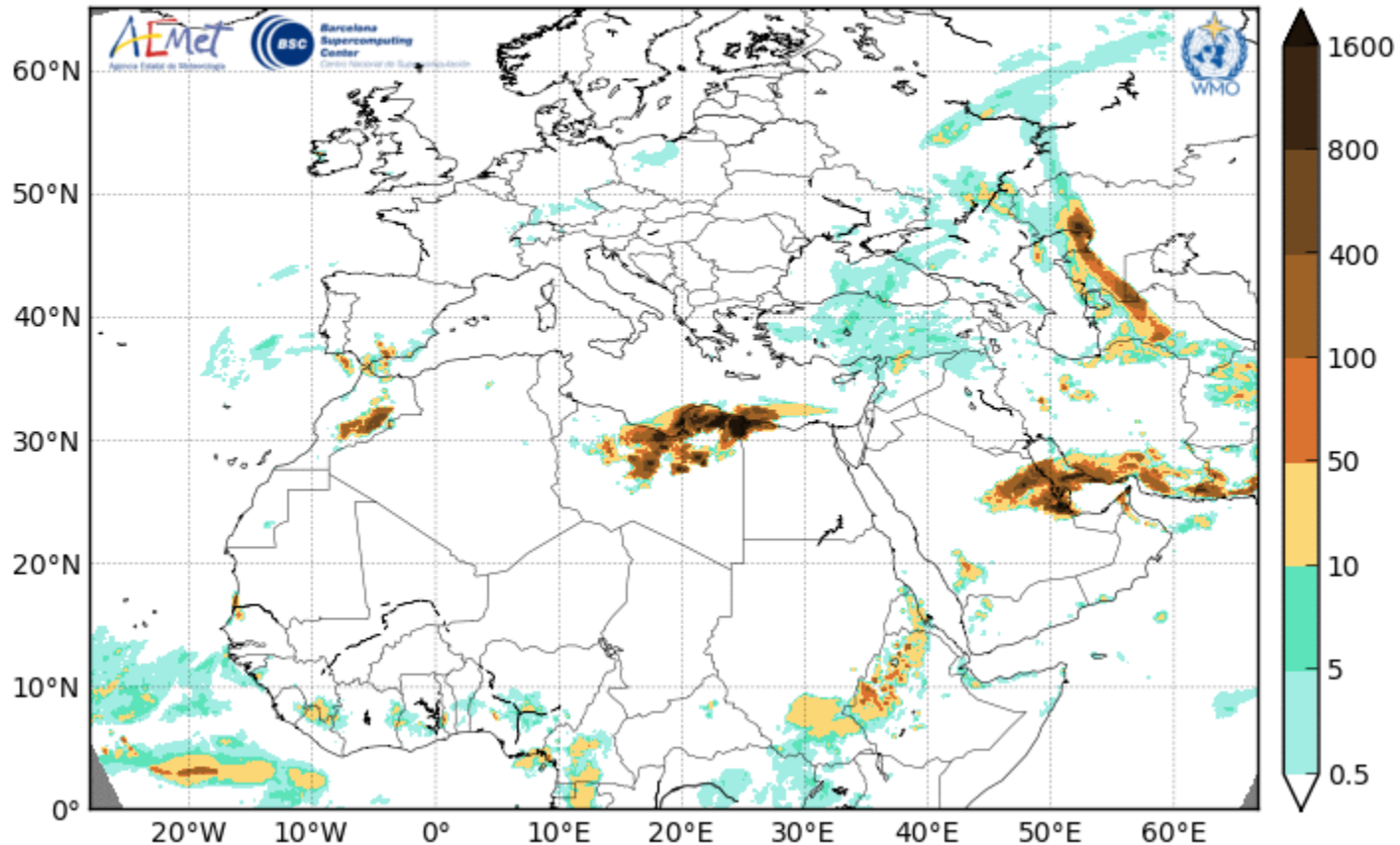
Barcelona Dust Forecast Center

Barcelona Dust Forecast Center - <http://dust.aemet.es/>
NMMB/BSC-Dust Res:0.1°x0.1° Dust Surface Conc. ($\mu\text{g}/\text{m}^3$)
Run: 12h 17 MAR 2017 Valid: 12h 17 MAR 2017 (H+00)



Barcelona Dust Forecast Center

Barcelona Dust Forecast Center - <http://dust.aemet.es/>
NMMB/BSC-Dust Res:0.1°x0.1° 3h Acc. Dust Wet Depos. (mg/m²)
Run: 12h 17 MAR 2017 Valid: 12h 17 MAR 2017 (H+00)



SDS-WAS Regional Center NAMEE

The screenshot shows the homepage of the Northern Africa-Middle East-Europe (NA-ME-E) Regional Center for the WMO Sand and Dust Storm Warning Advisory and Assessment System (SDS-WAS). The header includes the WMO logo, the center's name, and a navigation menu with links for Home, About Us, Forecast & Products, Projects & Research, Materials, News, Events, and Contact Us. A 'Log in' button is also present in the top right.

The main content area features a 'You are Here: Home' breadcrumb, the center's title, and a byline for Francisco Benito. Below this are several sections:

- Outstanding:** A list of key documents and reports, including 'Guidance for forecasters', '11 lectures on atmospheric mineral dust', 'Forecast evaluation', and 'Compared dust forecasts'.
- Subscribe to the Public Newsletter:** A form with fields for 'Full Name' and 'Your email', and a 'Subscribe' button. A note states: 'To be informed about our activities, news and events related to dust. Frequency is almost monthly.'
- Latest News:** A list of recent news items with dates, such as 'Back trajectories are now available' (Sep 04, 2012), 'Comparison of dust models' (Aug 29, 2012), and 'Upcoming Events' including the European Aerosol Conference SAC-2012 (Sep 02-07, 2012) and the 2012 EUMETSAT Meteorological Satellite Conference (Sep 02-07, 2012).
- Dust forecasts:** Two sub-sections: 'Compared Dust Forecasts' showing a map of dust concentration over the region, and 'Forecast Evaluation' showing a line graph of dust concentration over time.
- Dust observations:** A section containing a bar chart of dust observations and a satellite image of the Earth showing dust plumes.

A search bar is located on the left side of the page.

<https://sds-was.aemet.es>
sdswas@aemet.es

SDS-WAS Regional Center NAMEE

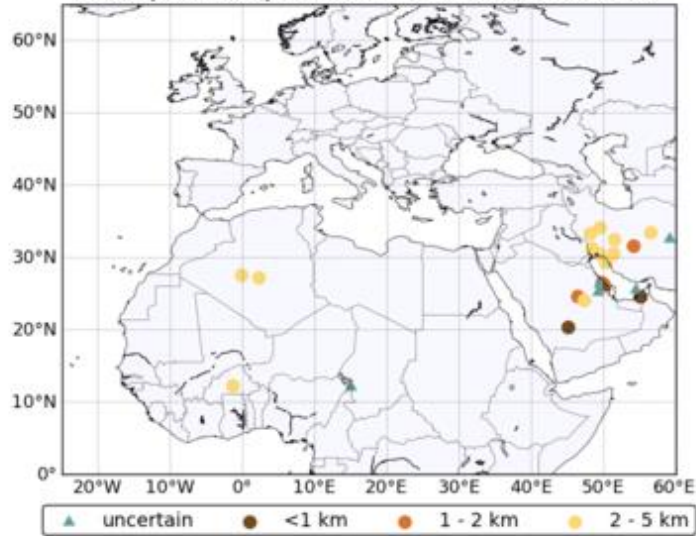
FORECAST & PRODUCTS

DUST OBSERVATIONS

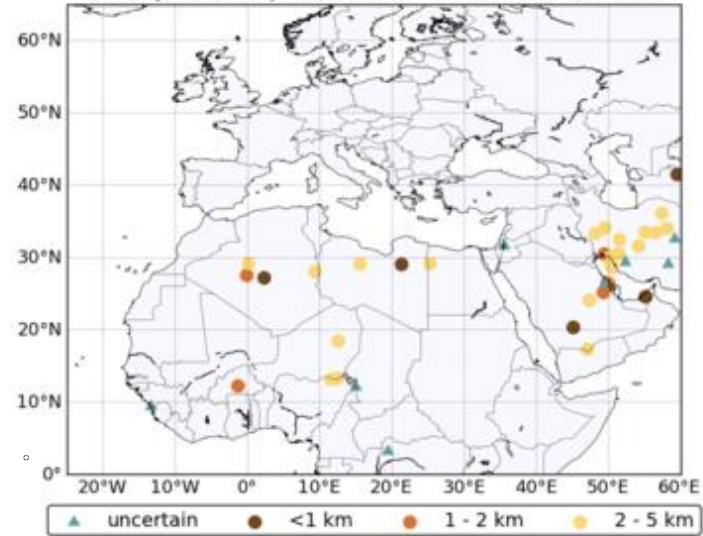
Visibility

SDS-WAS Regional Center NAMEE

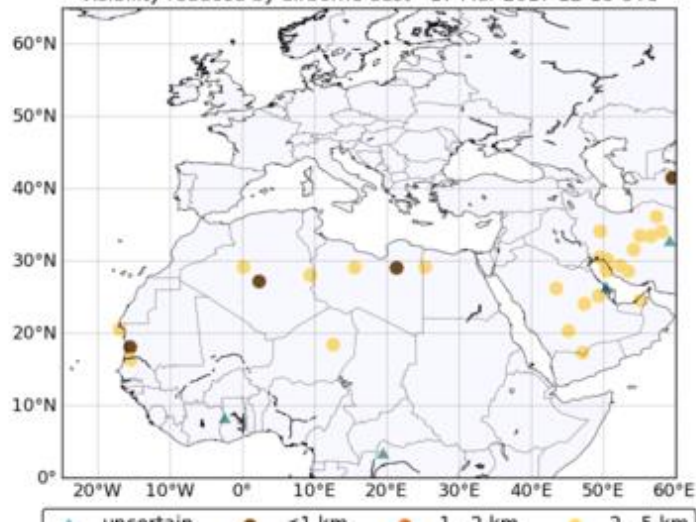
WMO SDS-WAS N.Africa-Middle East-Europe RC
Visibility reduced by airborne dust - 17 Mar 2017 00-06 UTC



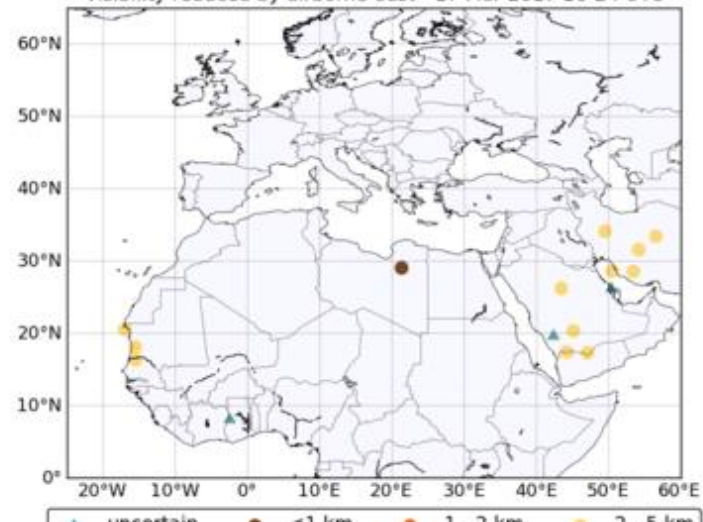
WMO SDS-WAS N.Africa-Middle East-Europe RC
Visibility reduced by airborne dust - 17 Mar 2017 06-12 UTC



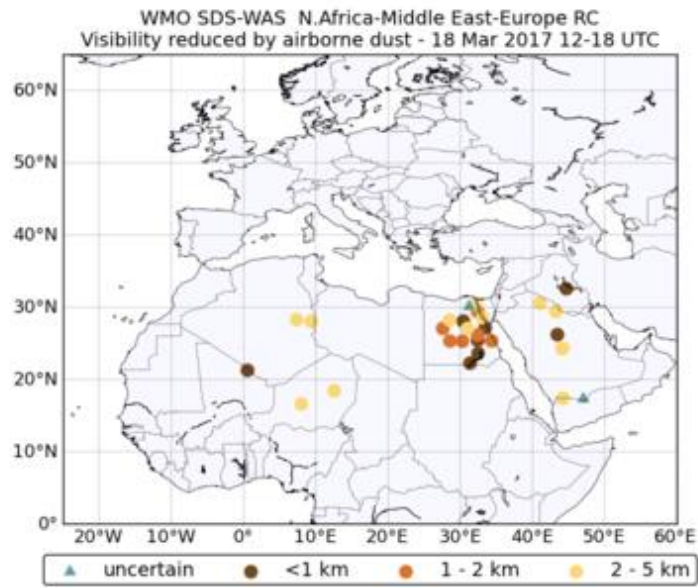
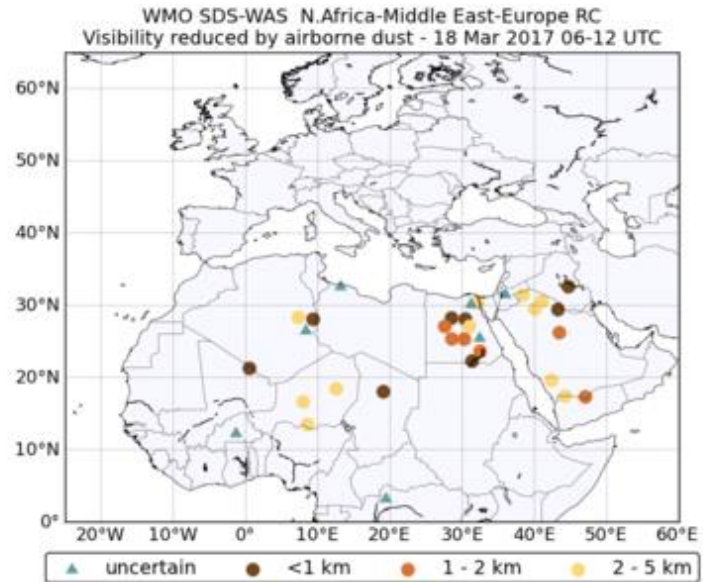
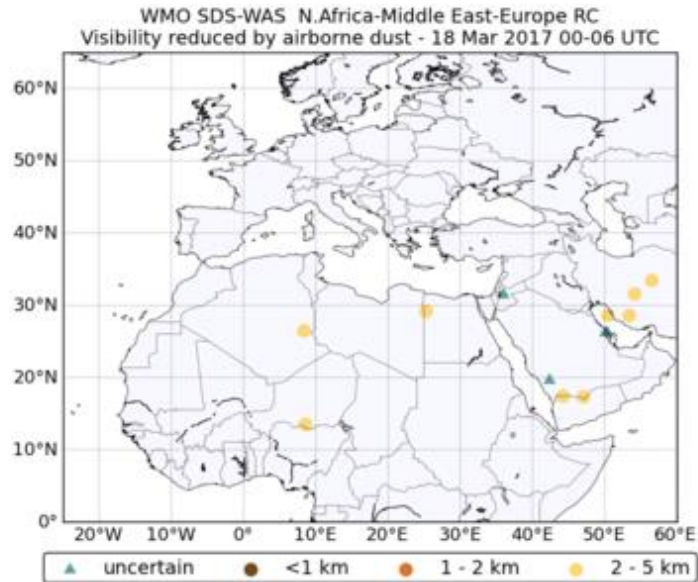
WMO SDS-WAS N.Africa-Middle East-Europe RC
Visibility reduced by airborne dust - 17 Mar 2017 12-18 UTC



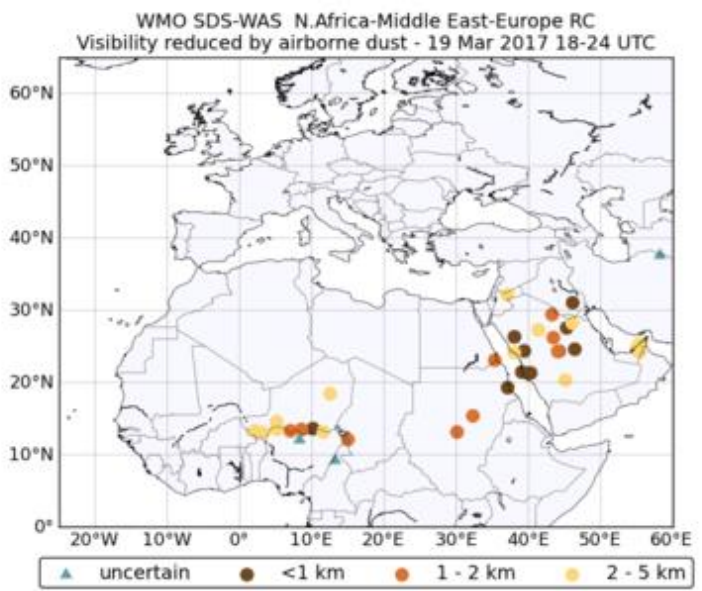
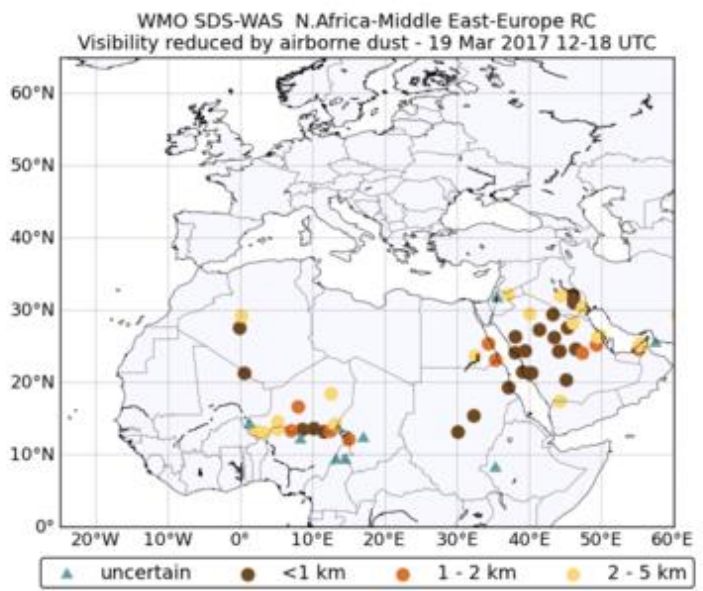
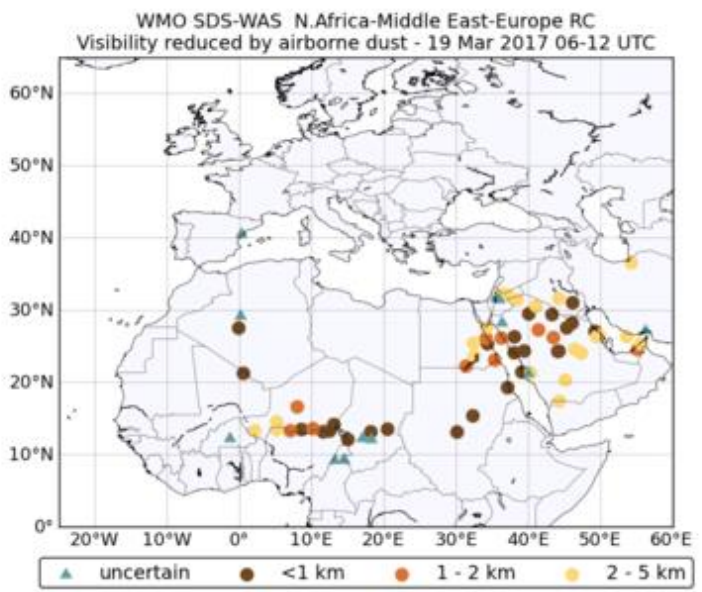
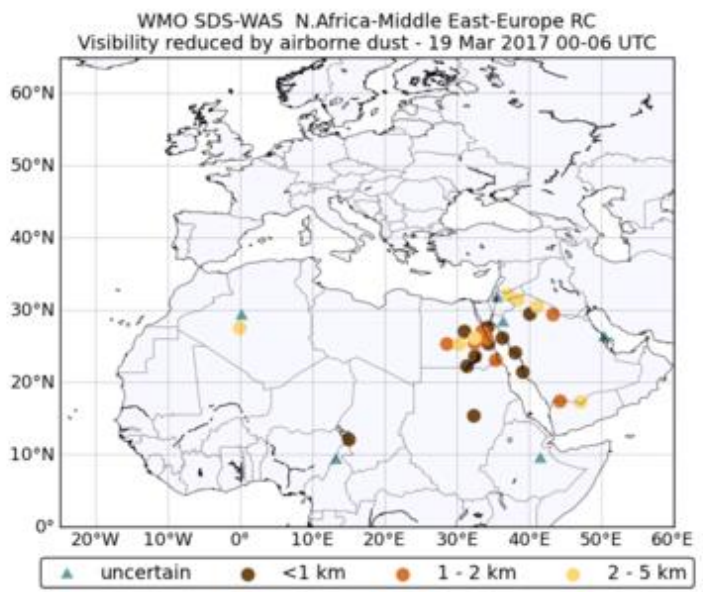
WMO SDS-WAS N.Africa-Middle East-Europe RC
Visibility reduced by airborne dust - 17 Mar 2017 18-24 UTC



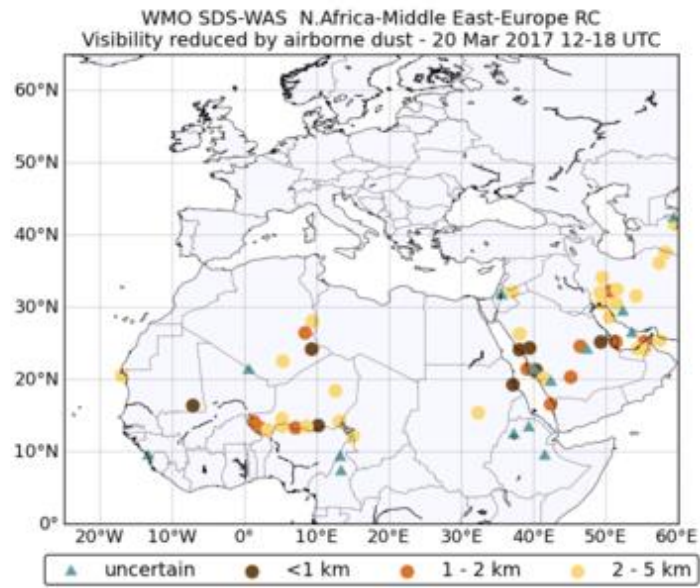
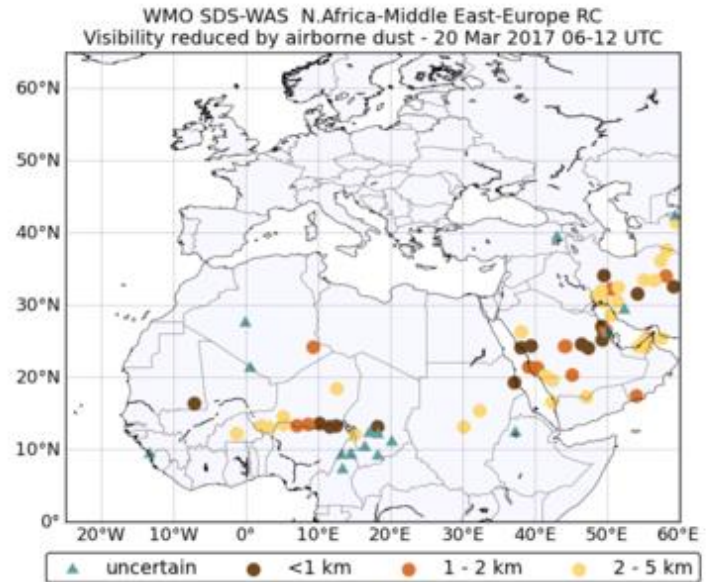
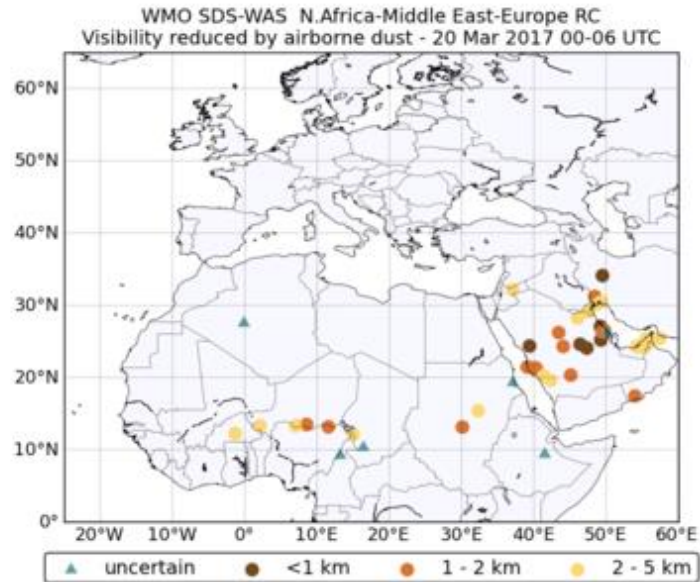
SDS-WAS Regional Center NAMEE



SDS-WAS Regional Center NAMEE



SDS-WAS Regional Center NAMEE



SDS-WAS Regional Center NAMEE

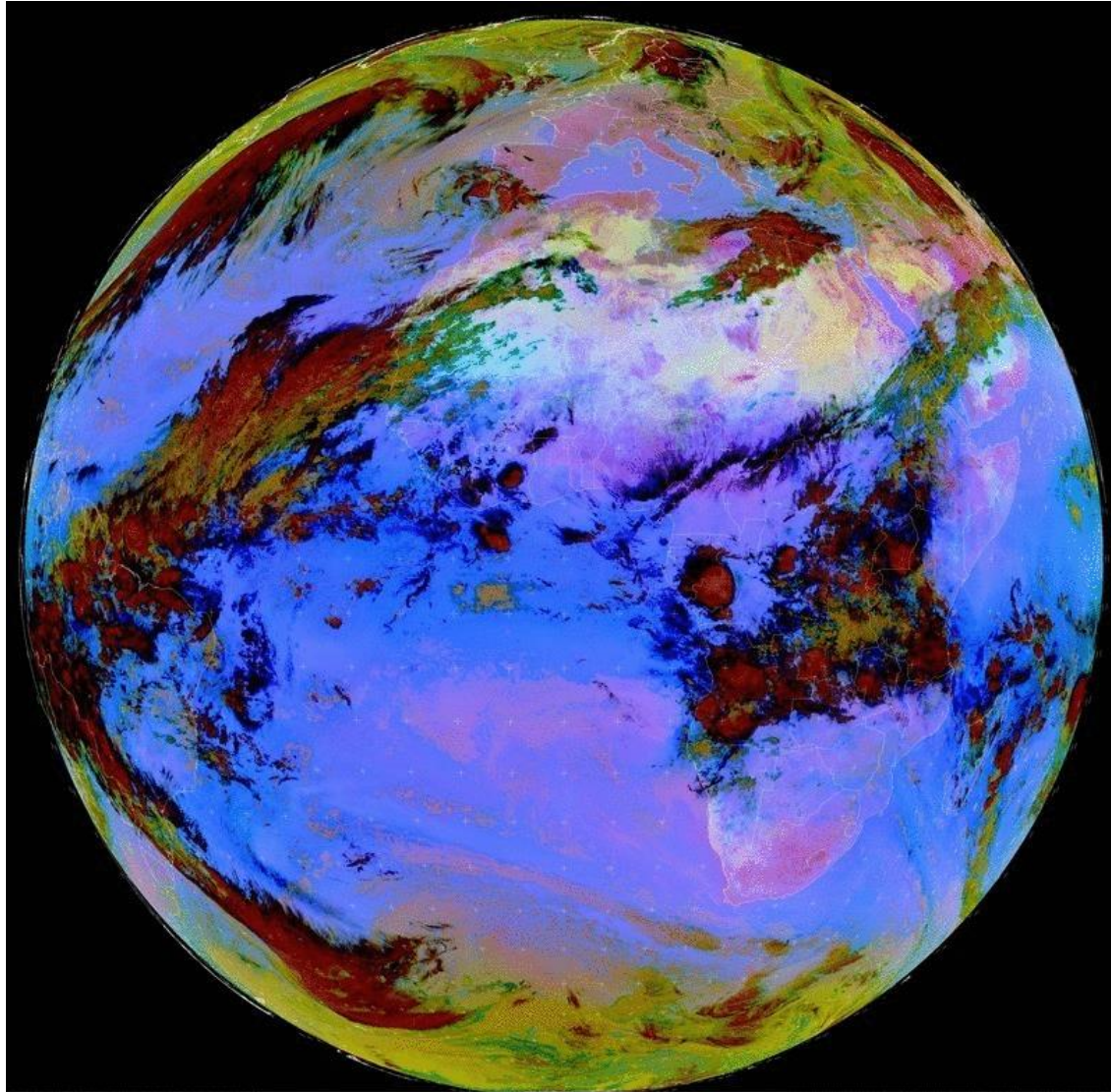
FORECAST & PRODUCTS

DUST OBSERVATIONS

MSG-EUMETSAT

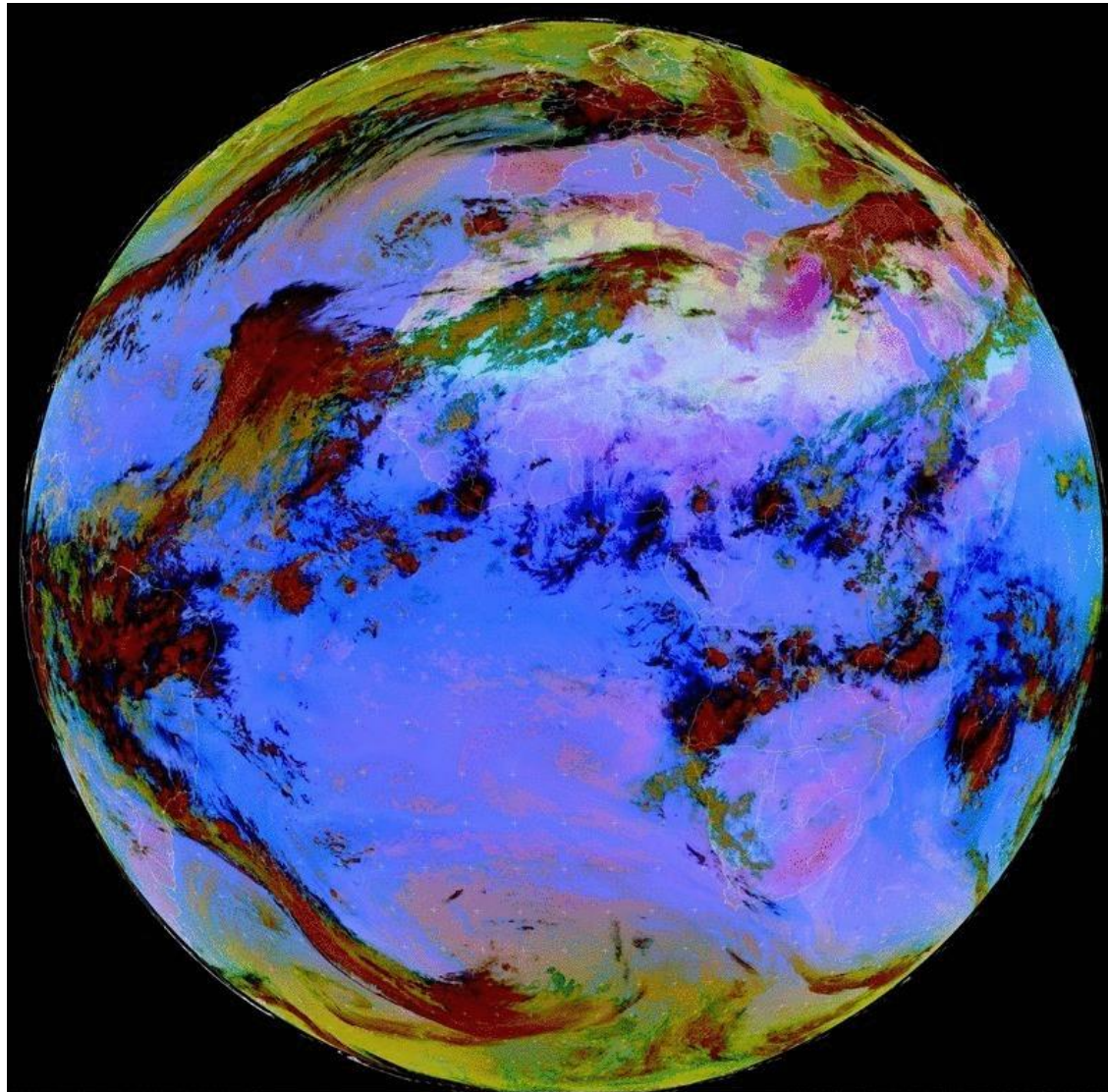
SDS-WAS Regional Center NAMEE

17 Mar 2017



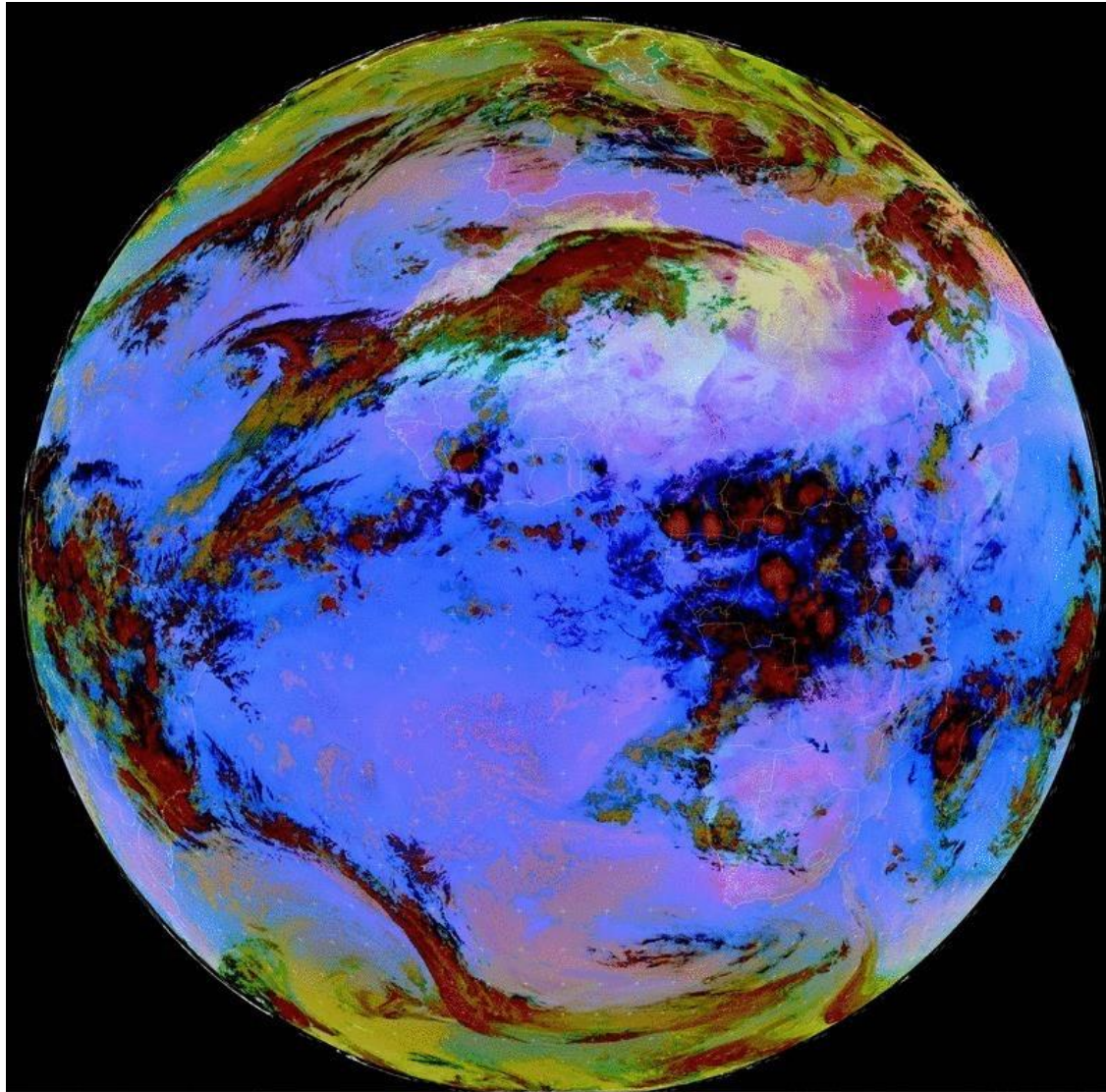
SDS-WAS Regional Center NAMEE

18 Mar 2017



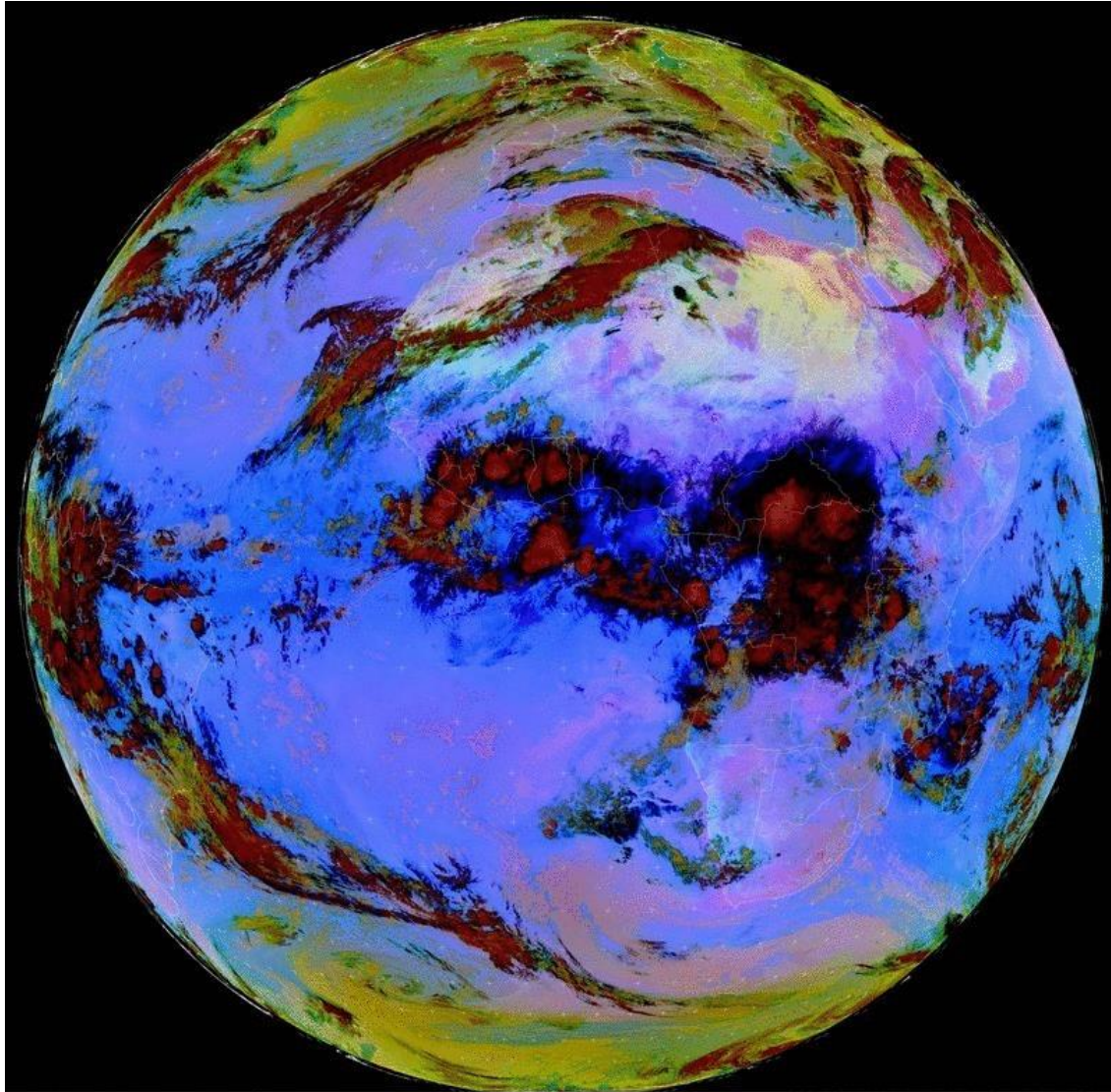
SDS-WAS Regional Center NAMEE

19 Mar 2017



SDS-WAS Regional Center NAMEE

20 Mar 2017



SDS-WAS Regional Center NAMEE

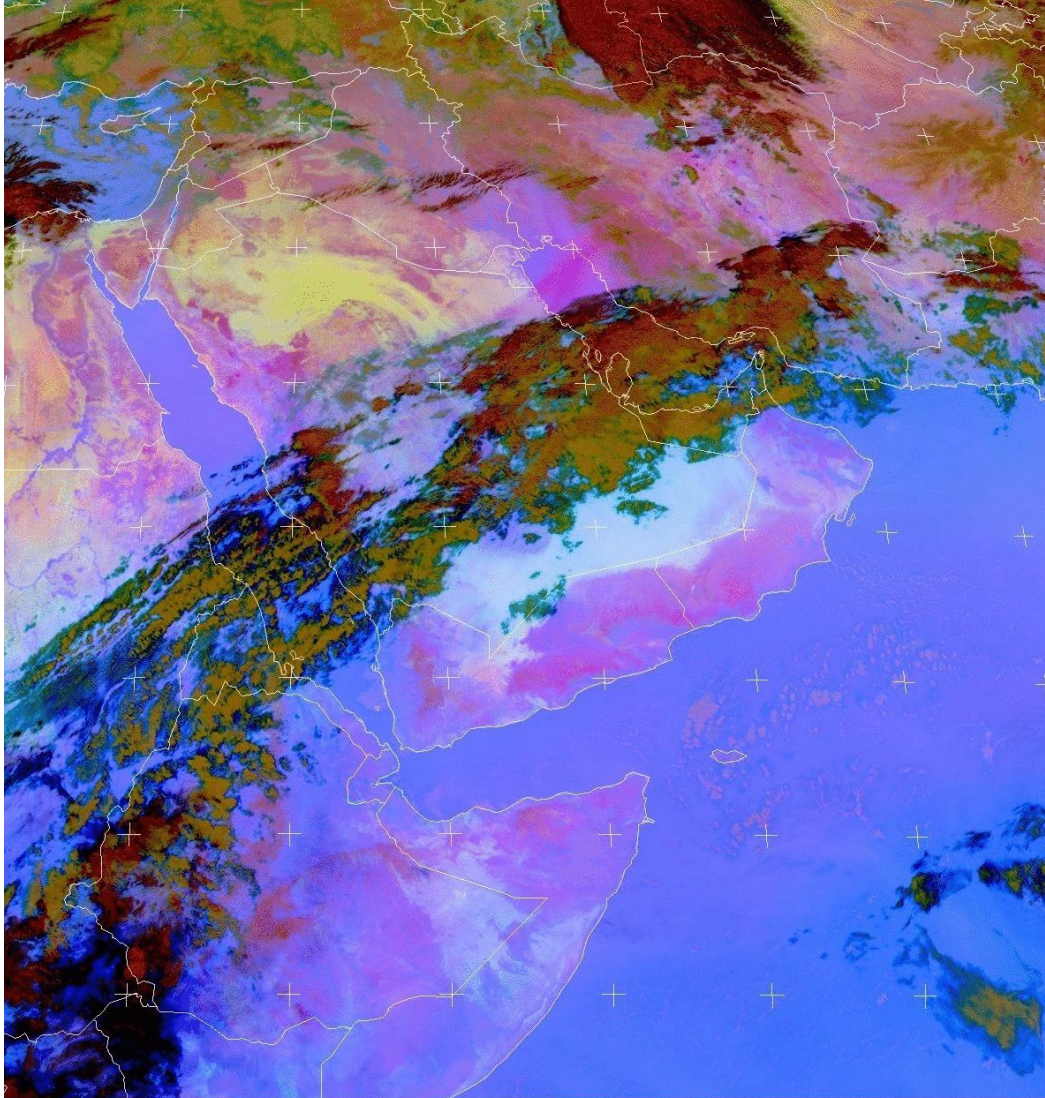
FORECAST & PRODUCTS

DUST OBSERVATIONS

MSG-EUMETSAT Middle East

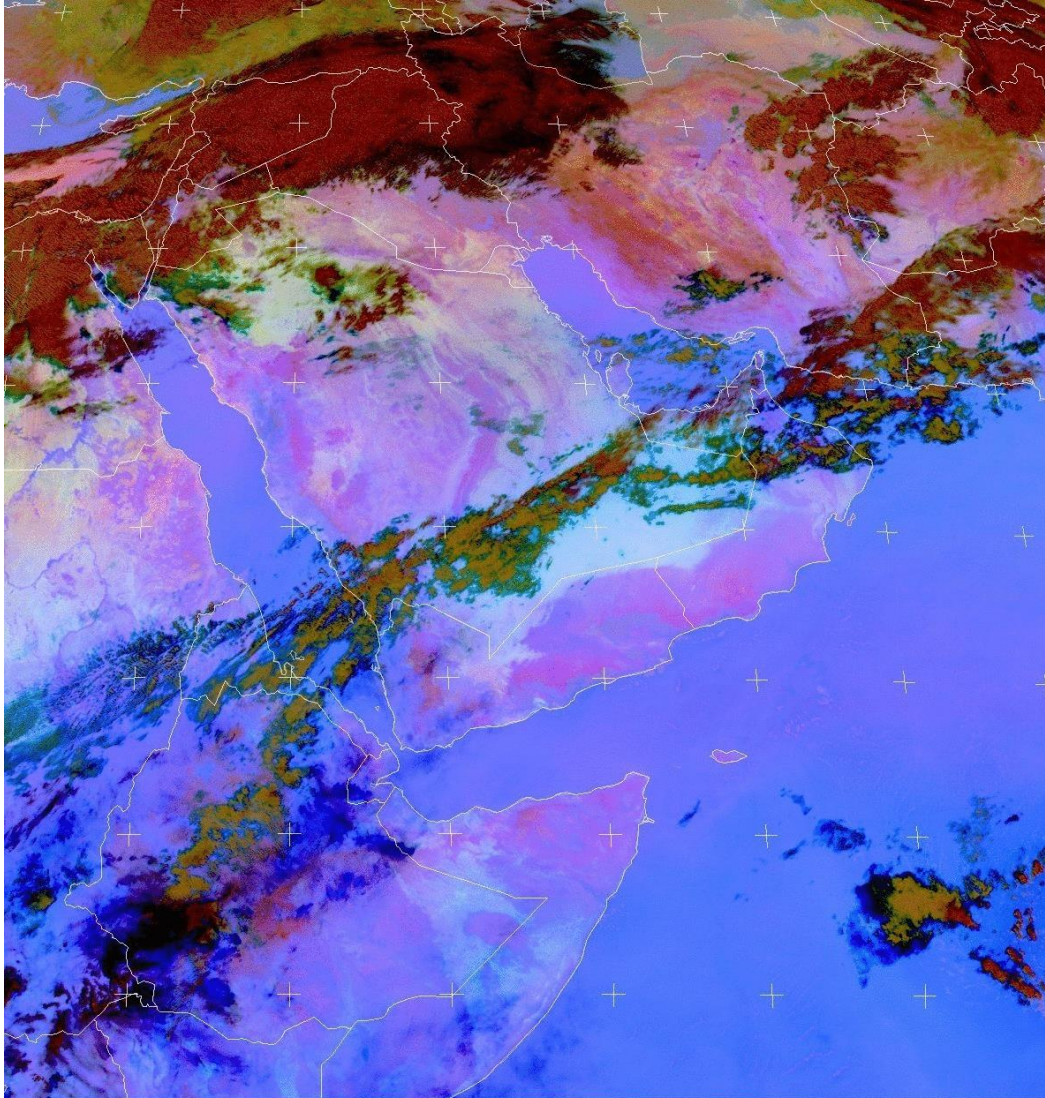
SDS-WAS Regional Center NAMEE

17 Mar 2017



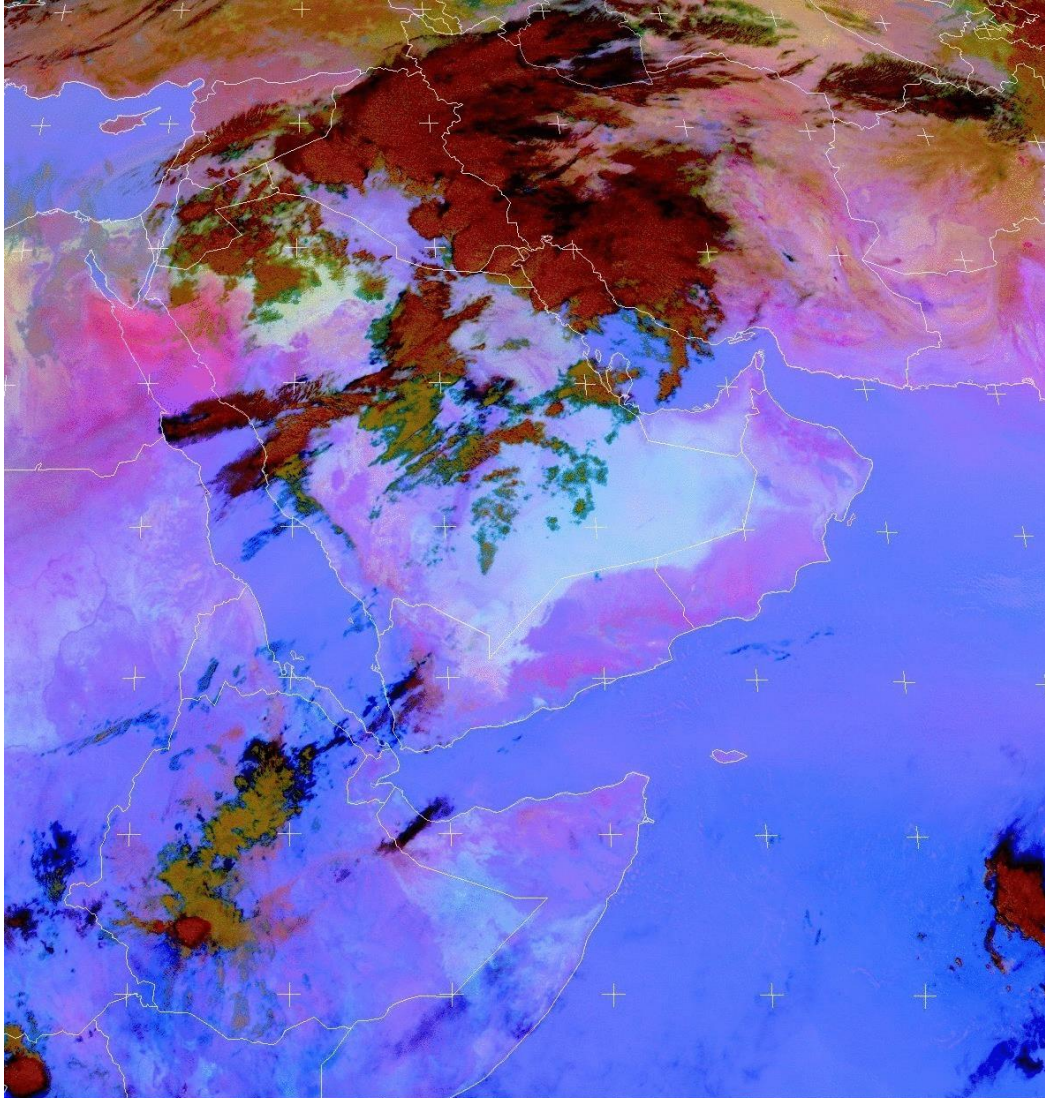
SDS-WAS Regional Center NAMEE

18 Mar 2017



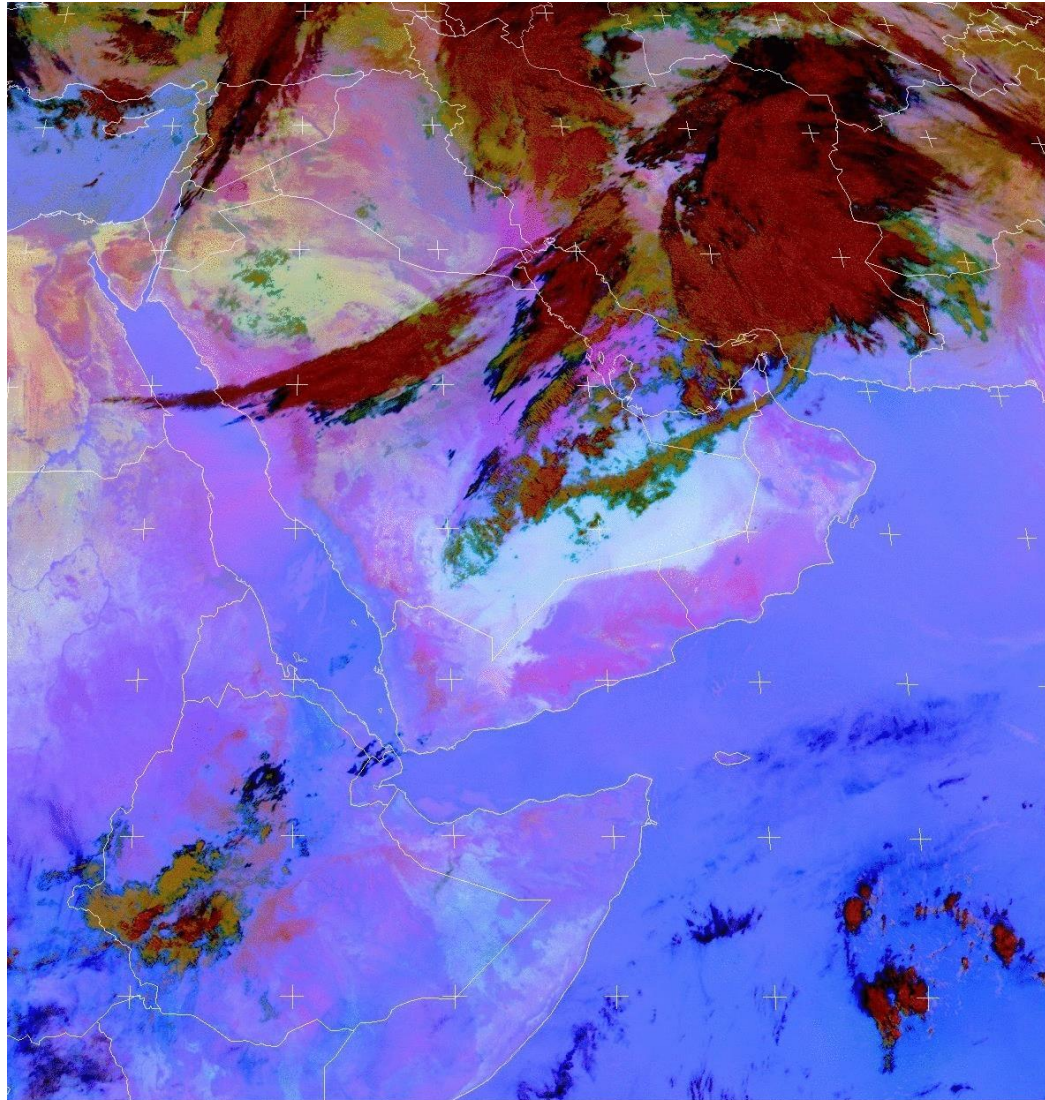
SDS-WAS Regional Center NAMEE

19 Mar 2017



SDS-WAS Regional Center NAMEE

20 Mar 2017



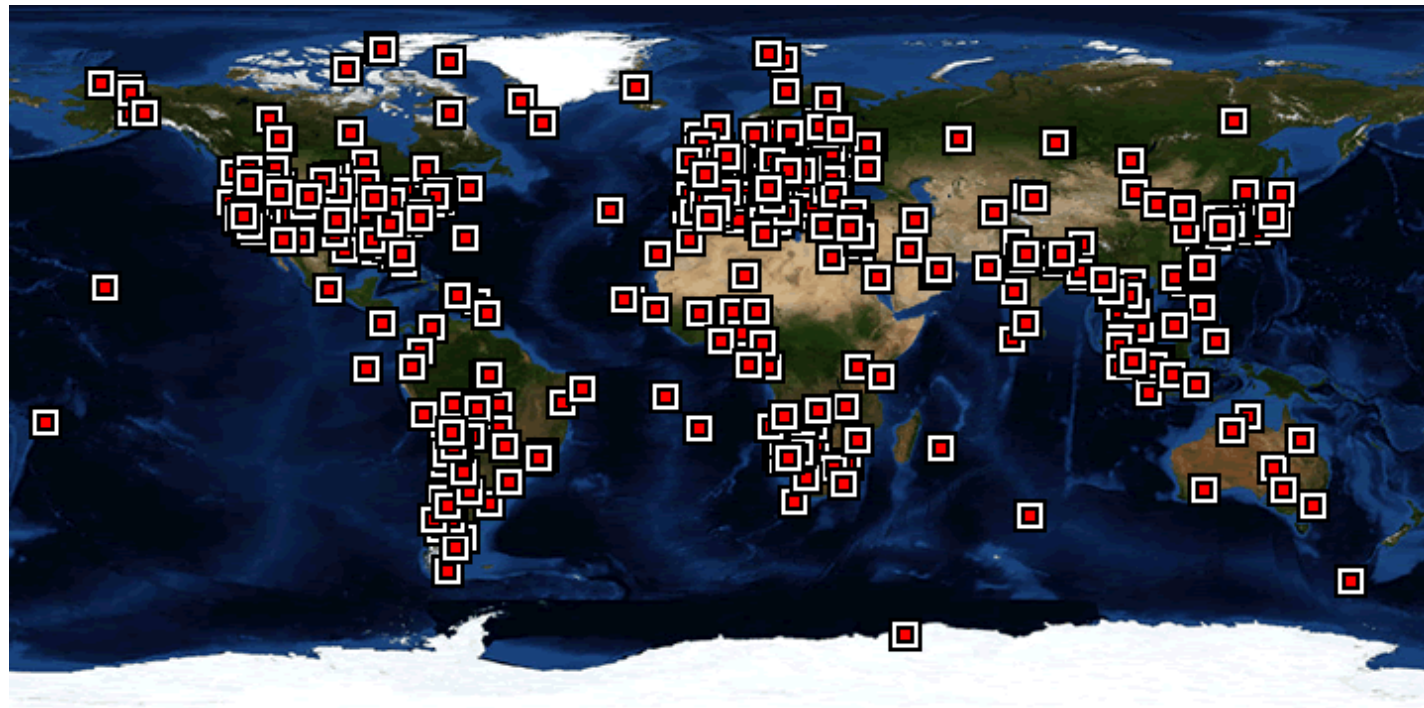
SDS-WAS Regional Center NAMEE

FORECAST & PRODUCTS

DUST OBSERVATIONS

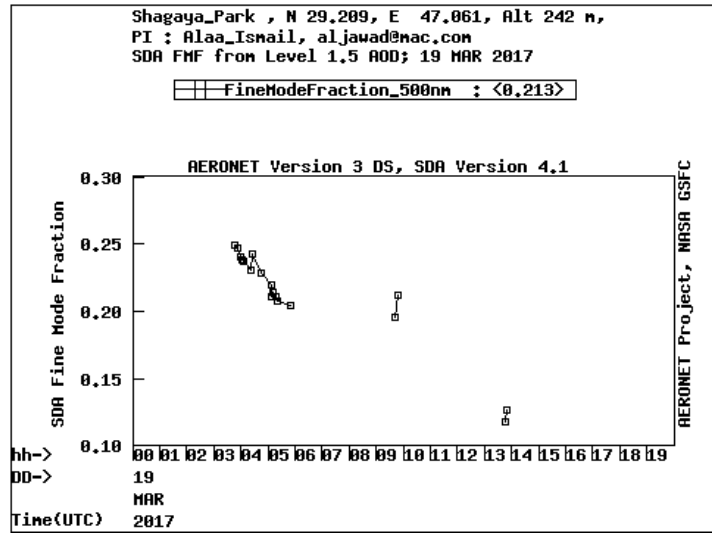
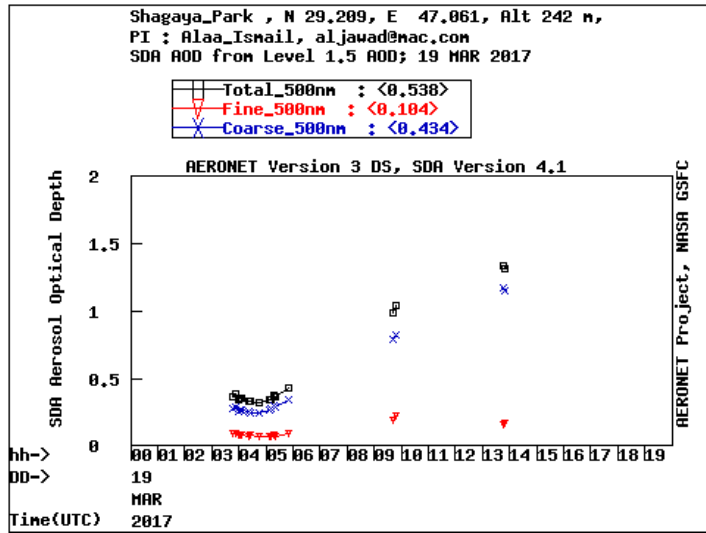
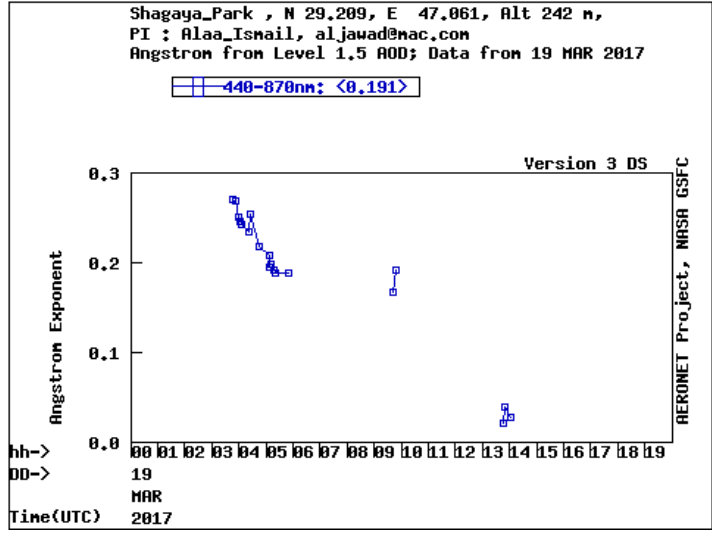
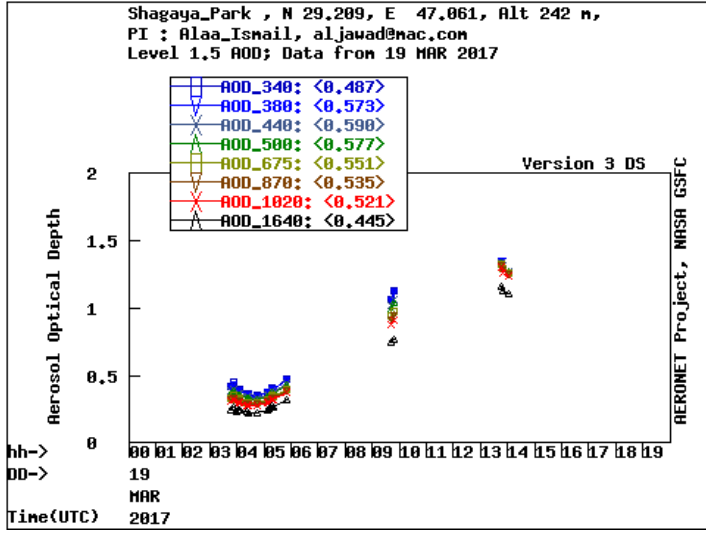
AERONET

SDS-WAS Regional Center NAMEE

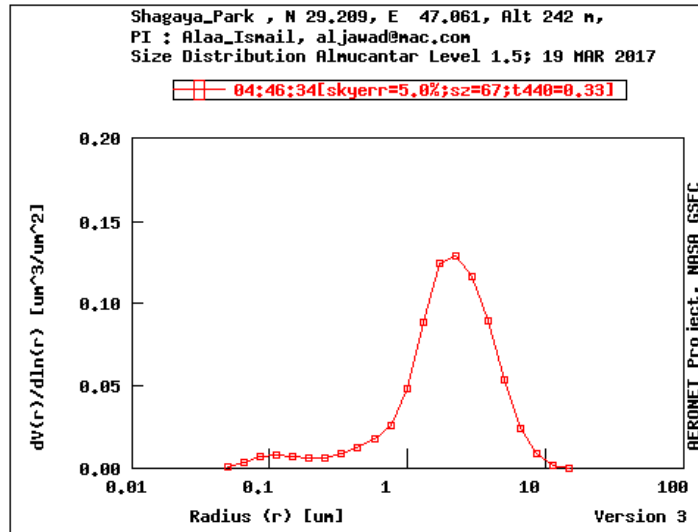


SDS-WAS Regional Center NAMEE

Shagaya Park
(Kuwait)
19 Mar 2017



SDS-WAS Regional Center NAMEE



SDS-WAS Regional Center NAMEE

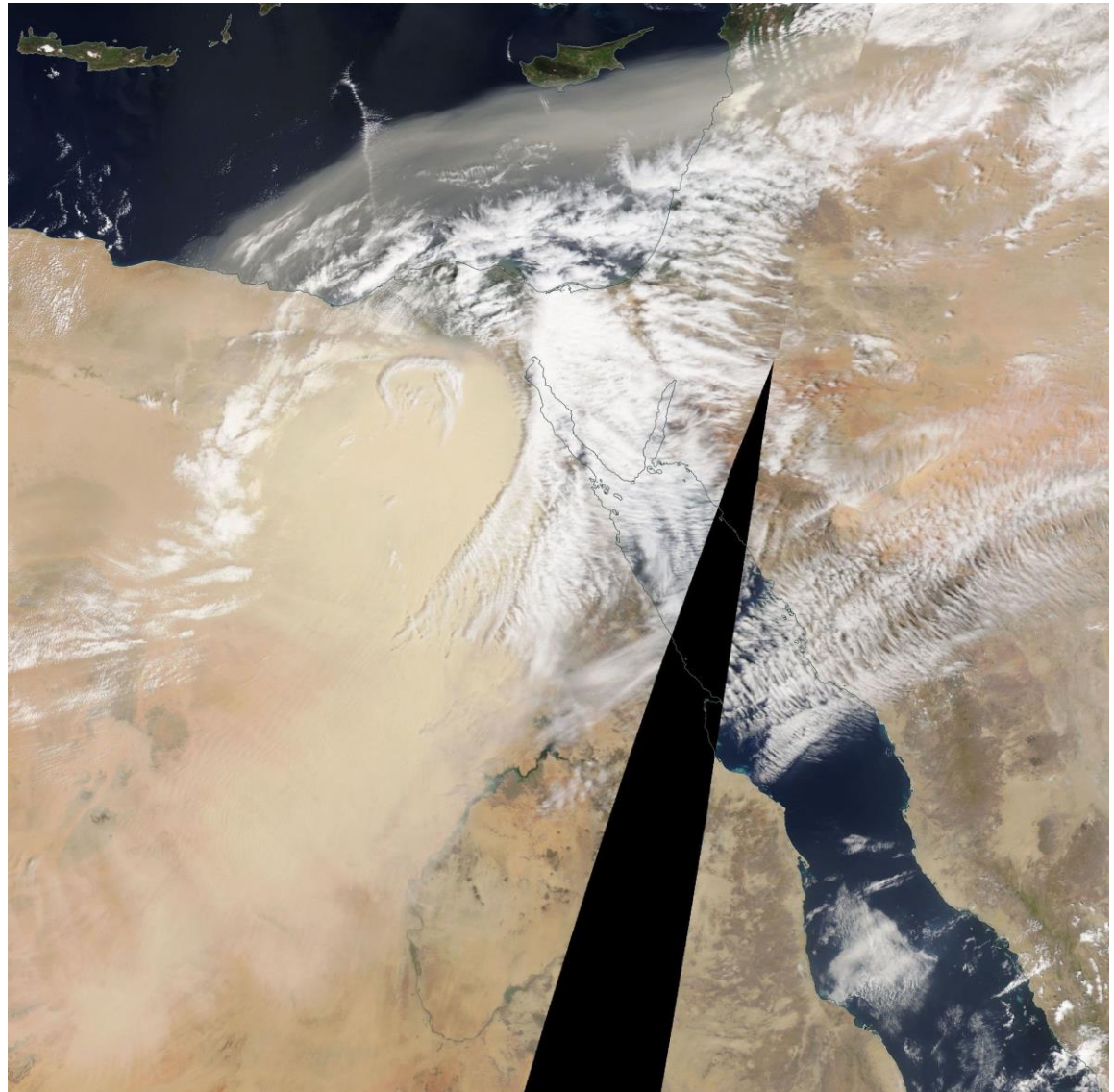
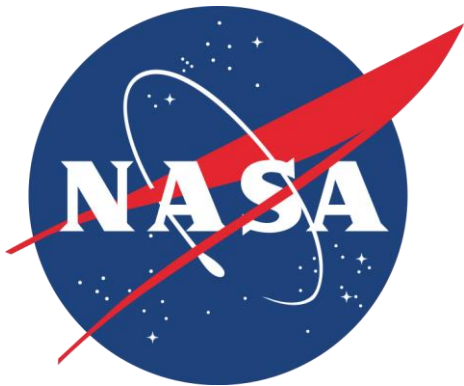
FORECAST & PRODUCTS

DUST OBSERVATIONS

MODIS

SDS-WAS Regional Center NAMEE

Terra/MODIS
18 Mar 2017



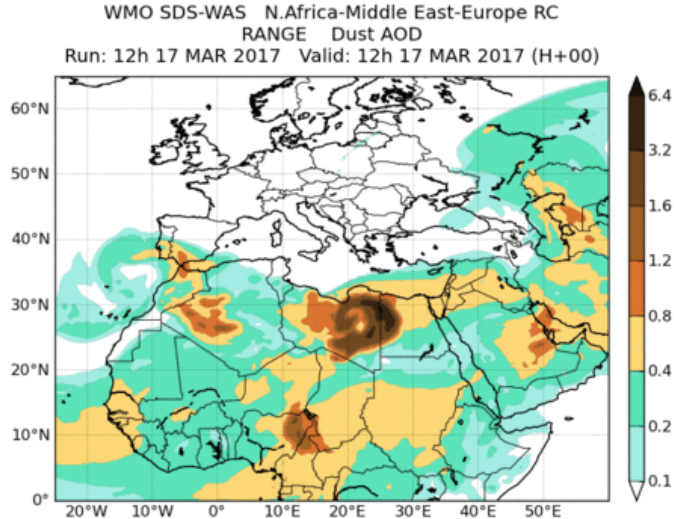
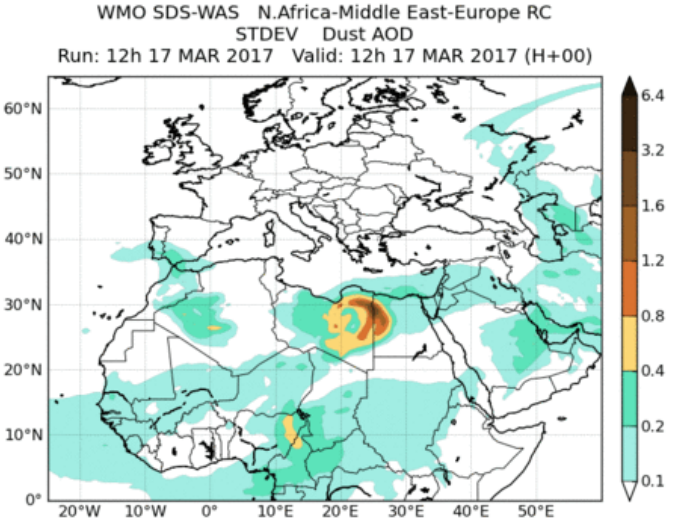
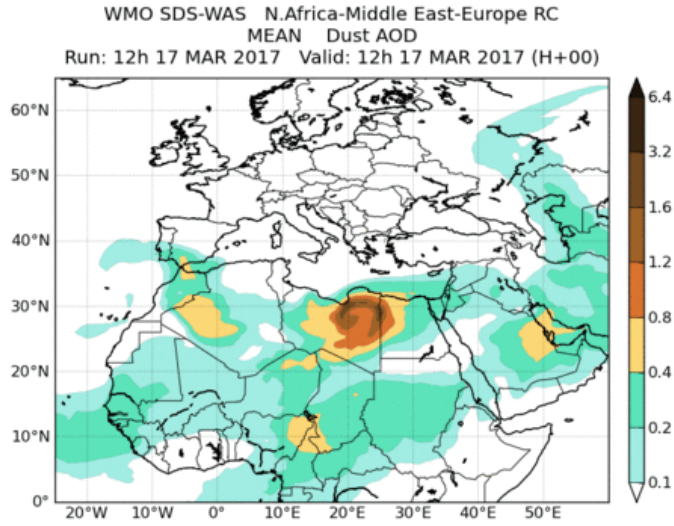
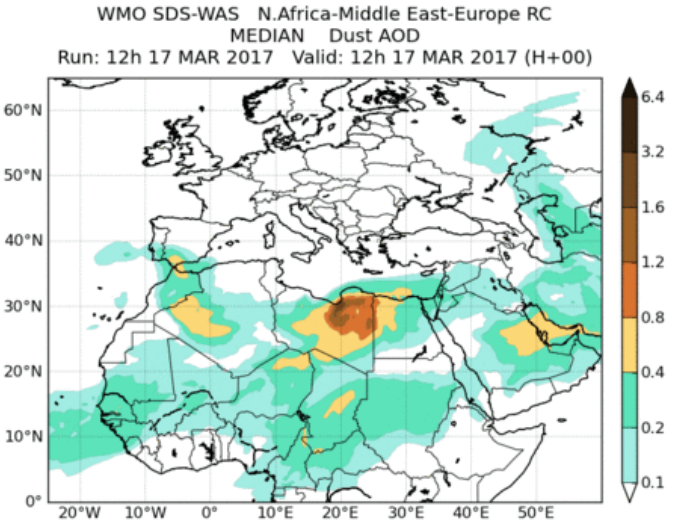
SDS-WAS Regional Center NAMEE

FORECAST & PRODUCTS

DUST FORECASTS

Ensemble Forecast

SDS-WAS Regional Center NAMEE



SDS-WAS Regional Center NAMEE

FORECAST & PRODUCTS

DUST FORECASTS

Forecast Comparison

SDS-WAS Regional Center NAMEE

