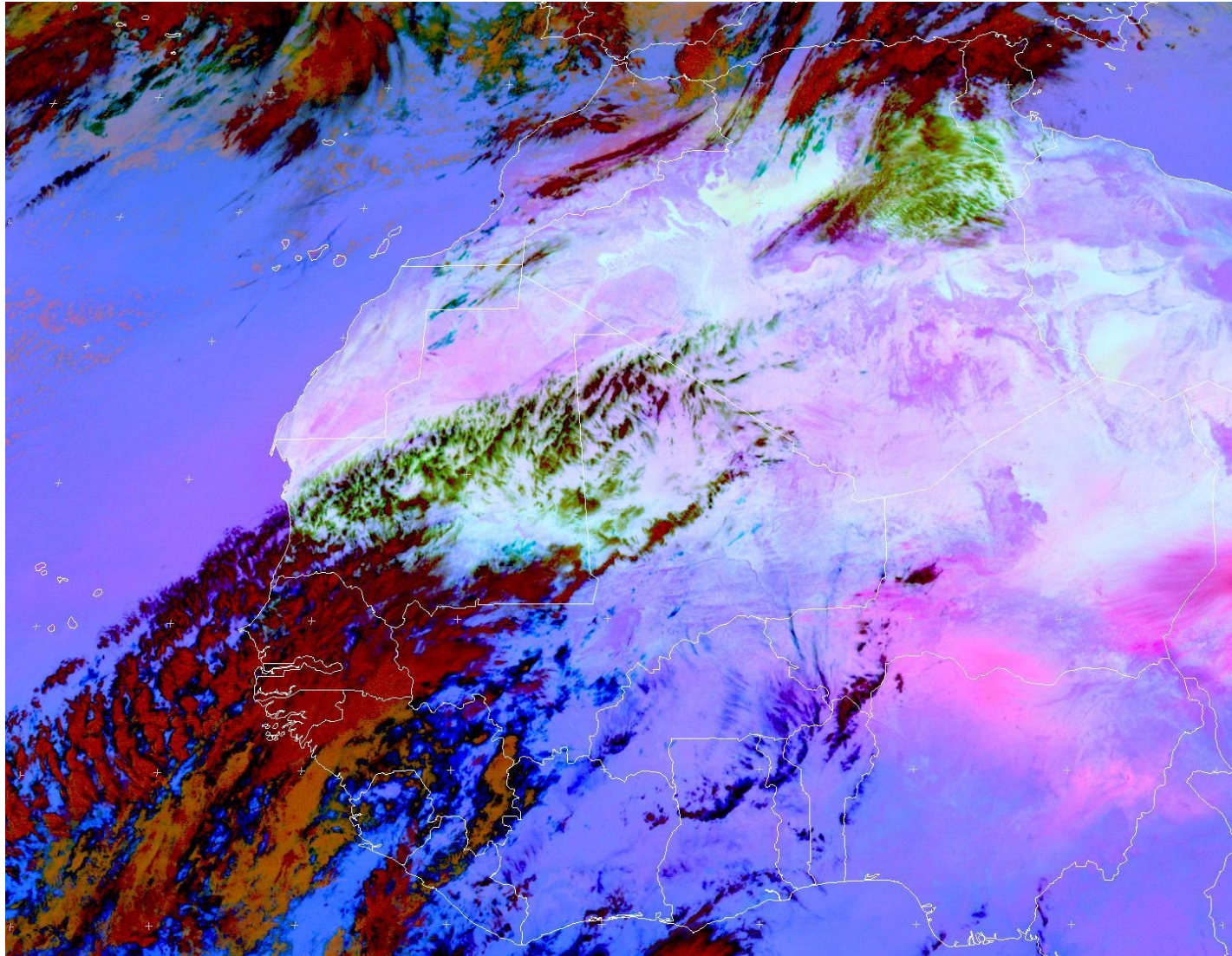


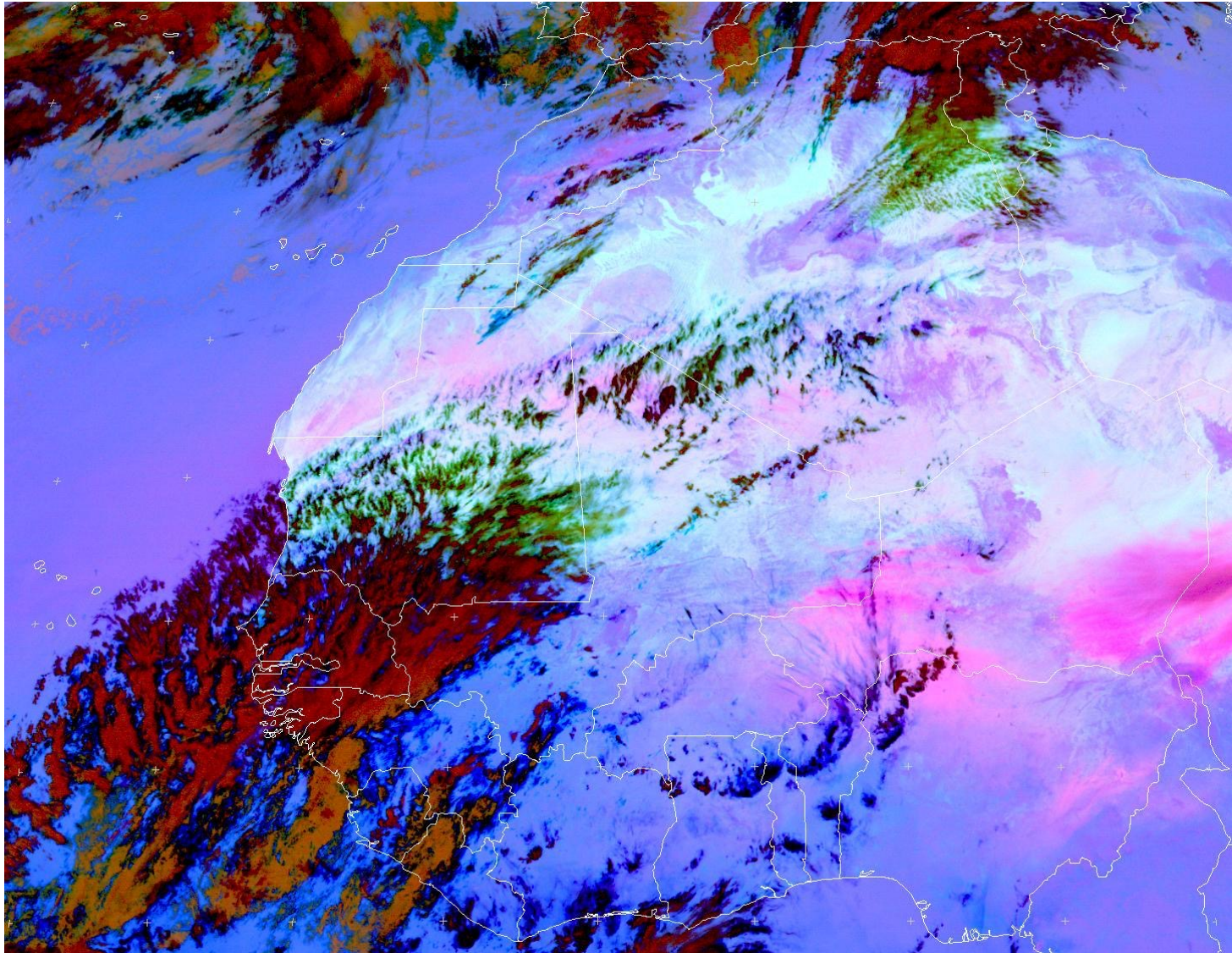
DUST FORECAST OVER PART OF WEST AFRICA

**EXAMPLE OF DUST EVENTS ON
JANUARY 09th 2010, OVER
WEST AFRICA**

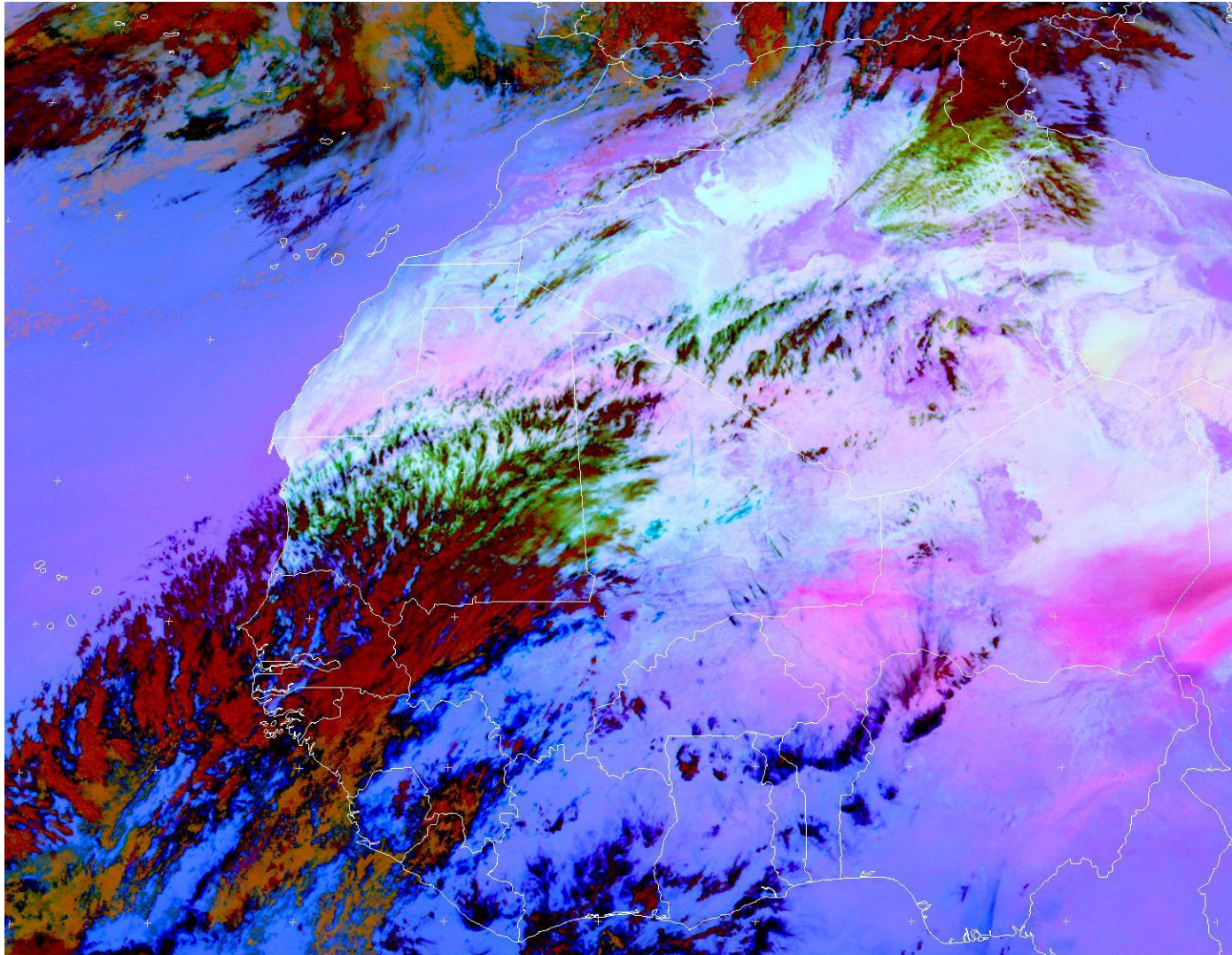
09 AM



01 PM



3 PM



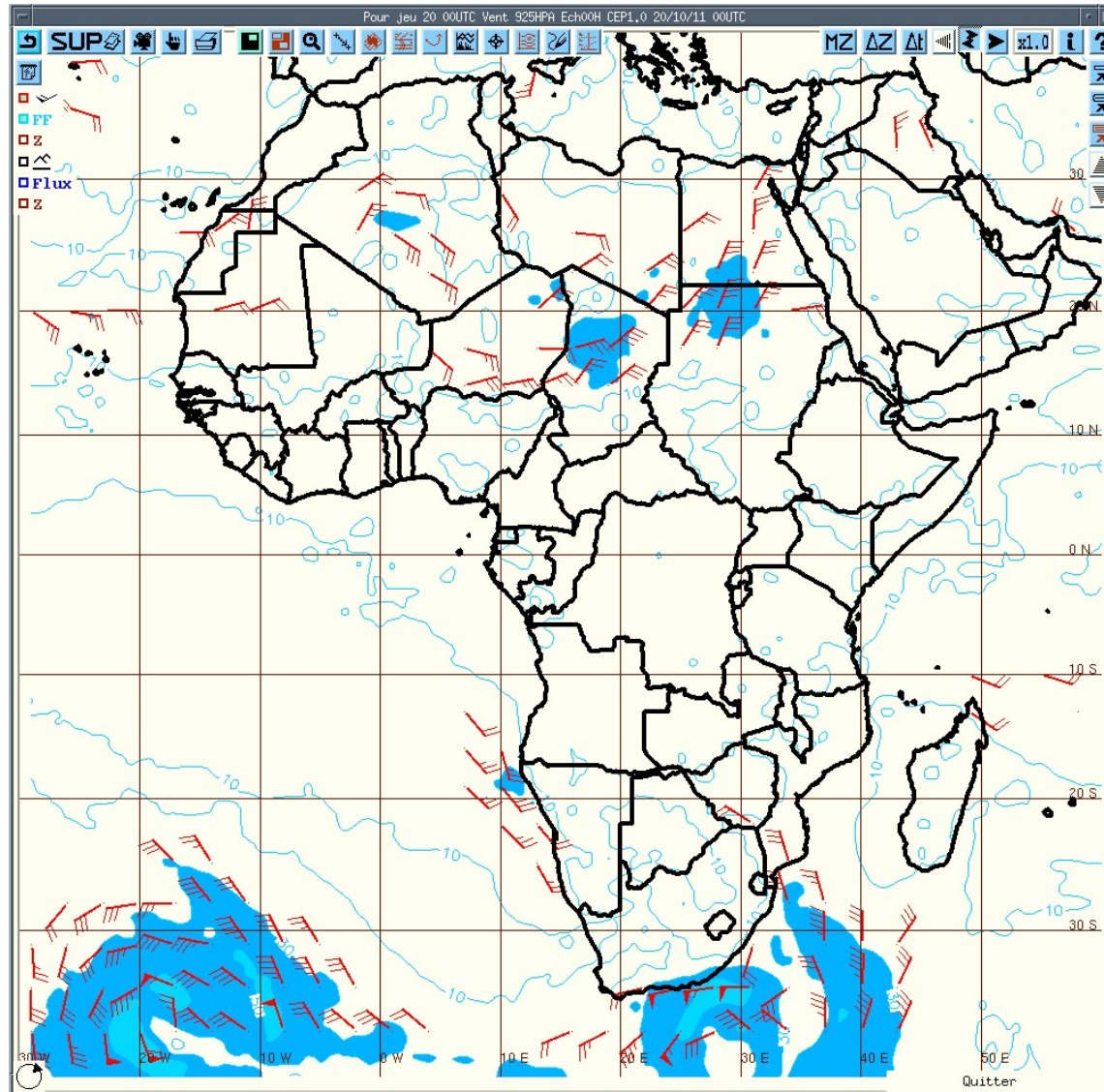
MET9 RGB-Dust 2011-01-09 15:00 UTC

EUMETSAT

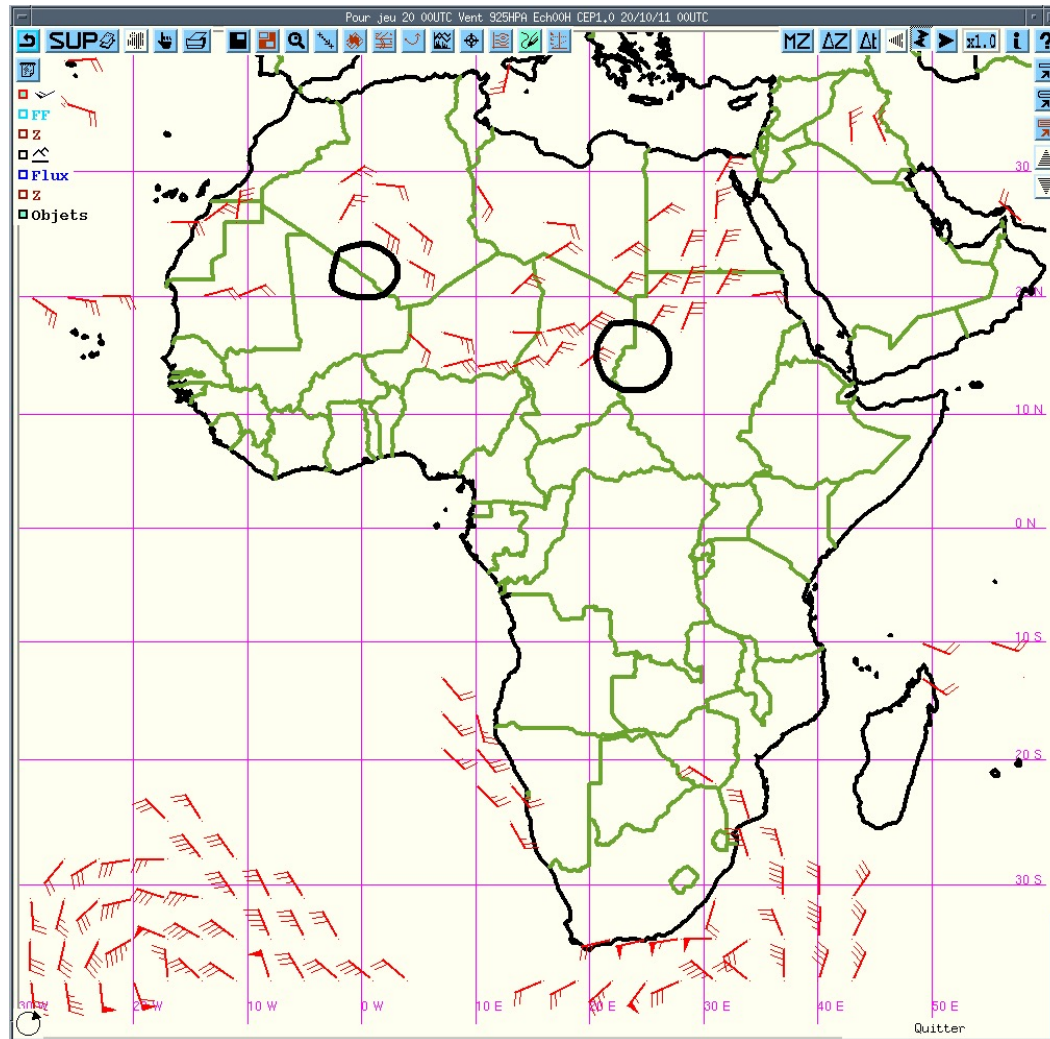
HOW TO MAKE THE FORECAST

- Based on satellite images
- Based on **ground** observations
- Wind at the level 925 hPa using a threshold of 20 kt superposed to the force.
- Wind direction at 700 hPa.

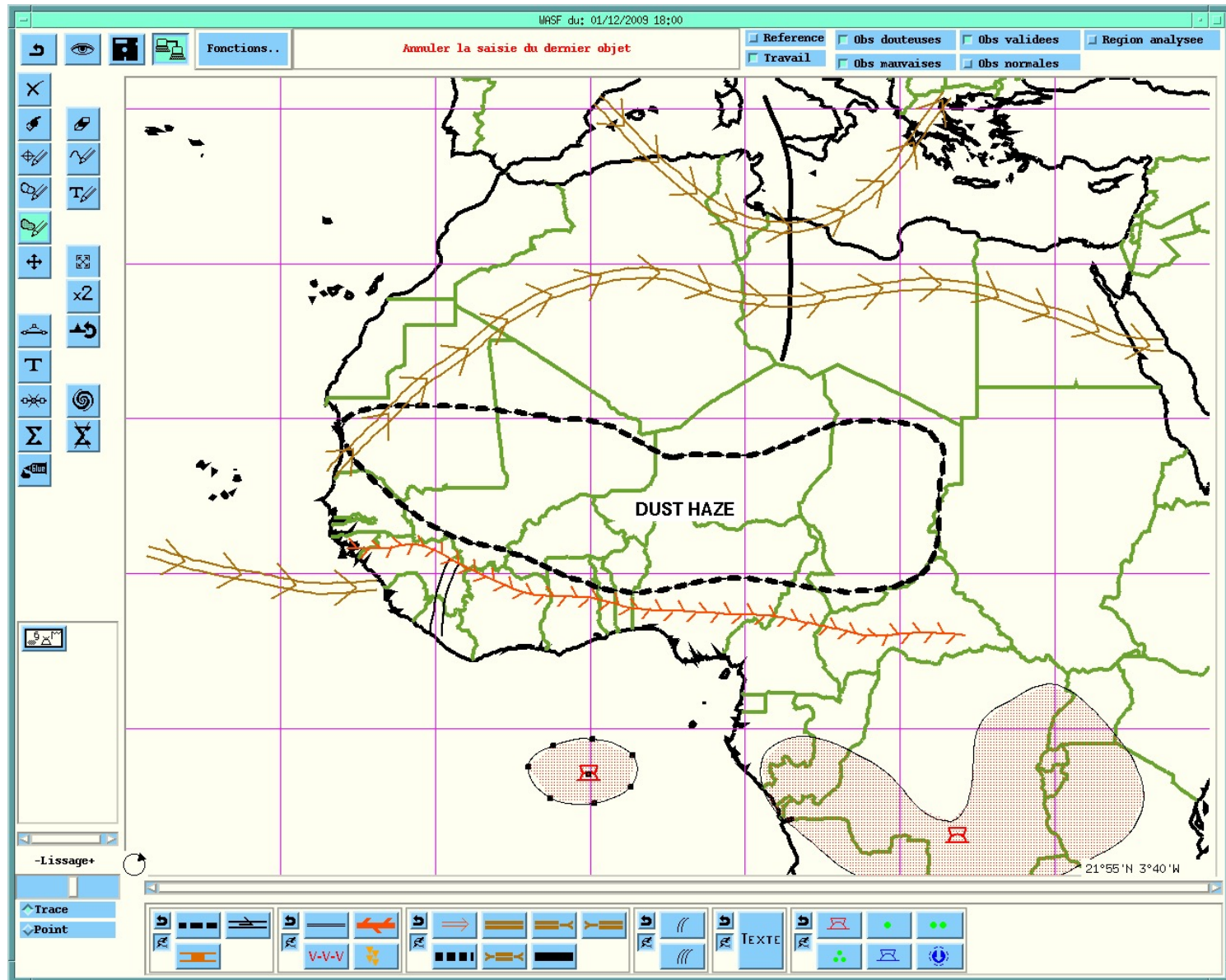
WIND DIRECTION AND FORCE



AREAS OF DUST GENERATION OVER WEST AFRICA



THE RESULTS OF THE FORECAST



THE USERS

The users are not clearly defined yet but at the met office we have a list of institutions or persons whom we send our daily forecast for different use.

THANK YOU