

[www.bsc.es](http://www.bsc.es)



**Barcelona  
Supercomputing  
Center**

*Centro Nacional de Supercomputación*

# Dust Forecast Services

WMO SDS-WAS and Barcelona Dust Forecast Center

Francesco Benincasa

Amman, 2nd of November 2015



**Barcelona  
Supercomputing  
Center**

*Centro Nacional de Supercomputación*

**OUTLINE**

## WMO SDS-WAS NA-ME-E Regional Center

- ▶ Web portal
- ▶ Howto use it
- ▶ Products and Services

## Barcelona Dust Forecast Center

- ▶ Web portal
- ▶ Products and Services



**Barcelona  
Supercomputing  
Center**  
*Centro Nacional de Supercomputación*

# WMO SDS-WAS NA-ME-E Regional Center

## Research and development

### ▶ Retrieving

- Data models
- Data observacions

### ▶ Producing

- Dust forecasts of 2 variables (Surface concentration and Aerosol optical depth) of 9 (10) numerical models + 4 multi-model products
- Models evaluation against observations
- Studies of dust episodes
- Workshop, training courses and seminars

<http://sds-was.aemet.es>

► *Browsable* images

– Forecast

You are here: Home > Forecast & Products > Dust forecasts > Compared dust forecasts

## Compared dust forecasts

by Francesco Benincasa — last modified Mar 06, 2015 02:57 PM

Date: 2015-10-29  H+ 

[Doc on model inter-comparison](#)

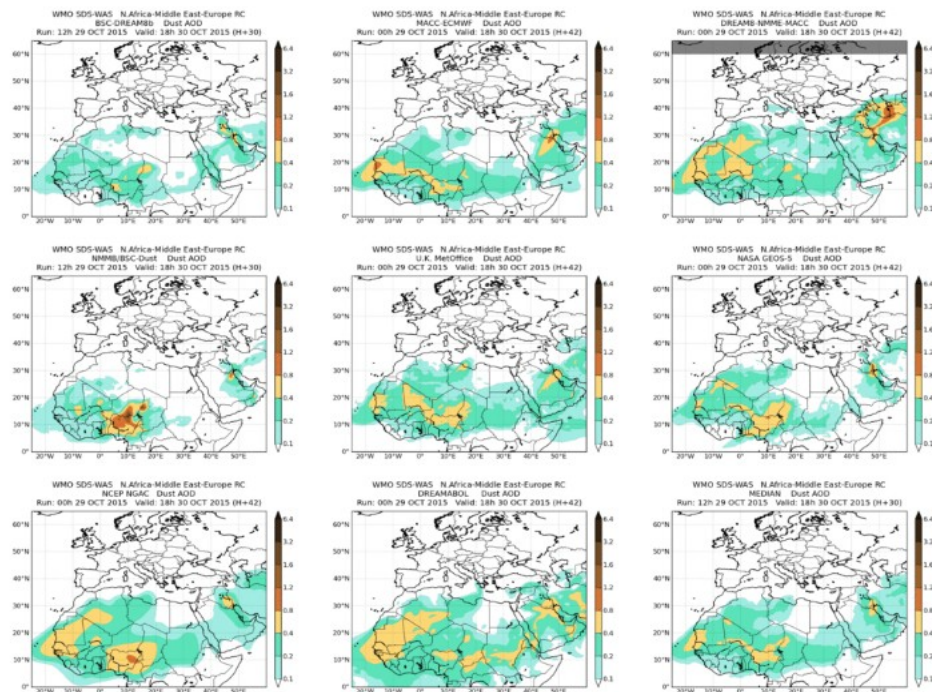
[Forecast evaluation](#)

[Multimodel Products](#)

*Please be sure to read the [data policy](#).*

*NOTE: Click on the images to enlarge.*

### Dust optical depth:



[Download full image](#)

<http://sds-was.aemet.es>

## ► *Browsable* images

- Forecast
- Observacions

You are here: [Home](#) > [Forecast & Products](#) > [Dust observations](#) > [In-situ measurements](#) > [Granadilla - Spain](#)

### Granadilla - Spain

by [Enric Terradellas](#) — last modified Aug 01, 2014 10:43 AM

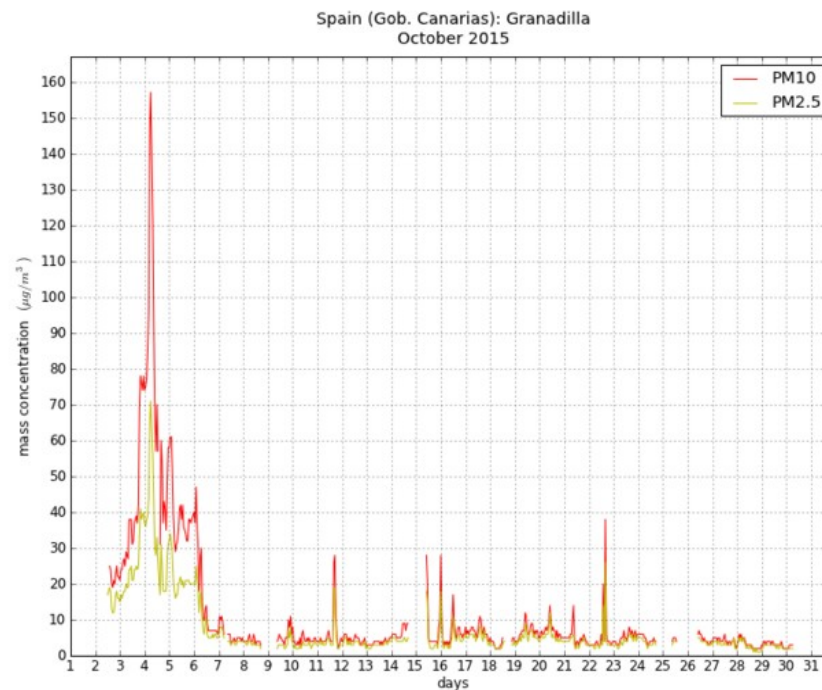
Select another station

Display previous graphs  

[<< Back to Station Selection](#)

[Check Backtrajectories >>](#)

NOTE: Click on the image to enlarge



[Download full image](#)

<http://sds-was.aemet.es>

## ► *Browsable* images

- Forecast
- Observacions
- Evaluation
  - AERONET

You are here: Home > Forecast & Products > Forecast evaluation > Santa\_Cruz\_Tenerife - Spain

## Santa\_Cruz\_Tenerife - Spain

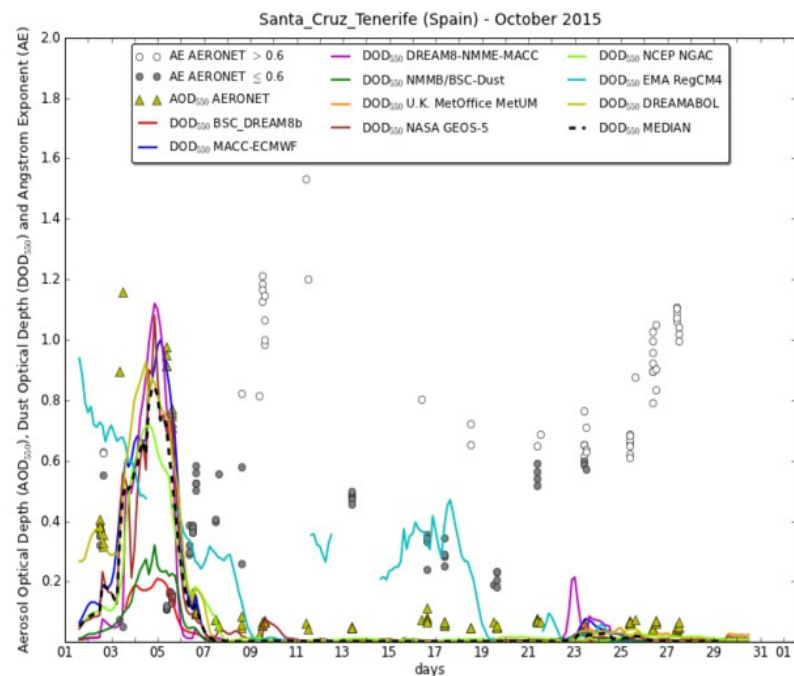
by Francesco Benincasa — last modified Jul 17, 2014 06:20 PM

Select another station

Date:

[<< Back to Station Selection](#)

NOTE: Click on the image to enlarge



[Download full image](#)



<http://sds-was.aemet.es>

## ► *Browsable* images

- Forecast
- Observacions
- Evaluation
  - AERONET
  - MODIS

You are here: Home > Forecast & Products > Forecast evaluation > Evaluation of Saharan Dust Transport onto the Atlantic

### Monthly Evaluation

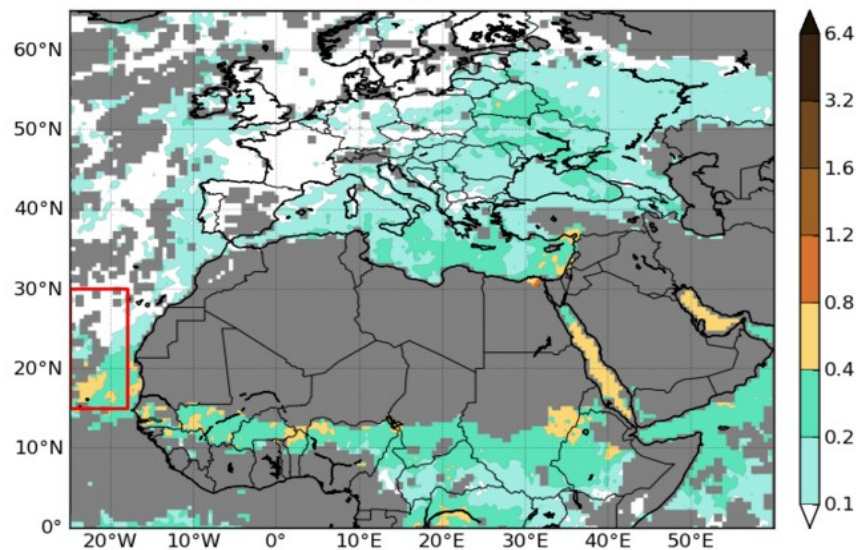
by Francesco Benincasa — last modified Dec 03, 2014 01:25 PM

Date:  

[Go to Seasonal evaluation](#)

Average values of the MODIS retrievals used in the evaluation. The plot has been generated from products between the 2nd of the stamped month and the 1st of the following one.

WMO SDS-WAS N.Africa-Middle East-Europe RC  
MODIS AOD<sub>550</sub> - SEP 2015



[Download full image](#)

	BIAS	ROOT MEAN SQUARE ERROR	CORRELATION COEFFICIENT	FRACTIONAL GROSS ERROR	NUMBER OF CASES
BSC_DREAM8b	-0.15	0.19	0.80	1.14	1239

# WMO SDS-WAS NA-ME-E Regional Center

<http://sds-was.aemet.es>

► Numerical evaluation scores archive

You are here: Home > Forecast & Products > Forecast evaluation > Model evaluation metrics

## Monthly scores

by Francesco Benincasa — last modified Nov 27, 2014 11:51 AM

Date:  

Sep 2015. Dust Optical Depth.  
Threshold Angstrom Exponent = 0.600

### BIAS

	BSC_ DREAM8b	MACC- ECMWF	DREAM8- NMME-MACC	NMMB/BSC- Dust	U.K. Met Office	NASA GEOS-5	NCEP NGAC	EMA RegCM4	DREAM ABOL	MEDIAN
<b>Sahel/Sahara</b> show stations	-0.28	-0.16	-0.12	-0.32	N/A	-0.20	-0.09	-0.05	0.02	-0.17
<b>Middle East</b> show stations	-0.28	-0.24	-0.22	-0.46	N/A	-0.27	-0.36	-0.23	0.02	-0.27
<b>Mediterranean</b> show stations	-0.31	-0.24	-0.23	-0.36	N/A	-0.25	-0.22	-0.20	-0.16	-0.26
<b>TOTAL</b>	-0.30	-0.20	-0.18	-0.35	N/A	-0.23	-0.17	-0.13	-0.06	-0.22

### ROOT MEAN SQUARE ERROR

	BSC_ DREAM8b	MACC- ECMWF	DREAM8- NMME-MACC	NMMB/BSC- Dust	U.K. Met Office	NASA GEOS-5	NCEP NGAC	EMA RegCM4	DREAM ABOL	MEDIAN
<b>Sahel/Sahara</b> hide stations	0.48	0.42	0.41	0.50	N/A	0.43	0.40	0.49	0.42	0.42
Capo_Verde	0.27	0.12	0.17	0.31	N/A	0.19	0.16	0.30	0.17	0.16
Dakar	0.60	0.48	0.44	0.65	N/A	0.51	0.43	0.51	0.43	0.48
IER_Cinzana	N/A	N/A	N/A	N/A	N/A	N/A	N/A	N/A	N/A	N/A
Banizoumbou	0.67	0.60	0.56	0.68	N/A	0.60	0.56	0.59	0.54	0.58
Zinder_Airport	0.23	0.19	0.14	0.26	N/A	0.21	0.15	0.34	0.28	0.17
Santa_Cruz_ Tenerife	0.10	0.12	0.13	0.14	N/A	0.10	0.10	0.25	0.17	0.11
Zouerate- Fennec	N/A	N/A	N/A	N/A	N/A	N/A	N/A	N/A	N/A	N/A
Tamanrasset_ INM	0.35	0.20	0.24	0.37	N/A	0.25	0.23	0.34	0.37	0.22

# WMO SDS-WAS NA-ME-E Regional Center

⌋ <http://sds-was.aemet.es>

▶ Numerical evaluation scores archive

▶ Numerical data archive

## Files Download

by Francesco Benincasa — last modified Jan 16, 2015 01:31 PM — [History](#)

This page allows downloading numerical dust forecasts issued by different dust prediction models. Dust models may have very different characteristics (global or regional, horizontal and vertical resolutions, dust emission and deposition parameterizations, presence or absence of data assimilation, feedback to the meteorological model, ...). Information on the characteristics and configurations of the models can be found on their respective websites.

*Please be sure to read the [data policy](#).*

Models currently available are:

<b>BSC-DREAM8b v2.0</b>	<a href="#">DOWNLOAD FILES</a>	<a href="#">Model website</a>	 <b>Barcelona Supercomputing Center</b> Centro Nacional de Supercomputación
<b>MACC-ECMWF</b>	<a href="#">DOWNLOAD FILES</a>	<a href="#">Model website</a>	 <b>mac</b> Monitoring atmospheric composition & climate
<b>DREAM-NMME-MACC</b>	<a href="#">DOWNLOAD FILES</a>	<a href="#">Model website</a>	 <b>SEEVCCC</b>
<b>NMMB/BSC-Dust</b>	<a href="#">DOWNLOAD FILES</a>	<a href="#">Model website</a>	 <b>Barcelona Supercomputing Center</b> Centro Nacional de Supercomputación
<b>NASA-GEOS-5</b>	<a href="#">DOWNLOAD FILES</a>	<a href="#">Model website</a>	
<b>NCEP-NGAC</b>	<a href="#">DOWNLOAD FILES</a>	<a href="#">Model website</a>	 <b>NCEP</b> NATIONAL CENTERS FOR ENVIRONMENTAL PREDICTION
<b>DREAMABOL</b>	<a href="#">DOWNLOAD FILES</a>	<a href="#">Model website</a>	 <b>ISAC</b>
<b>EMA-RegCM4</b>	<a href="#">DOWNLOAD FILES</a>	<a href="#">Model website</a>	 <b>EGYPTIAN METEOROLOGICAL AUTHORITY</b>
<b>Multimodel MEDIAN</b>	<a href="#">DOWNLOAD FILES</a>	<a href="#">Model website</a>	 

## ☾ Main products

- ▶ Dust forecast ensemble
- ▶ Visibility
- ▶ Eumetsat RGB products archive

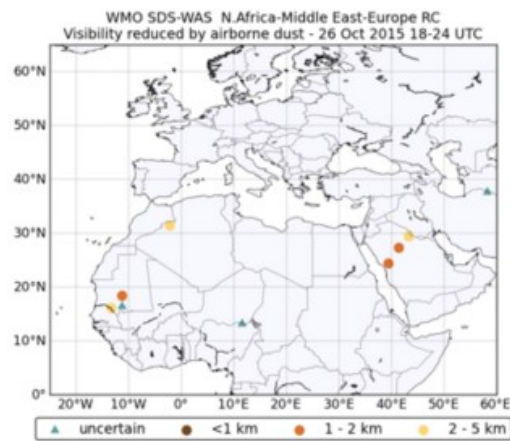
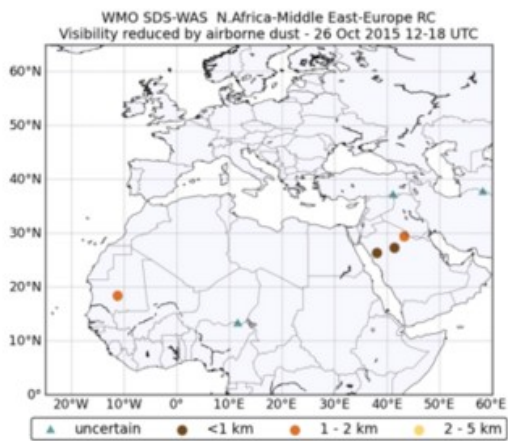
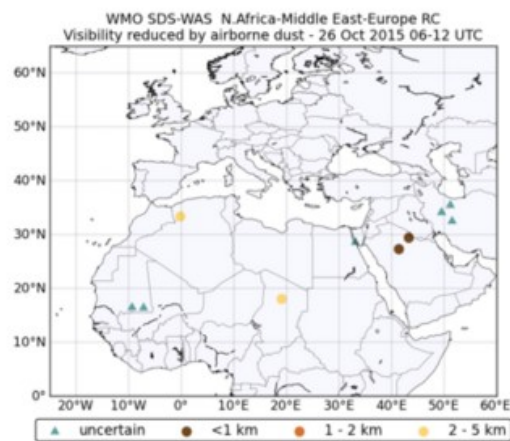
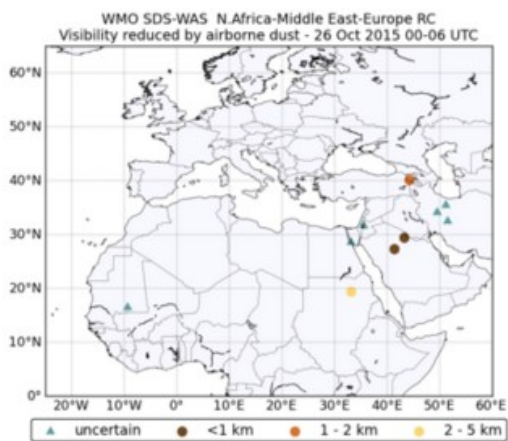
# WMO SDS-WAS NA-ME-E Regional Center

You are here: Home > Forecast & Products > Dust observations > Visibility

## Visibility

by Francesco Benincasa — last modified Oct 28, 2015 09:32 AM

Date 2015-10-26 



[Download full image](#)

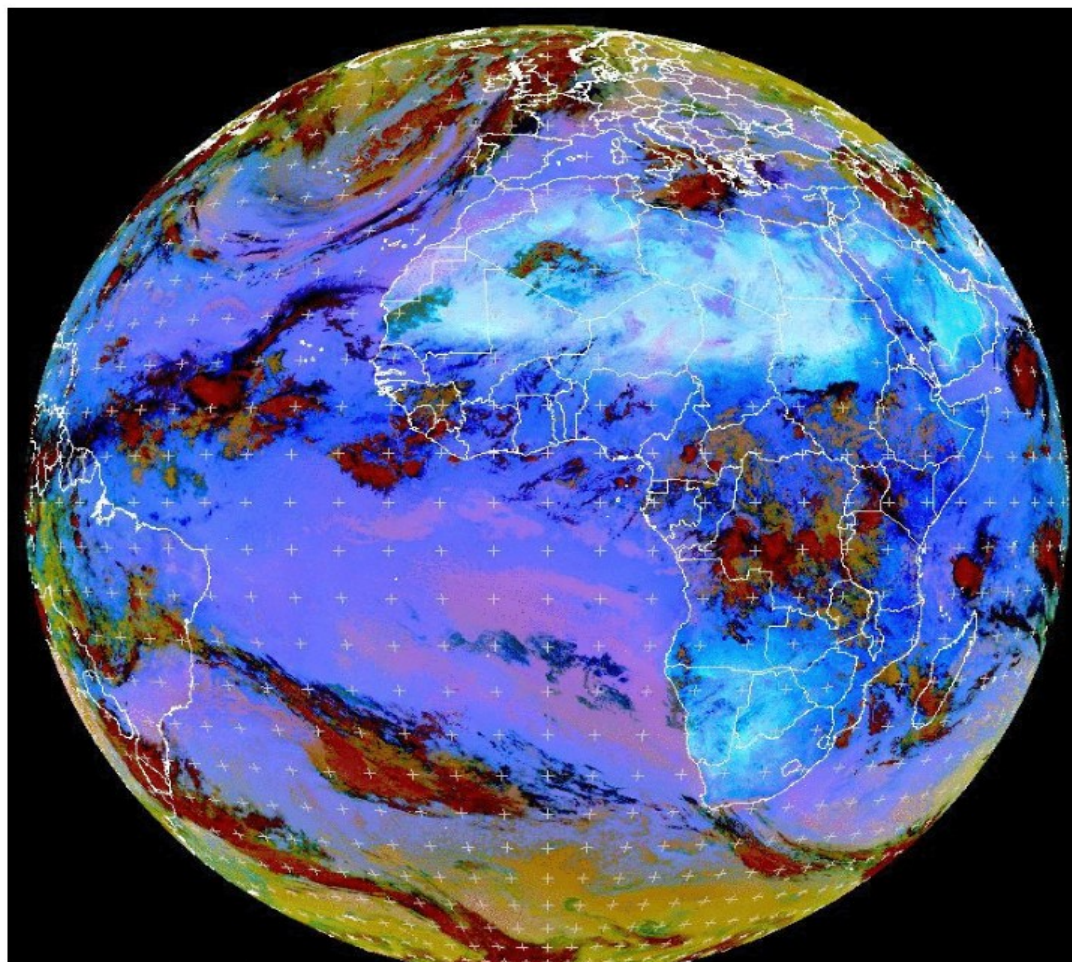
# WMO SDS-WAS NA-ME-E Regional Center

You are here: Home > Forecast & Products > Dust observations > MSG – EUMETSAT

## MSG – EUMETSAT

by Francesco Benincasa — last modified May 29, 2012 03:26 PM

Date: 2015-10-30  anim 



MSG10 RGB-Dust 2015-10-30 09:00 UTC

[Download full image](#)

## ☾ Main services

- ▶ Dust News & Events
- ▶ Newsletters
- ▶ Materials

## Materials



### Materials

- > [Training](#)
- > [Workshops](#)
- > [Dust Events](#)
- > [Scientific Documentation](#)
- > [Technical Reports](#)
- > [Meningitis](#)
- > [ACMAD bulletins](#)

### Search

You are here: [Home](#) > [Materials](#)

## Materials

by [Eric Terradellas](#) — last modified Oct 29, 2015 11:54 AM

This section includes different materials related to mineral dust:

- [training materials](#)
- [workshops](#)
- [information on several dust events](#)
- [scientific documentation](#)
- [technical reports](#)
- [information on dust impacts \(meningitis\)](#).
- [information relative to different events carried out in the framework of the WMO SDS-WAS \(meetings, training courses\)](#)..
- [Print this](#)





## Meningitis

HOME	ABOUT US	FORECAST & PRODUCTS	PROJECTS & RESEARCH	MATERIALS	NEWS	EVENTS	CONTACT US
------	----------	---------------------	---------------------	-----------	------	--------	------------

### Materials

- > Training
- > Workshops
- > Dust Events
- > Scientific Documentation
- > Technical Reports
- > **Meningitis**
- > ACMAD bulletins

### Search

Search Site

### Latest News

[Equipment calibration and staff training at Izana Atmospheric Research Center](#)

Oct 29, 2015

[The edge of crisis: Dust and sand storms](#)

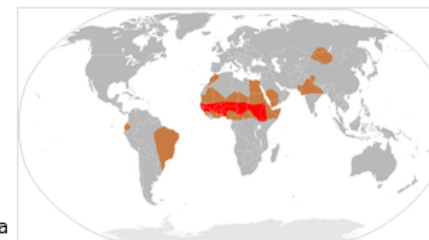
Oct 29, 2015

You are here: [Home](#) > [Materials](#) > [Meningitis](#)

## Meningitis

by [Enric Terradellas](#) — last modified May 21, 2014 02:34 PM

- [Climate & Health Bulletin: Meningitis Vigilance Zones](#)
- [WHO Meningitis Weekly Bulletin](#)
- [Meningitis Vaccine Project](#)
- [Meningitis Environmental Risk Information Technologies \(MERIT\)](#)



[Meningococcal meningitis](#) is a bacterial form of meningitis, a serious infection of the meninges that affects the brain membrane. It commonly causes epidemics with high fatality rates. The largest epidemics occur in the arid areas of sub-Saharan Africa: the so-called African meningitis belt, which stretches from Senegal to Ethiopia. They occur in seasonal cycles between end of November and end of June, depending on the location, and decline rapidly with the arrival of the rainy season. The yearly average incidence is about 40,000-50,000 cases with a 10% of deaths and a 10-20% of affected by permanent neurological sequelae.

It is believed that low absolute humidity and presence of dust may enhance meningococcal invasion, either by damaging the mucosal barrier and allowing bacterial penetration, or by inhibiting mucosal immune defences. A controversial hypothesis suggests that dust particles might serve as bacterial carriers, thus facilitating the transmission.

- Cuevas, E., C. Pérez, J.M. Baldasano, C. Camino, S. Alonso-Pérez and S. Basart (2011): [Long-term retrospective analysis of dust and AI with meningitis epidemics data](#), MACC O-INT WP3. (Meningitis linked to mineral dust transport in the Sahel). 2nd. delivery report.



**Barcelona  
Supercomputing  
Center**

*Centro Nacional de Supercomputación*

# Barcelona Dust Forecast Center

## « Operational center

- ▶ Operated by BSC and AEMET
- ▶ Officially recognized by the WMO
- ▶ 72 hours forecast (3-hourly) model developed at BSC
- ▶ 6 variables (Optical depth, Dry and Wet deposition, Load, Surface concentration, Surface extinction)

☞ <http://dust.aemet.es>

## ☞ Products

- ▶ Forecast images
- ▶ Google Earth integration (KML/KMZ files)
- ▶ Averaged values images
- ▶ Zoomed area forecast images (Spain, Burkina Faso, ...)

# Barcelona Dust Forecast Center

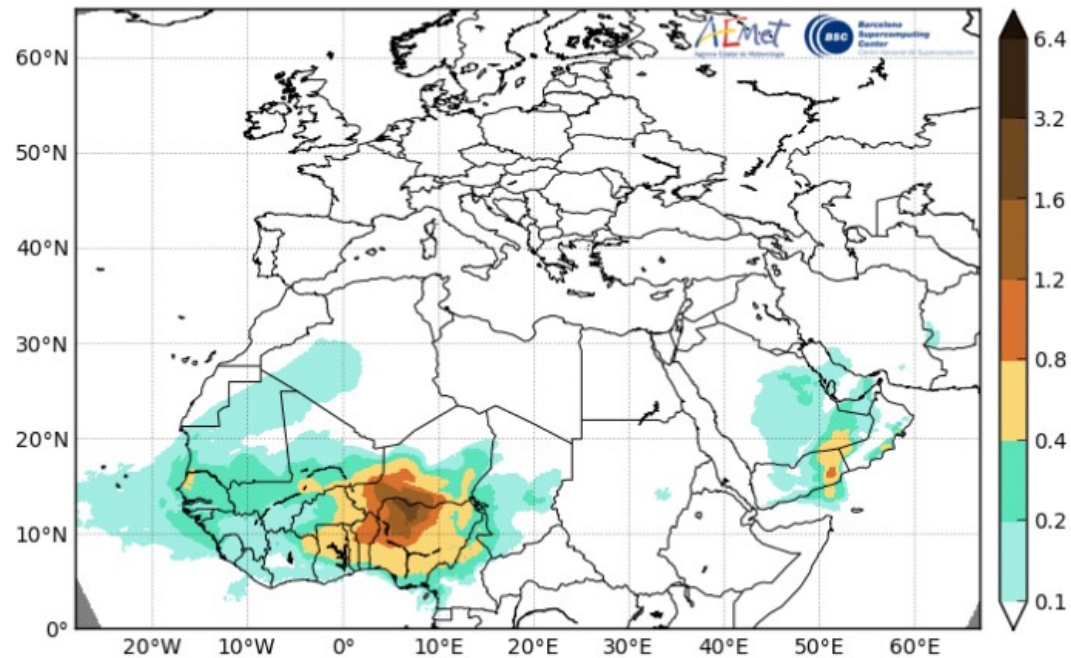
You are here: Home / Forecast

## Dust Optical Depth

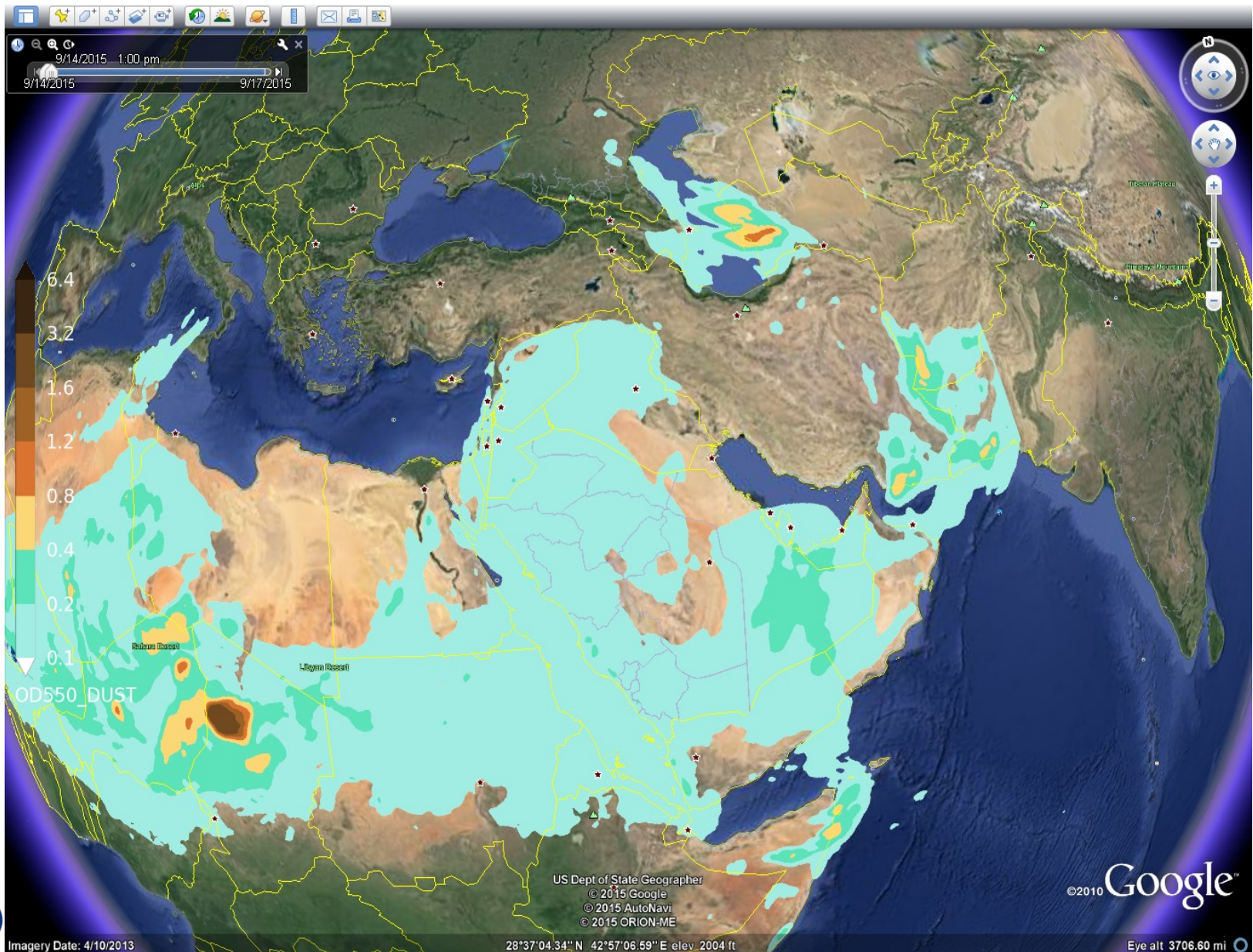
Date   H+  Variable

The NMMB/BSC-Dust model

Barcelona Dust Forecast Center - <http://dust.aemet.es/>  
NMMB/BSC-Dust Res:0.1°x0.1° Dust AOD  
Run: 12h 29 OCT 2015 Valid: 06h 01 NOV 2015 (H+66)



# Barcelona Dust Forecast Center



# Barcelona Dust Forecast Center

You are here: [Home](#) / [Other products](#) / [Averaged values](#)

## Monthly averaged values

Monthly averaged values of dust surface concentration and dust load computed from the daily runs of the NMMB/BSC-Dust model.

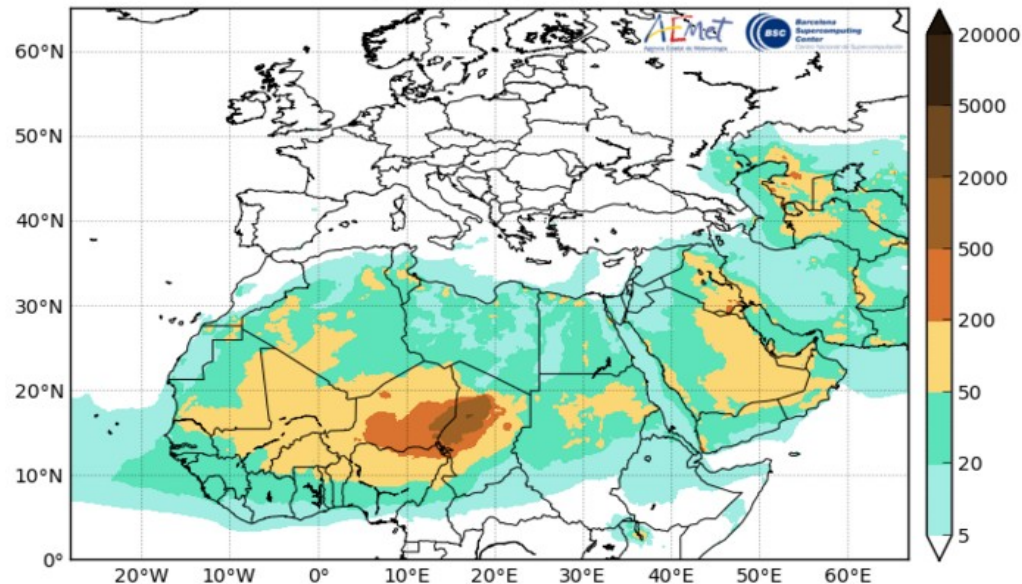
Date  

[Methods: Time-averaged values](#)

NOTE: [Click on the images to enlarge](#)

## Monthly Averaged Dust Surface Concentration ( $\mu\text{m}^3$ )

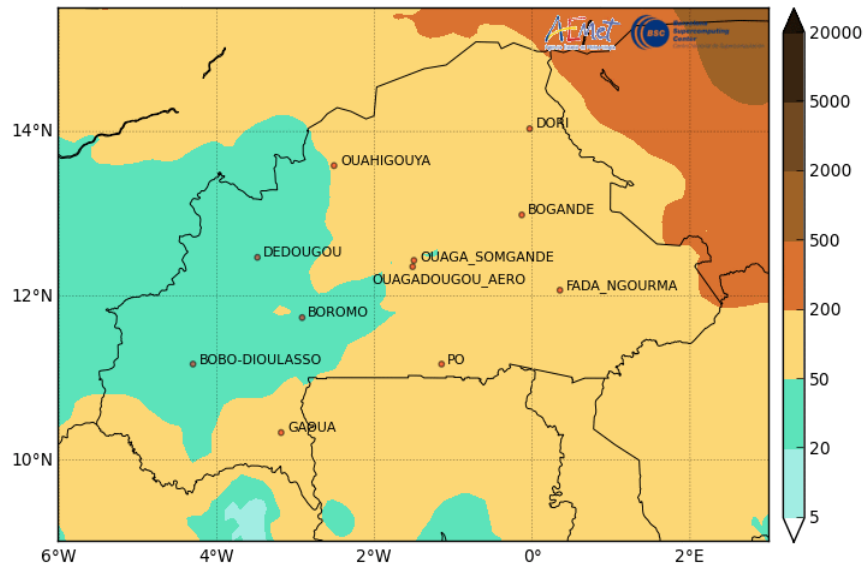
Barcelona Dust Forecast Center - <http://dust.aemet.es/>  
NMMB/BSC-Dust Res:  $0.1^\circ \times 0.1^\circ$  Dust Surface Conc. ( $\mu\text{g}/\text{m}^3$ )  
Average: OCT 2015



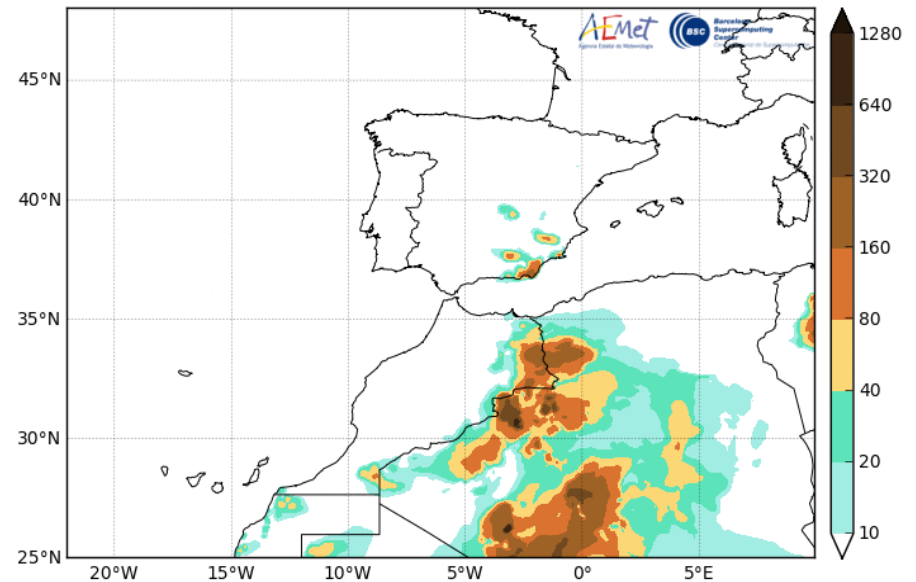
[Download Image](#)

# Barcelona Dust Forecast Center

Barcelona Dust Forecast Center - <http://dust.aemet.es/>  
NMMB/BSC-Dust Res:0.1°x0.1° Dust Surface Conc. ( $\mu\text{g}/\text{m}^3$ )  
Run: 12h 29 OCT 2015 Valid: 12h 01 NOV 2015 (H+72)



Barcelona Dust Forecast Center - <http://dust.aemet.es/>  
NMMB/BSC-Dust Res:0.1°x0.1° Dust Surface Conc. ( $\mu\text{g}/\text{m}^3$ )  
Run: 12h 29 OCT 2015 Valid: 12h 01 NOV 2015 (H+72)



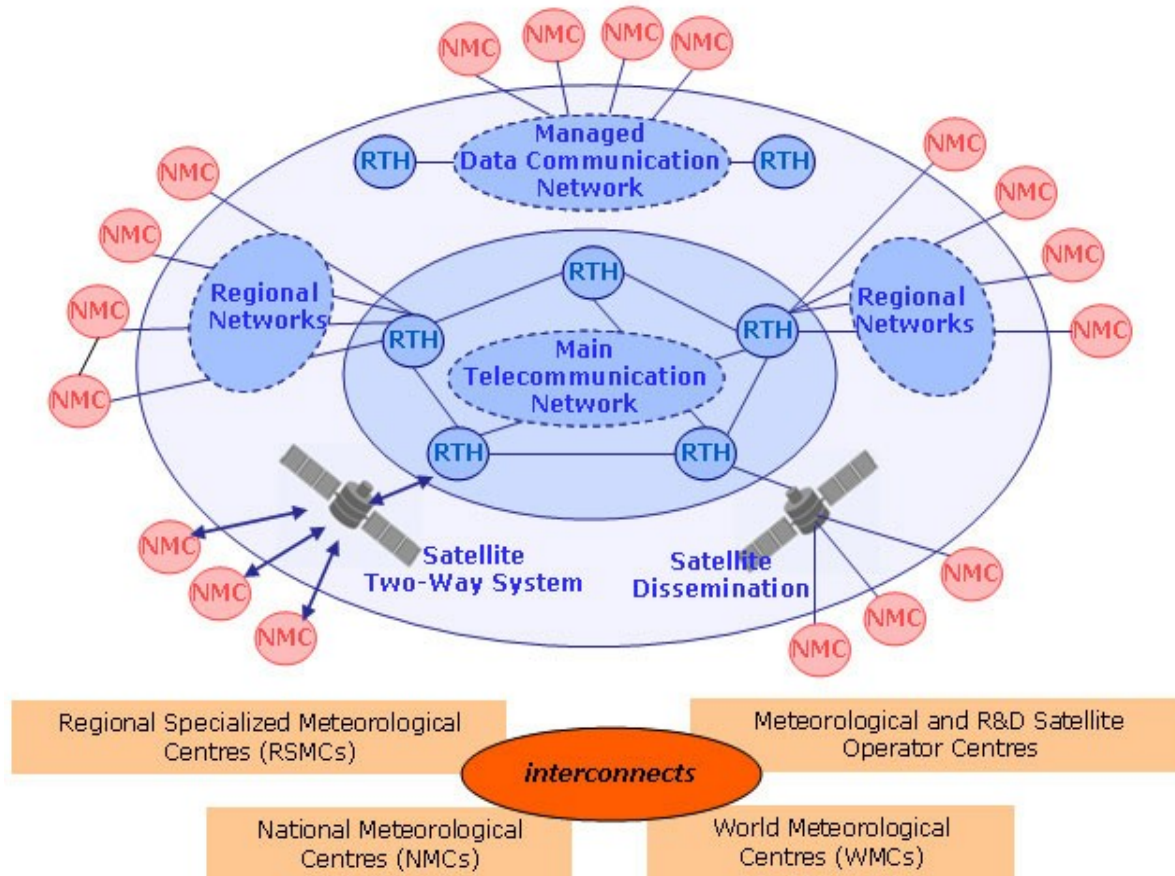


## « Services

- ▶ Forecast images dissemination
  - ▶ WMO GTS (Global Telecommunication System)
  - ▶ EUMETCast (EUMETSAT's primary dissemination mechanism)
  
- ▶ News & Events, Newsletter

# Barcelona Dust Forecast Center

## WMO GTS

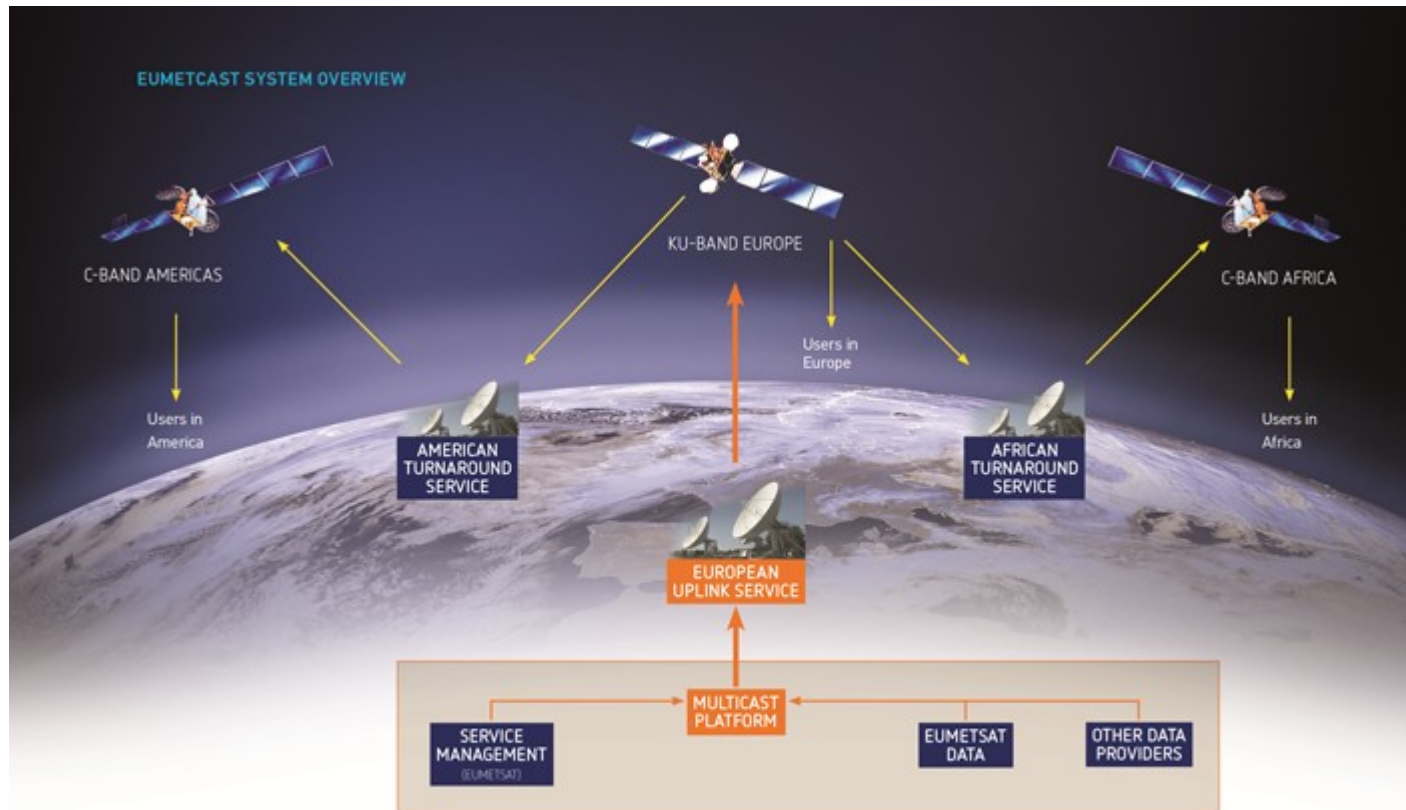


## WMO GTS

- ▶ Global network for transmission of meteorological data
- ▶ Data proceeding from weather stations, satellites and NWP centres
- ▶ Implemented and operated by
  - National meteorological services
  - Other international organizations (ECMWF, EUMETSAT, ...)

# Barcelona Dust Forecast Center

## EUMETCast



## ☞ EUMETCast

- ▶ Multi-service dissemination system based on standard Digital Video Broadcast (DVB) technology
- ▶ It uses commercial telecommunication geostationary satellites
- ▶ Multi-cast files (data and products) to a wide user community
- ▶ From 15th of October 2015 **BDFC** products are distributed over Europe and Africa



**Barcelona  
Supercomputing  
Center**

*Centro Nacional de Supercomputación*

**Thank you!**

For further information please contact  
[francesco.benincasa@bsc.es](mailto:francesco.benincasa@bsc.es)

[dust@aemet.es](mailto:dust@aemet.es)

[sdswas@aemet.es](mailto:sdswas@aemet.es)